

RECORD OF SURVEY

SURVEY OF PORTIONS OF SECTIONS 25, 26, 27, 28, 29, 32 AND 33, T.2 S., R.6 W., AND PORTIONS OF SECTIONS 29 AND 30, T.2 S., R.5 W., S.B.B. & M. IN RIVERSIDE COUNTY, CALIFORNIA.

OWNER: SANTA ANA RIVER DEVELOPMENT COMPANY.

Surveys Completed December 1948.

SCALE: 1" = 400'

FILED

APR 28 1949

Jack F. Ross

Deputy

Fee \$1.00

Filed 10:55 A.M.

I, W.W. Hoy, hereby certify that I am a Registered Civil Engineer, No. 70, of the State of California, and that this map consisting of four sheets correctly represents a survey made under my supervision at the request of the owner; that all monuments shown here on actually exist and their positions are correctly shown.

W.W. Hoy
Registered Civil Engineer No. 70

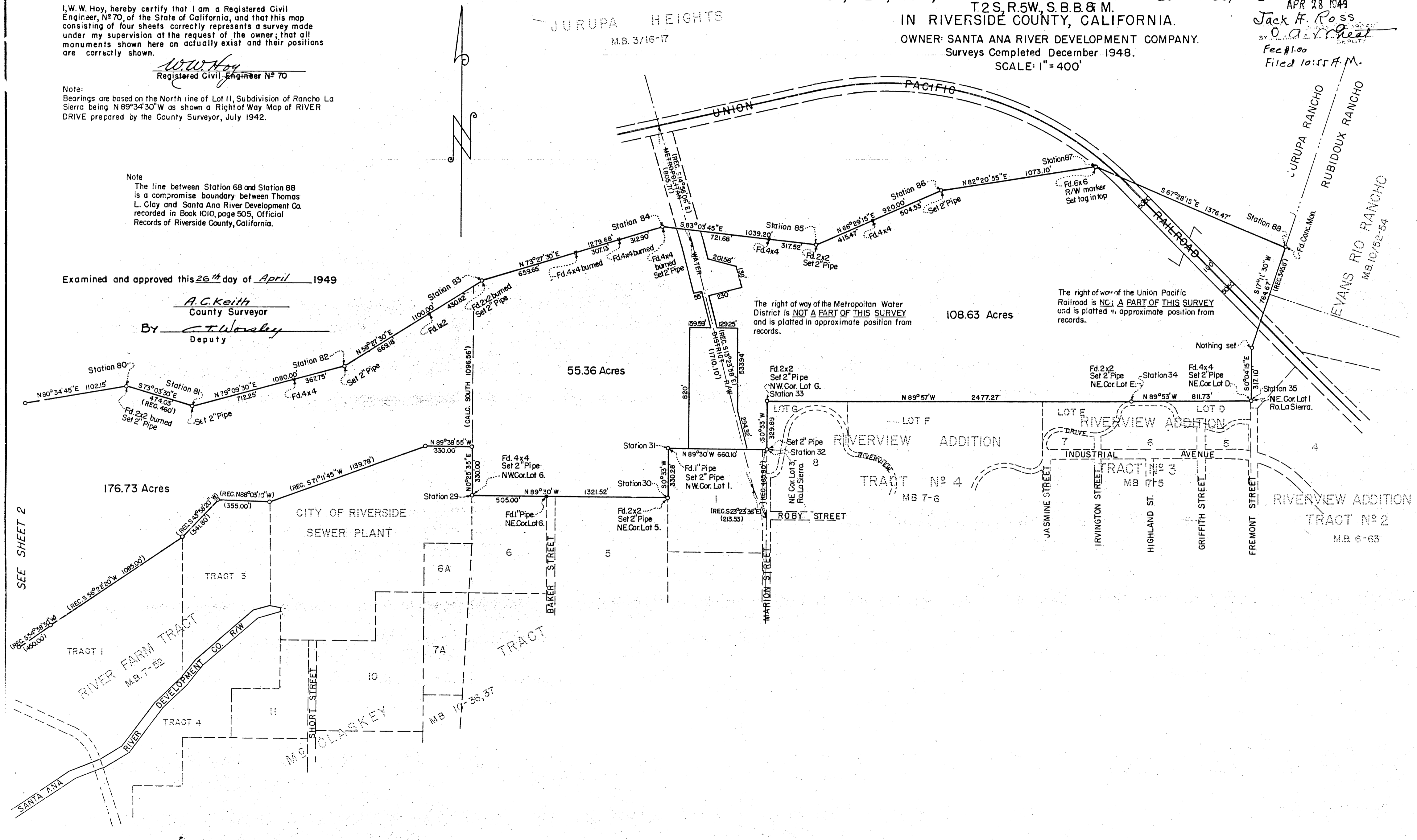
Note: Bearings are based on the North line of Lot II, Subdivision of Rancho La Sierra being N 89° 34' 30" W as shown a Right of Way Map of RIVER DRIVE prepared by the County Surveyor, July 1942.

Note: The line between Station 68 and Station 88 is a compromise boundary between Thomas L. Clay and Santa Ana River Development Co. recorded in Book 1010, page 505, Official Records of Riverside County, California.

Examined and approved this 26th day of April 1949

A.C. Keith
County Surveyor

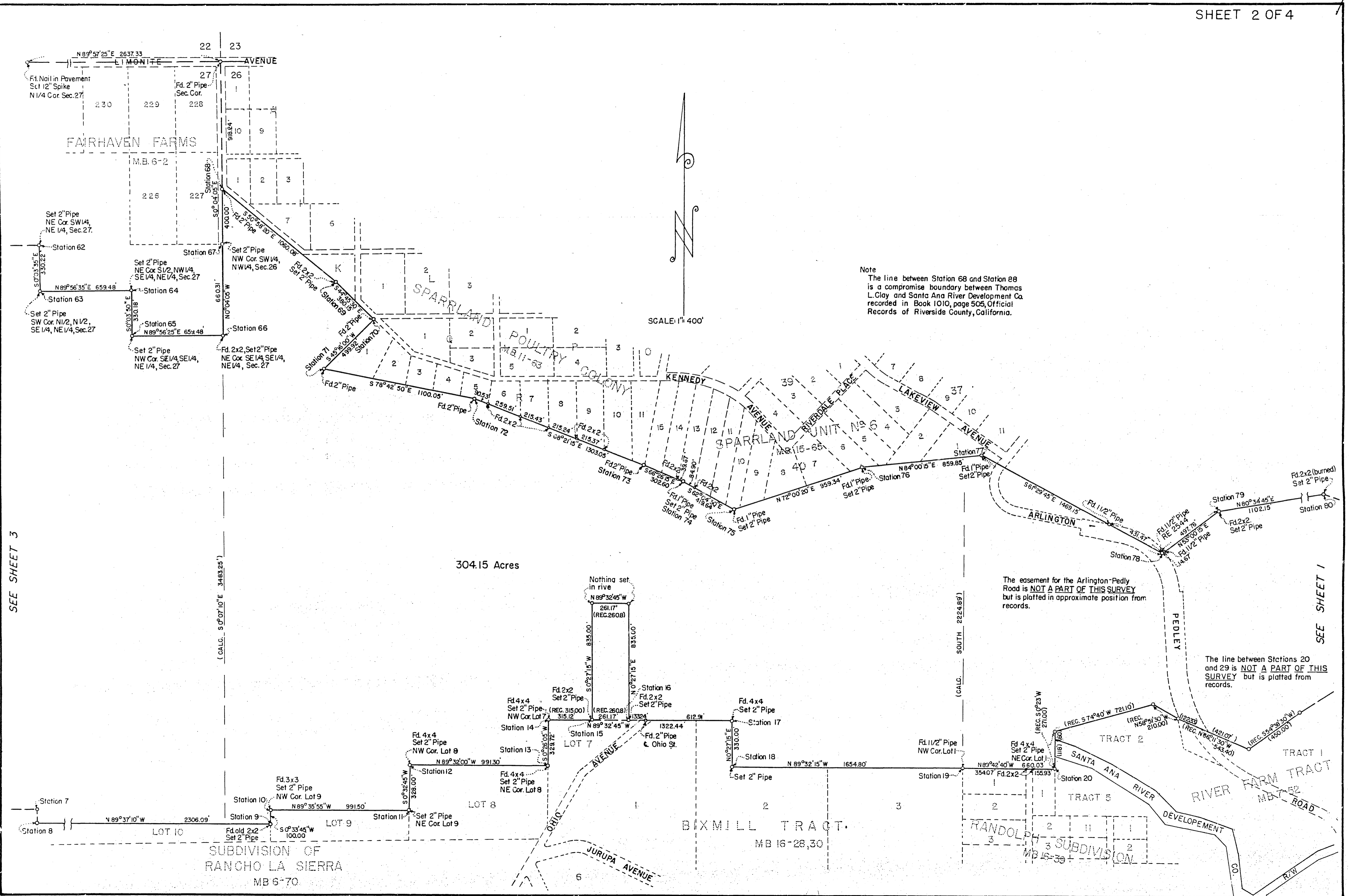
By C.T. Worsley
Deputy



16/52

R/S 16/52

16/53
R/S 16/53



Note
 The line between Station 68 and Station 88
 is a compromise boundary between Thomas
 L. Clay and Santa Ana River Development Co.
 recorded in Book 1010, page 506, Official
 Records of Riverside County, California.

SCALE: 1" = 400'

304.15 Acres

The easement for the Arlington-Pedley
 Road is NOT A PART OF THIS SURVEY
 but is platted in approximate position from
 records.

The line between Stations 20
 and 29 is NOT A PART OF THIS
 SURVEY but is platted from
 records.

SEE SHEET 3

SEE SHEET 1

SUBDIVISION OF
 RANCHO LA SIERRA
 MB 5-70

BIXMILL TRACT
 MB 16-28,30

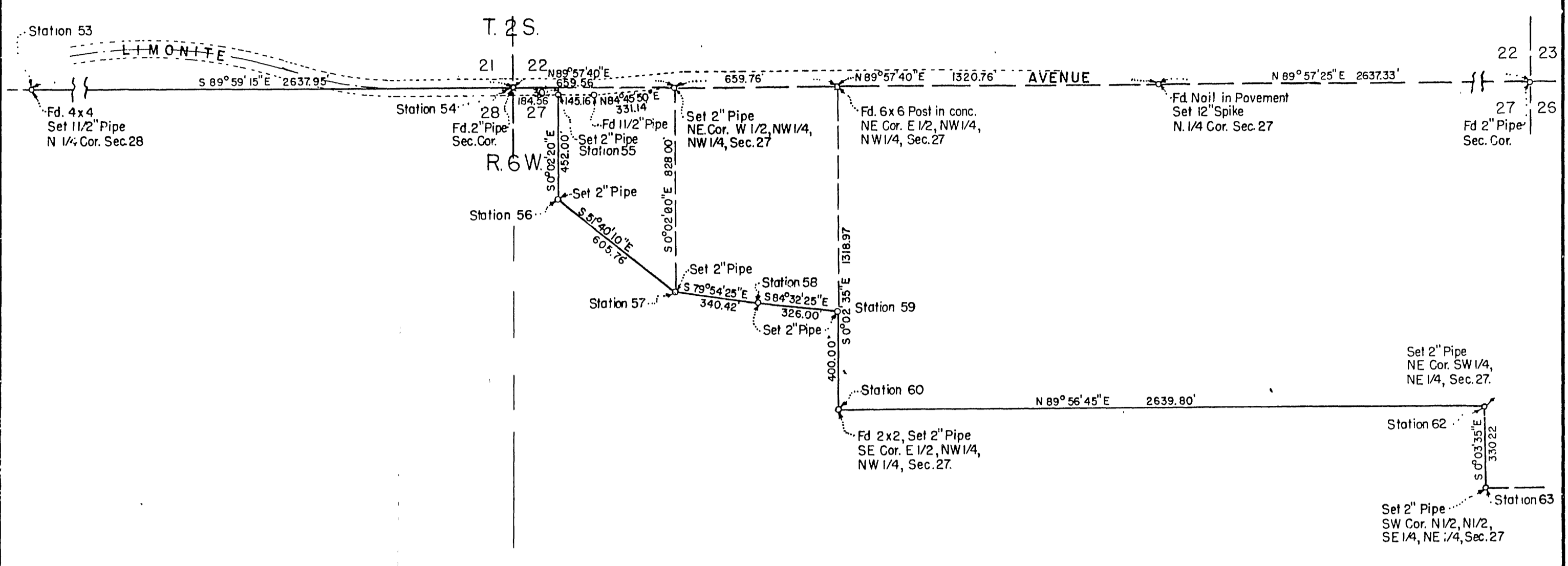
RANDOLPH
 SUBDIVISION
 MB 15-30

TRACT 2
 TRACT 5
 TRACT 1
 RIVER FARM TRACT
 MB 7-52

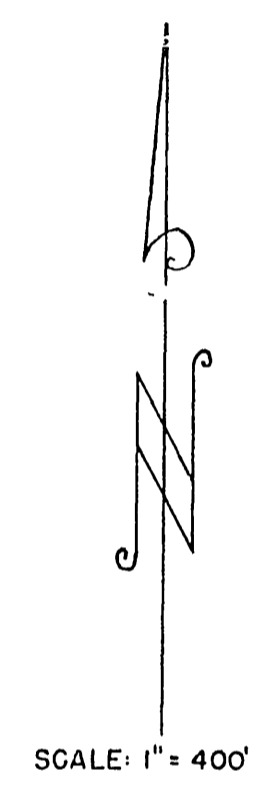
SEE SHEET 3

SEE SHEET 1

16/54
P/S 16/54

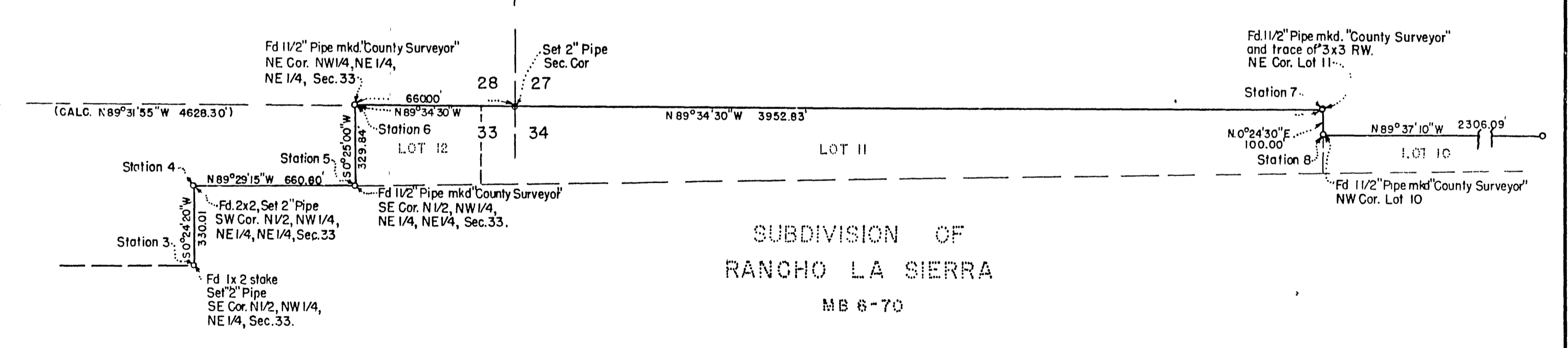


495.81 Acres



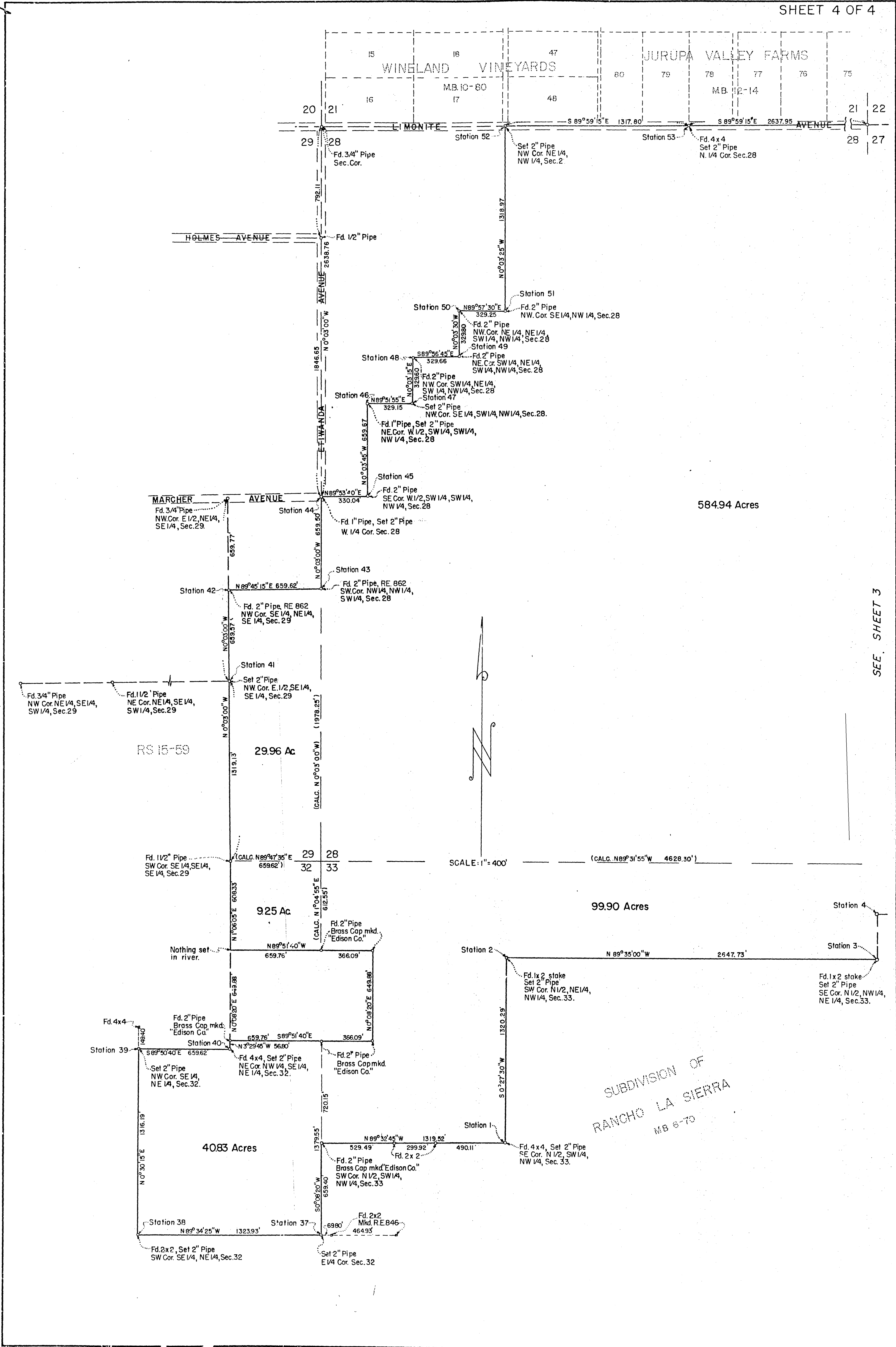
SEE SHEET 4

SEE SHEET 2



SUBDIVISION OF
RANCHO LA SIERRA
MB 6-70

16/55
R/S 16/55



584.94 Acres

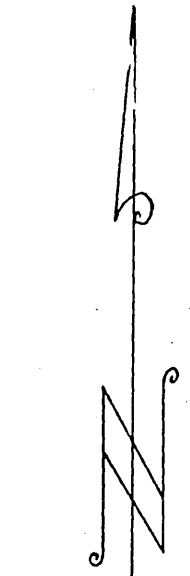
RS 15-59

29.96 Ac

925 Ac

99.90 Acres

4083 Acres



SCALE: 1" = 400'

SUBDIVISION OF
RANCHO LA SIERRA
MB 6-70

SEE SHEET 3