

# RECORD OF SURVEY

Of the N.E. 1/4 and the E. 3/4 of the NW 1/4 of Sec. 9, T. 3S, R. 5E, S.B.  
B. & M., Riverside County, California.  
SURVEY MADE AT THE REQUEST OF ELTON KLATT AND JUNE KLATT, OF 9222  
ANNETTA AVE., SOUTH GATE, LOS ANGELES, CALIF.

### NOTES:

Broken lines indicate easements for road purposes of width shown.  
O when within the easement or at the centerline of Wide Canyon Road indicate 1/2" steel reinforcing bars, 16" long, set 1' below surface.  
20# spikes are set on the centerline of Dillon Road at intersection points not otherwise noted.  
At all other points O indicates 2"x2" redwood stakes.

I hereby certify that I am a Registered Civil Engineer of the State of California, that this map correctly represents a survey made by me during March-April, 1949, that all monuments shown hereon actually exist and their positions are correctly shown and are sufficient to enable the survey to be retraced readily.

*Phil K. Stephens*  
Registered Civil Engineer No. 2767.

### BASIS OF BEARINGS:

The directional bearings shown hereon are derived from the bearing of the centerline of Dillon Road, N. 88° 42' 30" E., as recorded in a Record of Survey Map, Book 15, Page 10, Records of Riverside County, California.

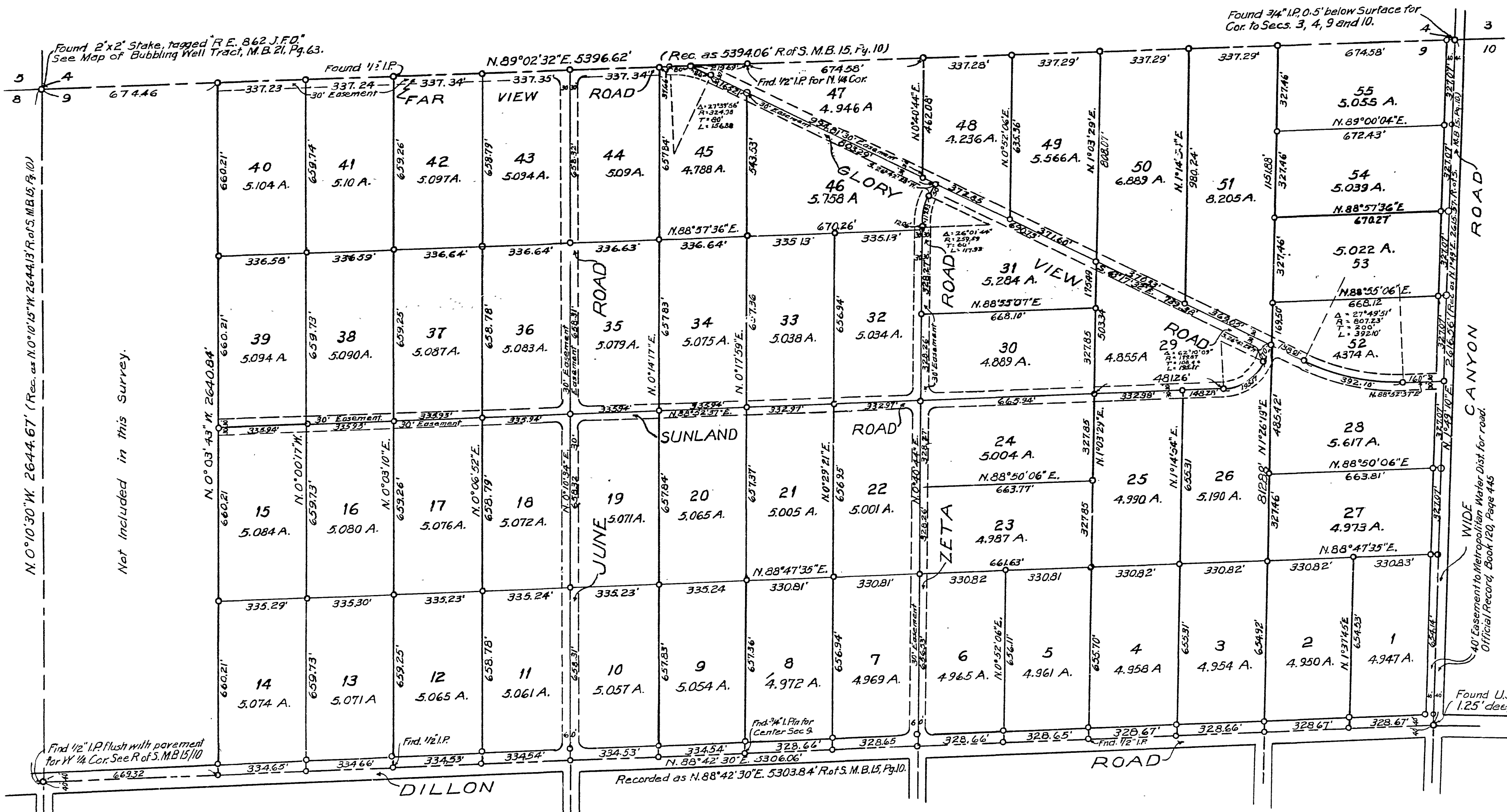
Distances and areas are computed to the centerline of roads and easements.

Phil K. Stephens, Civil Engineer, April, 1949.

SCALE: 1" = 300 Ft.

## FILED

MAY -3 1949  
JACK A. ROSS  
COUNTY RECORDER  
Deputy  
\$1.60 1:50 P.M.



This map is not the delineation of a subdivision as defined in Section 11535 of the California Business and Professions Code because all lots are one acre or more in area and a tentative map hereof has been approved by the governing body.

*Phil K. Stephens*  
Registered Civil Engineer No. 2767.

This map has been examined for compliance with provisions of Chapter 15 of Division 3 of the California Business and Professions Code, and conforms to the tentative map thereof approved by the Board of Supervisors of Riverside County on April 16, 1949.

A.C. Keith County Surveyor  
By G.T. Worsley Deputy.

Examined May 3, 1949  
A.C. Keith  
County Surveyor.  
By G.T. Worsley Deputy.

Found U.S.G.L.O. Pipe with Brass Cap, 1.25" deep for 1/2" Cor.

Not included in this Survey.