

# IN THE CITY OF RIVERSIDE RECORD OF SURVEY

Of a por. of Lots 1 & 2, in the S.E. 1/4 of Section 29, T. 2 S., R. 5 W., S.B. B 4 M.,  
as shown by U.S. Govt. Survey, Riverside County, California.  
January, 1953

Donald J. McKee, L.S.

Scale: 1" = 60'

**FILED**  
FEB 24 1953  
Nancy A. Ross  
City Clerk  
Filed 5:20 PM

Surveyed at the request of: A. F. Oberlin.

I hereby certify that I am a Licensed Land Surveyor in the State of California, and that this map, consisting of one (1) sheet, correctly represents a survey made by me in January, 1953, and that all the monuments shown hereon actually exist, and their positions are correctly shown.

Donald J. McKee  
Licensed Land Surveyor No. 1825

This Record of Survey map was approved by the City Council of the City of Riverside, California, on the 17<sup>th</sup> day of February, 1953.

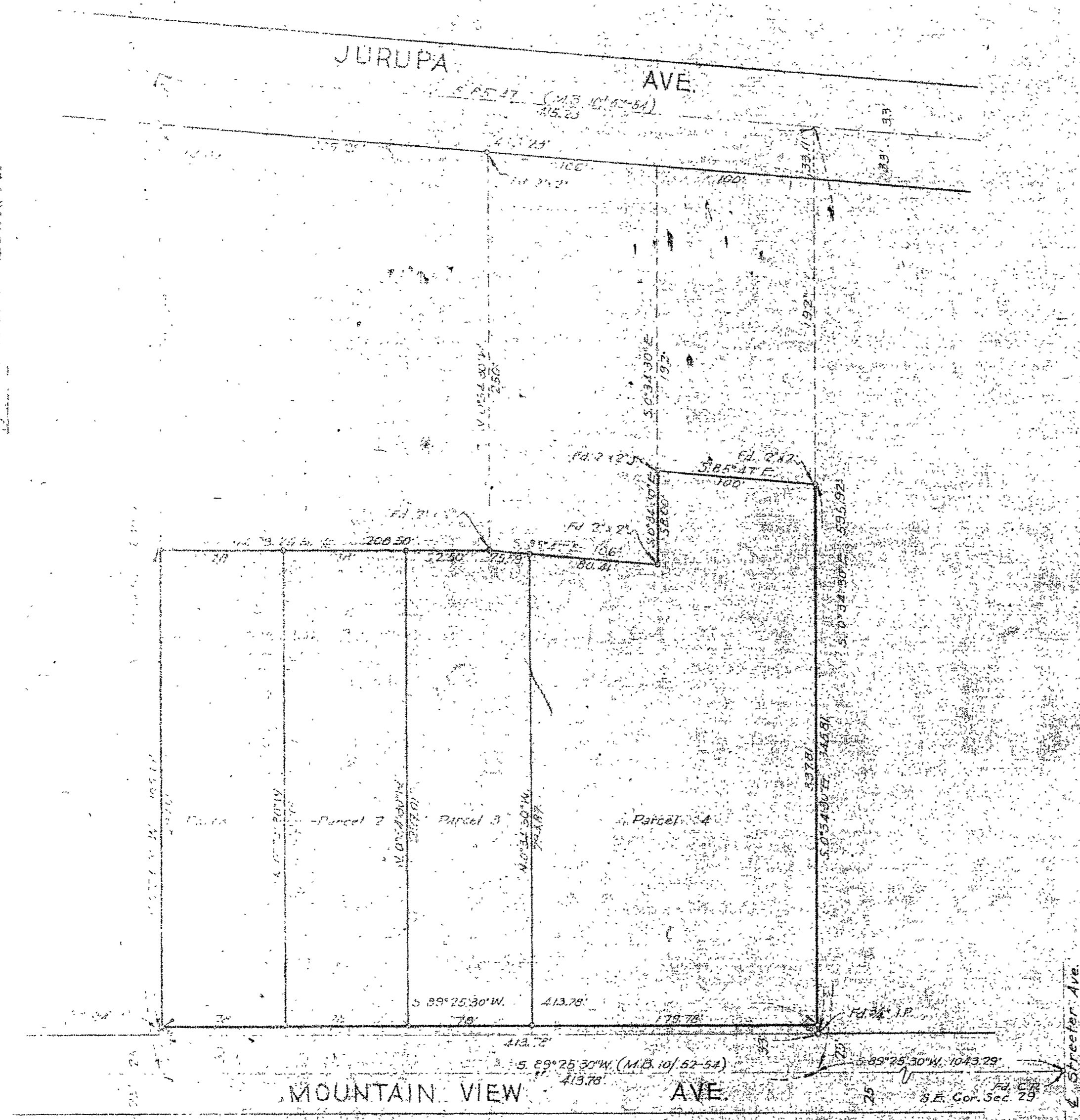
W. J. [Signature]  
City Clerk of the City of Riverside, California.

Examined February 23, 1953.

A.C. KEITH, County Surveyor of Riverside County, California.

by G. T. Worsley  
Deputy

NOTE: Bearings are based on the center line of Jurupa Avenue as being S. 85° 47' E. shown on map of Evans Rio Rancho, filed in Map Book 16, pages 52, 53 and 54 records of Riverside County, Cal. forming 2"x2" Redwood stakes tagged "L.S. 1825" set at all corners, unless otherwise noted. Monuments found as noted.



R/S 19/31

R/S 19/31

CITY # 45

RS 19/31