

5172

**FILED**

FEB-2 1954  
JACK A. ROSS  
COUNTY RECORDER  
By Barbara Crowe  
DEPUTY  
\$1.00 4:40 p.m.

# RECORD OF SURVEY

OF A PORTION OF SECTIONS 33&34, T.2 S., R.6 W., S.B.B.&M., AND  
A PORTION OF SECTIONS 3 & 4, T.3 S., R.6 W., S.B.B.&M.

Survey made at the request of John B. Kortz

I hereby certify that I am a Registered Civil Engineer of the State of California and that this map correctly represents a survey made under my supervision during December 1953, and that all monuments shown hereon actually exist and their positions are correctly shown.

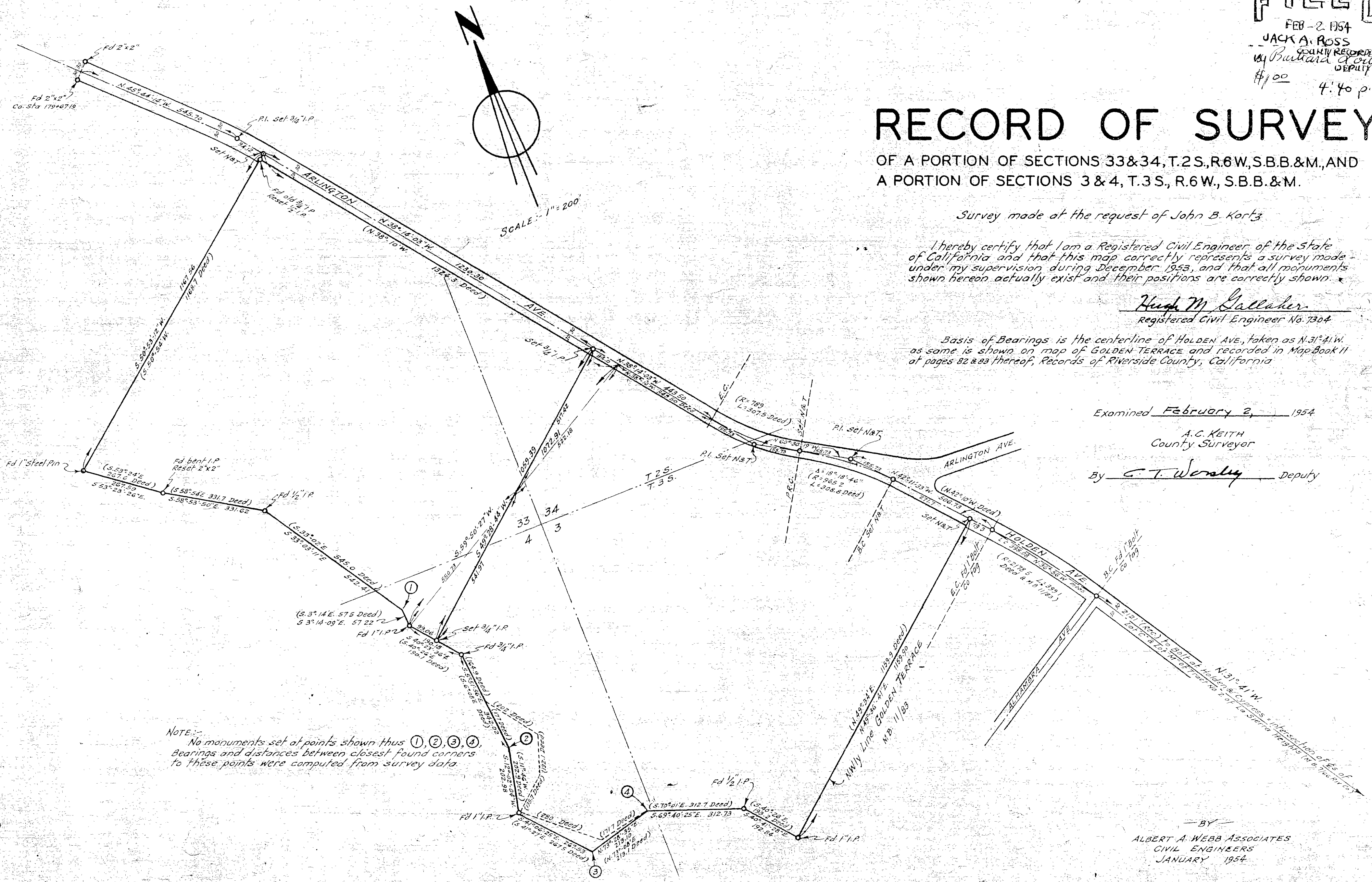
Hugh M. Gallaher  
Registered Civil Engineer No. 7304

Basis of Bearings is the centerline of HOLDEN AVE., taken as N.31°41'W. as same is shown on map of GOLDEN TERRACE and recorded in Map Book 11 at pages 82 & 83 thereof, Records of Riverside County, California

Examined February 2, 1954

A.C. KEITH  
County Surveyor

By G.T. Worsley Deputy



NOTE: No monuments set at points shown thus ① ② ③ ④. Bearings and distances between closest found corners to these points were computed from survey data.

BY  
ALBERT A. WEBB ASSOCIATES  
CIVIL ENGINEERS  
JANUARY 1954