

23/90

S-572

RS 23/90

FILED

FEB 14 1956
Jack A. Ross
C. U. Street.
Filed at 3:00 P.M.
Fee \$5.00

IN THE COUNTY OF RIVERSIDE RECORD OF SURVEY

OF A PORTION OF LOT 2 OF BLOCK 39 OF LA GRANADA AS
RECORDED IN BOOK 12 OF MAPS AT PAGES 42 TO 51 INCLUSIVE,
RECORDS OF RIVERSIDE COUNTY, CALIFORNIA.

-By-
Albert A. Webb Associates
Civil Engineers California
Riverside February 1956

I hereby certify that I am a Registered Civil Engineer of the State of California and that this map consisting of one (1) sheet, correctly represents a survey made under my supervision during January 1956 and that all monuments shown hereon actually exist and their positions are correctly shown or shall be in position not later than March 1956.

Ernest N. Webb
Registered Civil Engineer No. 9876

Survey made at request of Jeanette Weinberg

Engineer's Notes:-

Basis of Bearings is the centerline of Bobb Avenue taken as N 40° 42' 00" W as same is shown on map of La Granada, recorded in Book 12 of Maps at pages 42 thru 51 inclusive thereof, Records of Riverside County, California. Set 2"x2" Redwood stakes fogged R.E. 1229 at all points shown thus o unless otherwise noted.

This map has been examined for compliance with provisions of chapter 15 of division 3 of the California Business and Professions Code and conforms with the tentative map thereof as approved by the Board of Supervisors of Riverside County on 5/6/56.

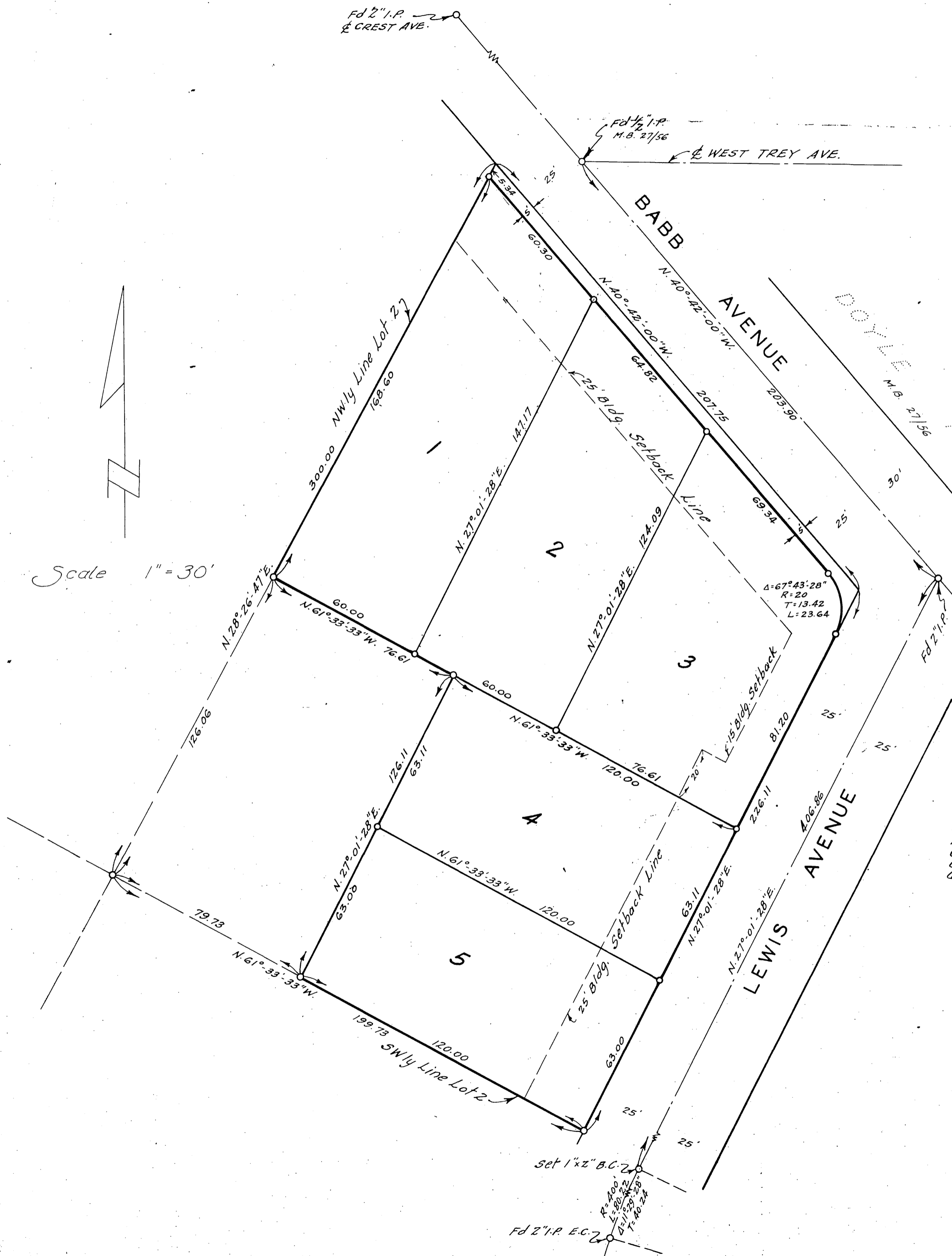
A.C. Keith
County Surveyor
by C. T. Worley
Deputy

Map examined February 8, 1956

A.C. Keith
County Surveyor
By C. T. Worley Deputy

This map is not a subdivision as defined in section 11535 of the Subdivision Map Act in that the partition of land shown hereon complies with paragraph B-1 of said section and a tentative map thereof has been approved by the governing body.

Ernest N. Webb
Registered Civil Engineer No. 9876



Scale 1" = 30'

RS 23/90

S-572

RS 23/90