

24/57

RECORD OF SURVEY

of the W 1/2 of the SE 1/4 of Section 1
T.3 S., R.5 W., S.B. B. & M.

77225

FILED

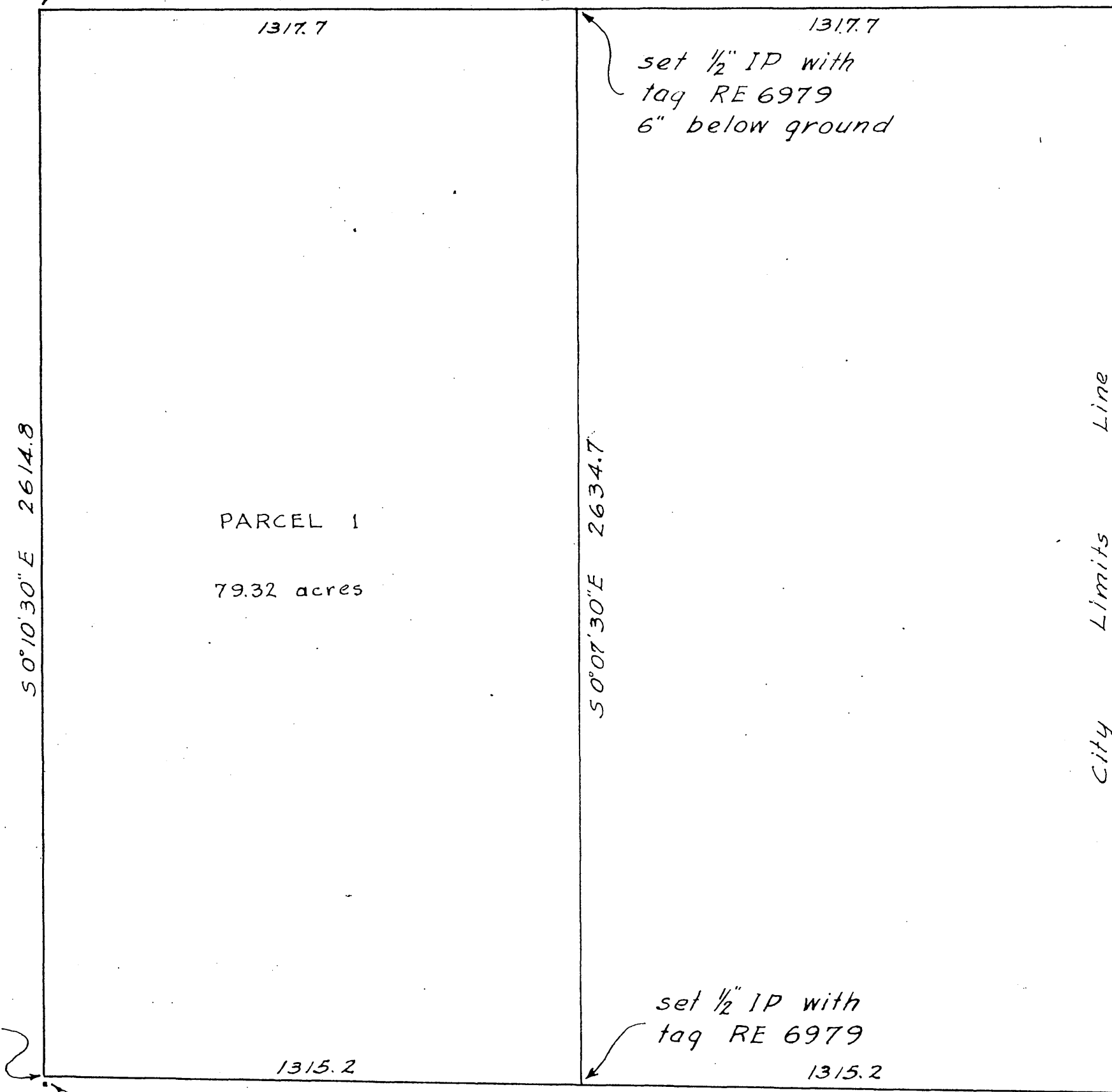
MAY 15 1956
Jack A. Ross
O.A. ~~meat~~
Fee \$5.00
Filed at 12:40 PM

TEQUESQUITE HEIGHTS SUB.
MB. 10 PG. 31

found 3/4" IP
with tag RE 1504

rec. S89° 36 1/2' W 2635.40

found 3x3 with
3/4" IP .15' West
E 1/4 corner



Basis of bearings is the
south line of TEQUESQUITE
HEIGHTS SUB. bearing
S89° 36 1/2' W, recorded MB
10, Pg. 31 in the records of
Riverside County.



This survey made at the request
of Jack Bamberger, Helen Deming,
Christian Deming, et al.

I, JOHN L. MERRIAM, do hereby
certify that I am a Registered
Civil Engineer of the State of
California and that this map
consisting of one sheet correctly
represents a survey made by
me in January 1956, and that
all monuments shown hereon ac-
tually exist and that their posi-
tions are correctly shown.

Apr. 10, 1956 John L. Merriam
RE 6979

Map examined May 15, 1956
A.C. Keith
County Surveyor, Riverside Co.

by G. T. Worsley
Deputy

set 2" IP with
tag RE 6979
14 links North,
from WC as per
notes of original
Government survey

found 2x4
marked WC 1/4 S

set 1/2" IP with
tag RE 6979

found 2 1/2" IP in
concrete. Set
tag RE 6979.
SE cor. Sec. 1

RS 24/57