

25/23

S-574

RS 25/23

# IN THE COUNTY OF RIVERSIDE RECORD OF SURVEY

OF THE SOUTHERLY LINE OF BLOCK  
37 OF ALCAZAR AS SHOWN BY MAP  
ON FILE IN BOOK 16 OF MAPS AT  
PAGES 31 THRU 34 THEREOF, RECORDS  
OF RIVERSIDE COUNTY, CALIFORNIA.

BY  
ALBERT A. WEBB ASSOCIATES  
CIVIL ENGINEERS  
JULY 1956

Survey made at the request of the Anza Water Company.

I hereby certify that I am a Registered Civil Engineer  
of the State of California, and that this map correctly  
represents a survey made under my supervision during  
July 1956, and that all monuments shown hereon actually  
exist and their positions are correctly shown.

Dated Aug 13<sup>th</sup> 1956 Ernest N. Webb  
Registered Civil Engineer No. 9876.

### ENGINEER'S NOTES

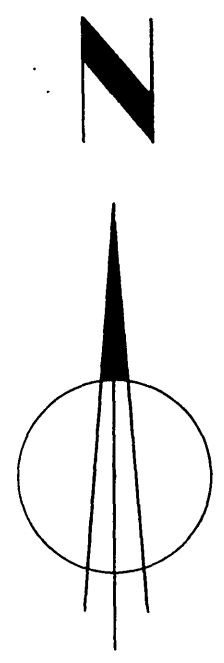
1. Basis of bearings is the centerline of Van Buren Street taken as N0°17'E as same is shown on map of Alcazar filed in Book 16 of Maps at pages 31 thru 34 thereof, Records of Riverside County, California.
2. Set 3/4" I.P. tagged R.E. 9876 at all points shown thus o unless otherwise noted.
3. Found monuments as noted at all points shown thus •

Map examined August 30, 1956  
A. C. KEITH  
County Surveyor

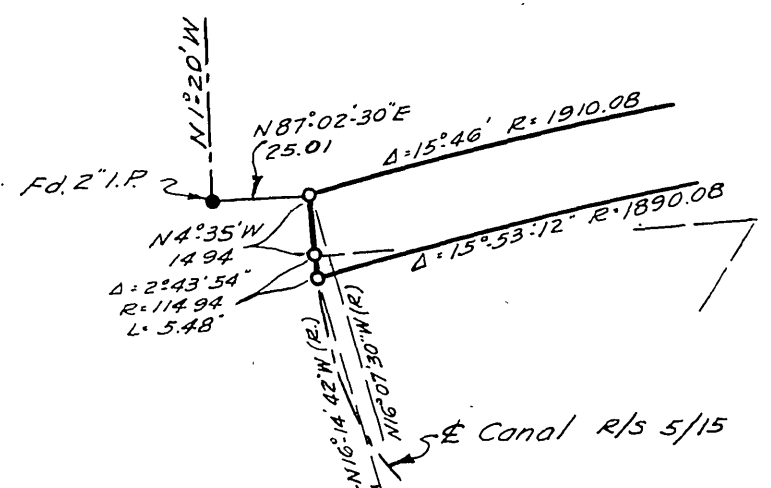
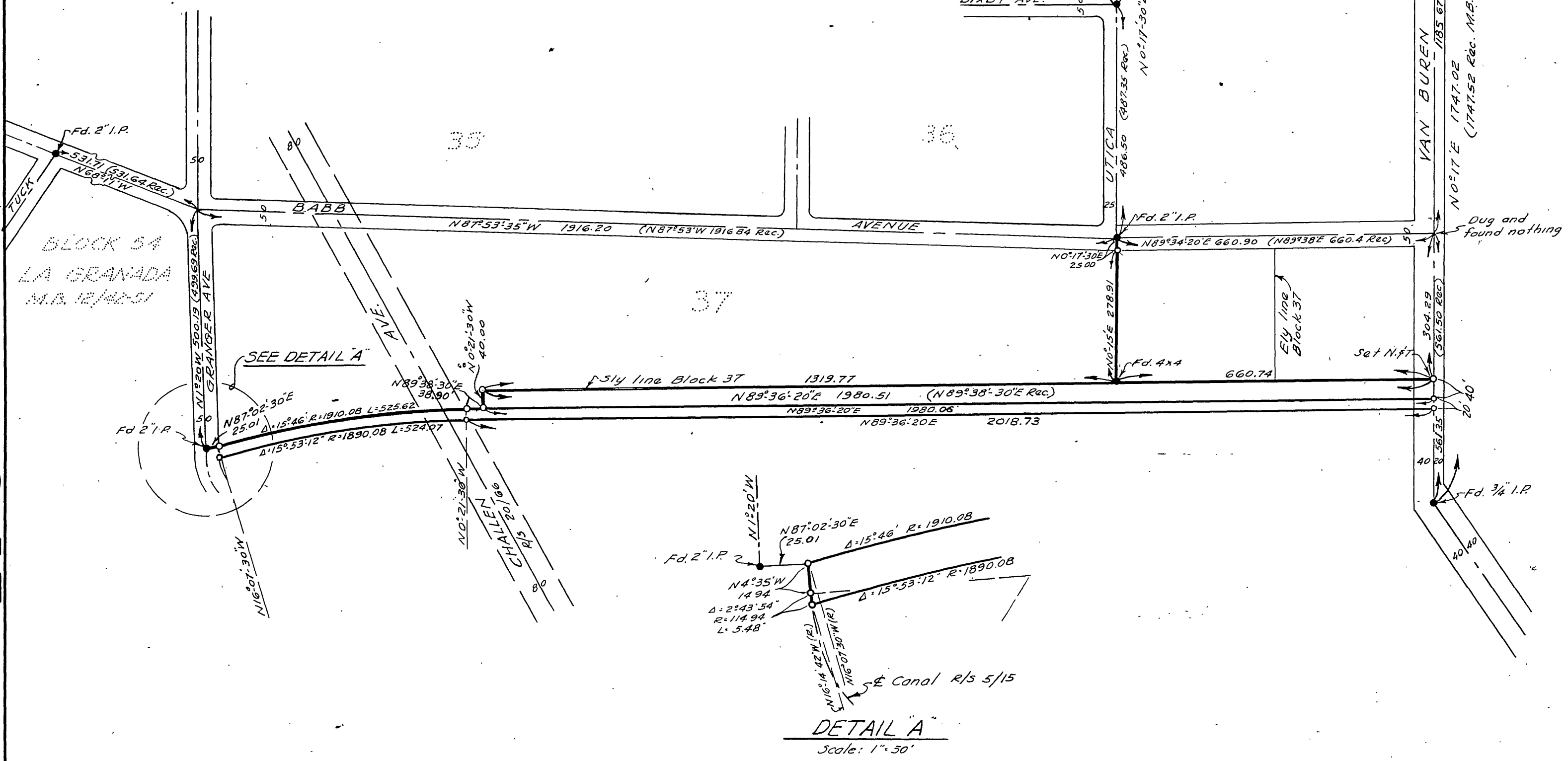
By C. T. Worsley Deputy

## FILED

AUG 30 1956  
Jack A. Ross  
D. A. Wheat  
Fee \$5.00  
Filed at 4:45 P.M.



Scale - 1" = 200'



DETAIL A  
Scale: 1" = 50'

RS 25/23

RS 25/23  
S-574