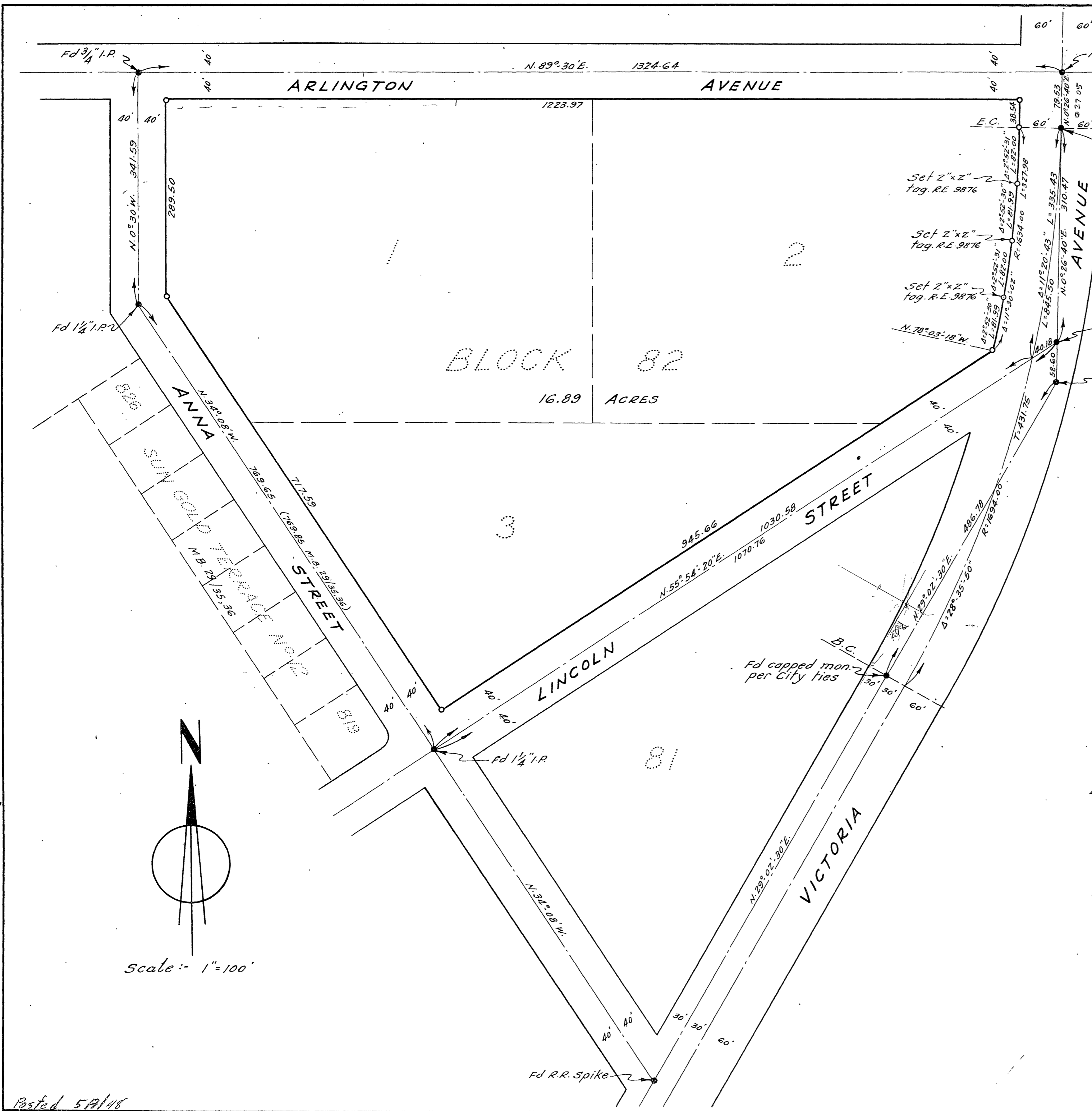


S-133 25/47

RS 25/47



FILED
 OCT 30 1956
 Jack A. Ross
 O.A. Wheat
 Fee \$5.00
 Filed at 4:00 P.M.

IN THE CITY OF RIVERSIDE
RECORD OF SURVEY

OF BLOCK 82 OF ARLINGTON HEIGHTS AS SHOWN
 BY MAP RECORDED IN BOOK 11 OF MAPS AT PAGES
 20 & 21 THEREOF, RECORDS OF SAN BERNARDINO
 COUNTY, CALIFORNIA

— BY —
 ALBERT A. WEBB ASSOCIATES
 CIVIL ENGINEERS
 RIVERSIDE CALIFORNIA
 OCTOBER 1956

SURVEY MADE AT THE REQUEST OF E.K. FLEMING

I hereby certify that I am a Registered Civil Engineer
 of the State of California and that this map correctly
 represents a survey made under my supervision during
 October 1956 and that all monuments shown hereon
 actually exist and their positions are correctly shown.

Ernest N. Webb
 Registered Civil Engineer No. 9876

ENGINEER'S NOTES:

Basis of Bearings is the centerline of ANNA STREET,
 taken as N. 34° 08' W., as same is shown on map of SUN GOLD
 TERRACE No. 12 recorded in Book 29 of Maps of pages 35 & 36
 thereof, Records of Riverside County, California.
 Found monuments as noted at all points shown thus •
 Set 3/4" I.P. tagged R.E. 9876 at all points shown thus ○

Map Examined October 30, 1956
 A.C. KEITH
 County Surveyor

By G.T. Worsley Deputy

S-133

RS 25/47

RS 25/47

Posted 5/17/46