

21-5

S-170

26/15

RS 26/15

FILED

MAR 14 1957
Jack A. Ross
O. G. Keith
Fee \$5.00
Filed at 2:55 PM

IN THE COUNTY OF RIVERSIDE

RECORD OF SURVEY

OF A PORTION OF SECTION 32, T.3S., R.5W. AS SHOWN BY SECTIONALIZED SURVEY OF THE RANCHO EL SOBRANTE RECORDED IN MAP BOOK 7 AT PAGE 10, RECORDS OF SAN BERNARDINO COUNTY, CALIFORNIA

BY
ALBERT A. WEBB ASSOCIATES
CIVIL ENGINEERS
FEBRUARY 1957

Survey made at request of El Sobrante Land and Development Company

I hereby certify that I am a Registered Civil Engineer of the State of California and that this map correctly represents a survey made under my supervision during February 1957 and that all monuments shown hereon actually exist and their positions are correctly shown.

Ernest N. Webb
Registered Civil Engineer No. 9876

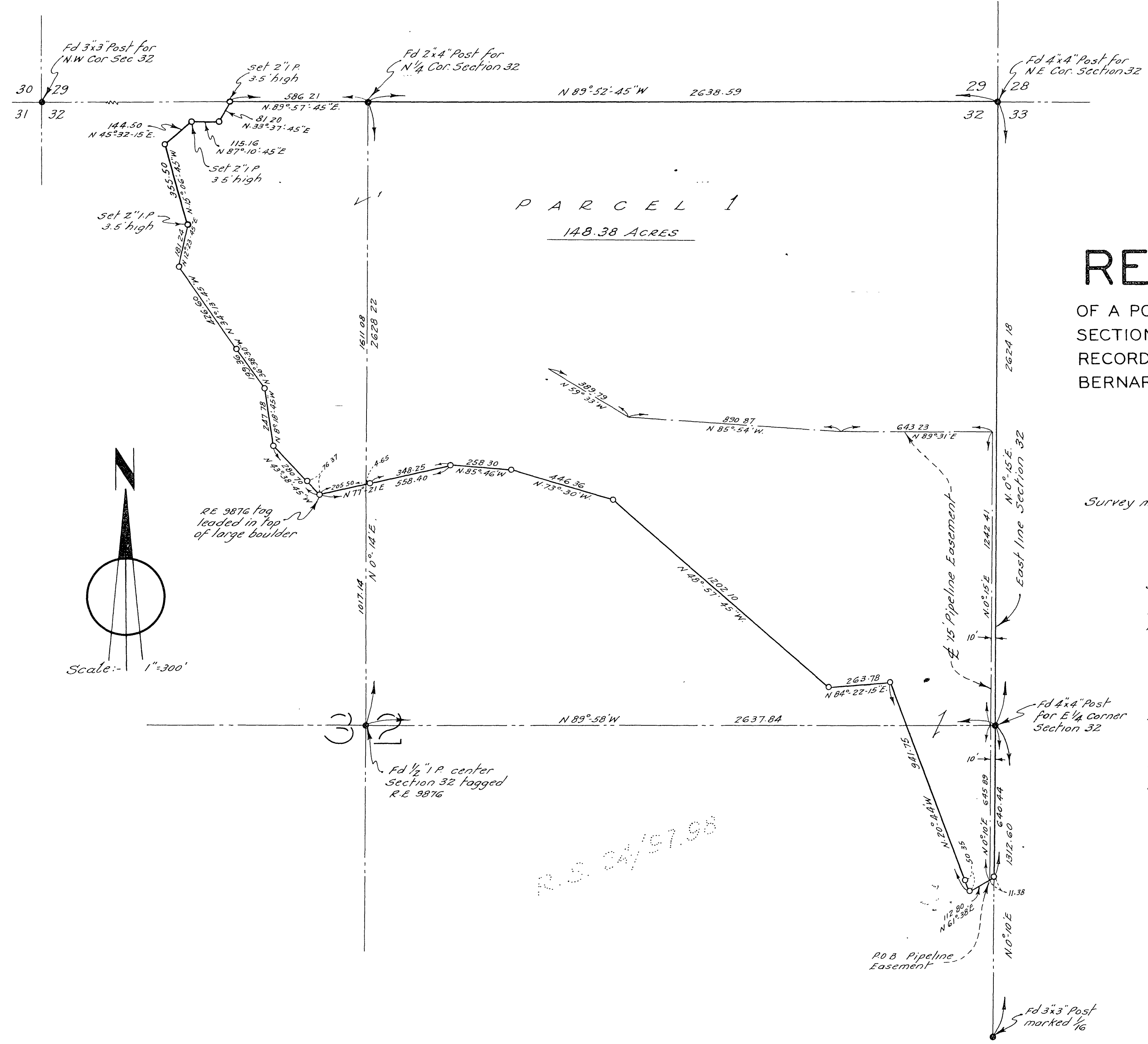
ENGINEER'S NOTES :-

1. Basis of Bearings is the South line of the North half of Section 32, taken as N. 89° 58' W. per Record of Survey RS 24/97, 98, Riverside County Records
2. Found monuments as noted at all points shown thus •
3. Set 3/4" I.P. tagged R.E. 9876 at all points shown thus o unless otherwise noted.

Map examined March 14, 1957
A. G. KEITH
County Surveyor

By G. T. Worsley Deputy

PARCEL 1
148.38 ACRES



R.S. 24/97, 98

S-170

RS 26/15

21-5