

26/59

# RECORD OF SURVEY

Of a Portion of the South Half of Section 3, as shown on a Subdivision of Rancho La Sierra, M.B. 6 page 70 Rec. Riv. Co., Calif.  
Surveyed at the request of Russell L. Tracy.

By RIVERSIDE ENGINEERING COMPANY, Inc.

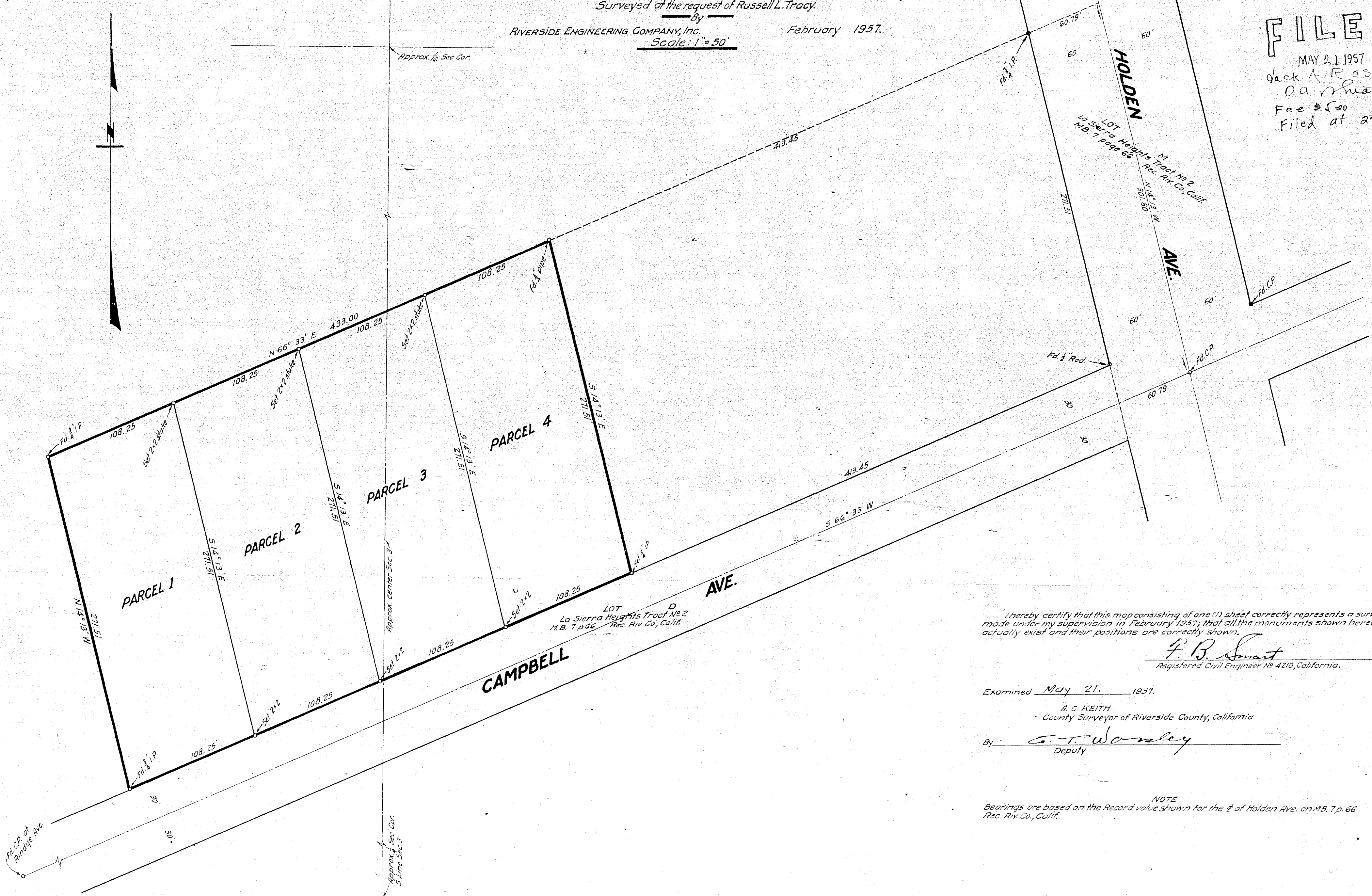
February 1957.

Scale: 1" = 50'

37203

## FILED

MAY 21 1957  
Jack A. Ross  
O.A. Ross  
Fee \$5.00  
Filed at 2:15 P.M.



I hereby certify that this map consisting of one (1) sheet correctly represents a survey made under my supervision in February 1957; that all the monuments shown hereon actually exist and their positions are correctly shown.

F. B. Smart  
Registered Civil Engineer No 4210, California.

Examined May 21, 1957.

A. C. KEITH  
County Surveyor of Riverside County, California

By G. T. Wansley  
Deputy

NOTE  
Bearings are based on the Record value shown for the E of Holden Ave. on M.B. 7 p. 66 Rec. Riv. Co., Calif.

Job No 1829  
F.B. 10-46.

# RS 26/59