

# IN THE CITY OF RIVERSIDE RECORD OF SURVEY

OF THE E'LY LINES OF LOTS 2 & 3 OF EVANS RIO RANCHO, MAP BK. 10, PG. 54,  
THE N'LY LINES OF JURUPA GRANDE HOMES, UNIT #1, MAP BK. 26, PG. 44,  
THE NW'LY LINES OF ADD.#1 TO GRAND AVE. TRACT, MAP BK. 6, PG. 90,  
THE NW'LY LINES OF LORD TRACT #2, MAP BK. 25, PG. 90,  
AND THE N'LY LINE OF EL RIO RANCHO, MAP BK. 29, PG. 42, -  
ALL RECORDS OF RIVERSIDE COUNTY, CALIFORNIA.

JULY, 1957

SCALE: 1" = 200'

SURVEY MADE AT THE REQUEST OF THE CITY OF RIVERSIDE.

### CIVIL ENGINEER'S CERTIFICATE

I hereby certify that I am a Registered Civil Engineer of the State of California and that this map correctly represents a survey made under my supervision during July 1957 and that all monuments shown hereon actually exist and their positions are correctly shown.

*James F. Mathews*  
Registered Civil Engineer No. 8134

### COUNTY SURVEYOR'S CERTIFICATE

Examined October 7, 1957,  
A.C. KEITH COUNTY SURVEYOR  
By G.T. Worsley Deputy.

### ENGINEER'S NOTES

Bearings are based on a Southeasterly line of Lot 3, EVANS RIO RANCHO, Map Book 10, Page 54, Rec. Riv. Co.; said line being shown as bearing N 59° 10' E a distance of 407.41 feet.

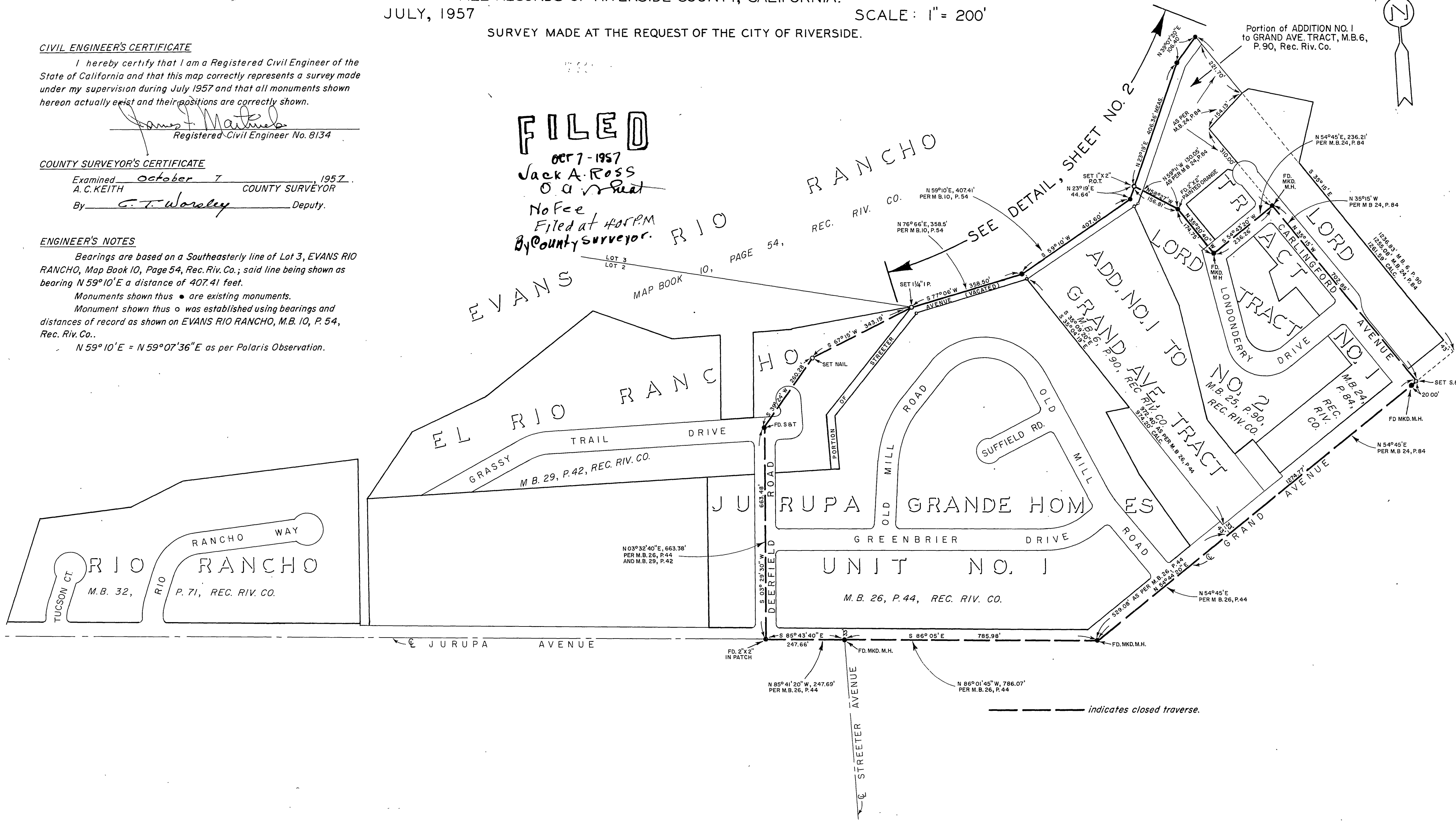
Monuments shown thus ● are existing monuments.

Monument shown thus ○ was established using bearings and distances of record as shown on EVANS RIO RANCHO, M.B. 10, P. 54, Rec. Riv. Co..

N 59° 10' E = N 59° 07' 36" E as per Polaris Observation.

**FILED**

OCT 7 - 1957  
Jack A. Ross  
County Surveyor  
No Fee  
Filed at 4:05 P.M.  
By County Surveyor.



975 27 1957

2/12

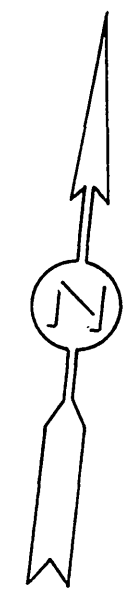
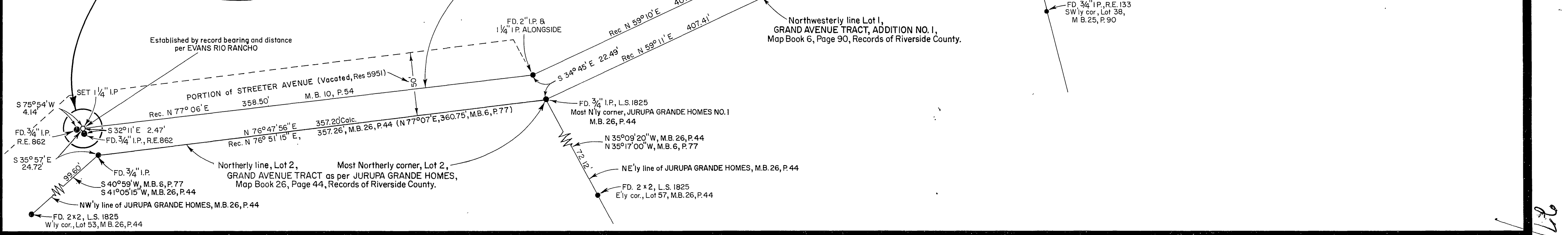
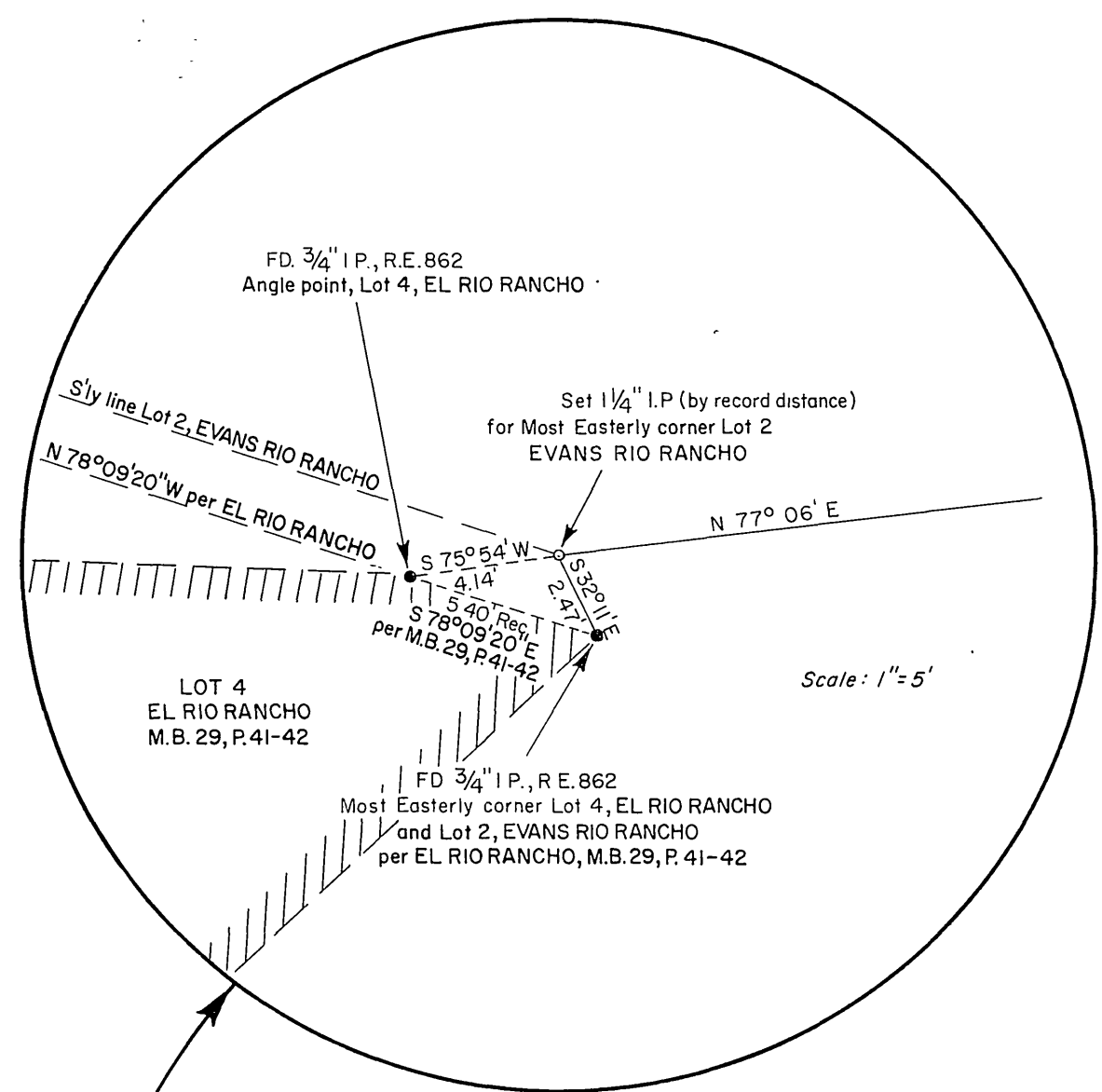
# IN THE CITY OF RIVERSIDE RECORD OF SURVEY

OF THE E'LY LINES OF LOTS 2 & 3 OF EVANS RIO RANCHO, MAP BK. 10, PG. 54,  
THE N'LY LINES OF JURUPA GRANDE HOMES, UNIT #1, MAP BK. 26, PG. 44,  
THE NW'LY LINES OF ADD.#1 TO GRAND AVE. TRACT, MAP BK. 6, PG. 90,  
THE NW'LY LINES OF LORD TRACT #2, MAP BK. 25, PG. 90,  
AND THE N'LY LINE OF EL RIO RANCHO, MAP BK. 29, PG. 42,-  
ALL RECORDS OF RIVERSIDE COUNTY, CALIFORNIA.

JULY, 1957

SCALE: 1" = 50'

SURVEY MADE AT THE REQUEST OF THE CITY OF RIVERSIDE.



Handwritten initials and date: *HC/LB*