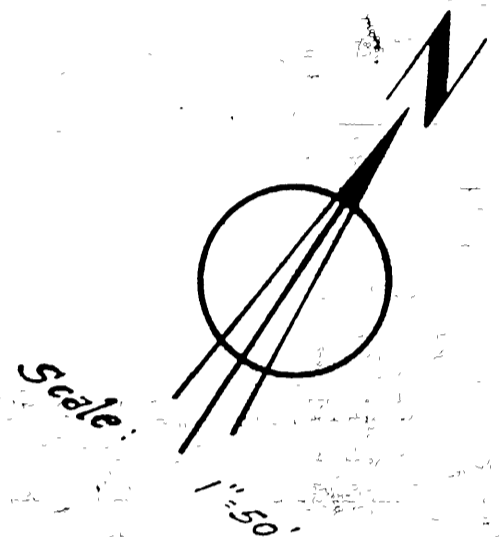
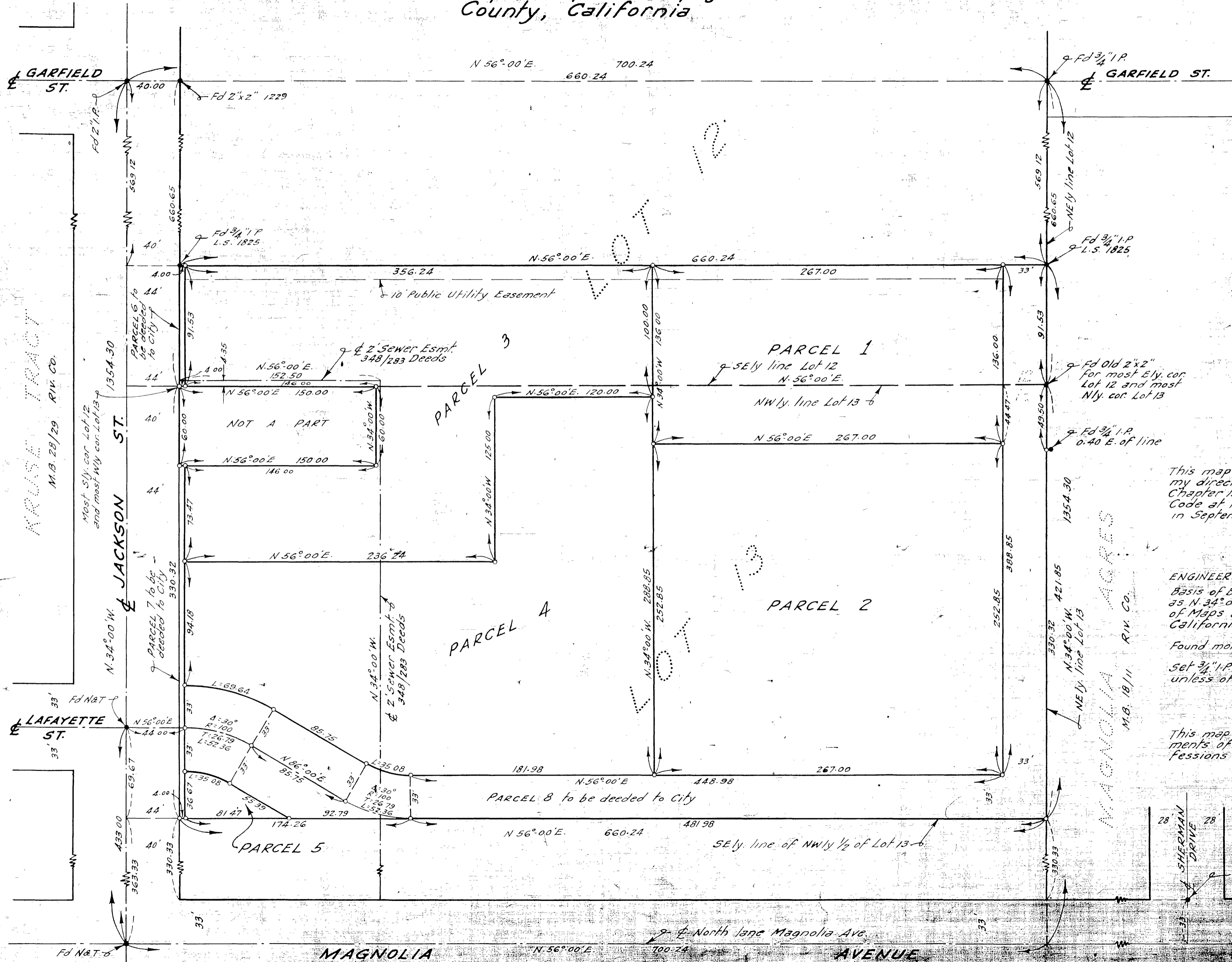


RECORD OF SURVEY

Of portions of Lots 12 & 13 of Block 13 of R.L. & I. Co. Lands as per Map Book 1 page 70, records of San Bernardino County, California

FILED

DEC 2-1957
Jack A. Ross
O.A. Wheat
Fee \$5.00
Filed by County Surveyor
at 3:10 P.M.



BY
ALBERT A. WEBB ASSOCIATES
CIVIL ENGINEERS
SEPTEMBER 1957

This map correctly represents a survey made by me or under my direction in conformance with the requirements of Chapter 15 of Division 3 of the Business and Professions Code at the request of Dr. J. Dee Lansing in September, 1957.

Ernest N. Webb
R.E. No. 9876

ENGINEER'S NOTES:
Basis of Bearings is the West line of MAGNOLIA ACRES, taken as N. 34° 00' W, as same is shown on map recorded in Book 18 of Maps at page 11 thereof, records of Riverside County, California.

Found monuments as noted at all points shown thus •
Set 3/4" I.P. tagged R.E. 9876 at all points shown thus ○ unless otherwise noted.

This map has been examined for conformance with the requirements of Chapter 15 of Division 3 of the Business and Professions Code this 2nd day of December, 1957.

C. T. Worsley
County Surveyor

This map does not represent a subdivision as defined by Section 11535 of the Business and Professions Code, and the parcels are set forth herewith for the purpose of creating a division, and said parcels are not for sale within the meaning of a subdivision.

Ernest N. Webb
R.E. No. 9876

RS 27/35

RS 27/35

RS 27/35