

RECORDER'S CERTIFICATE

Filed for record this 19th day of Dec., 1957, of 1:45 P.M. in book 27 of page 43, at the request of County Surveyor.

Jack A. Ross  
County Recorder  
By O.G. Pruitt Deputy.  
Fee \$5.00

IN THE CITY OF RIVERSIDE

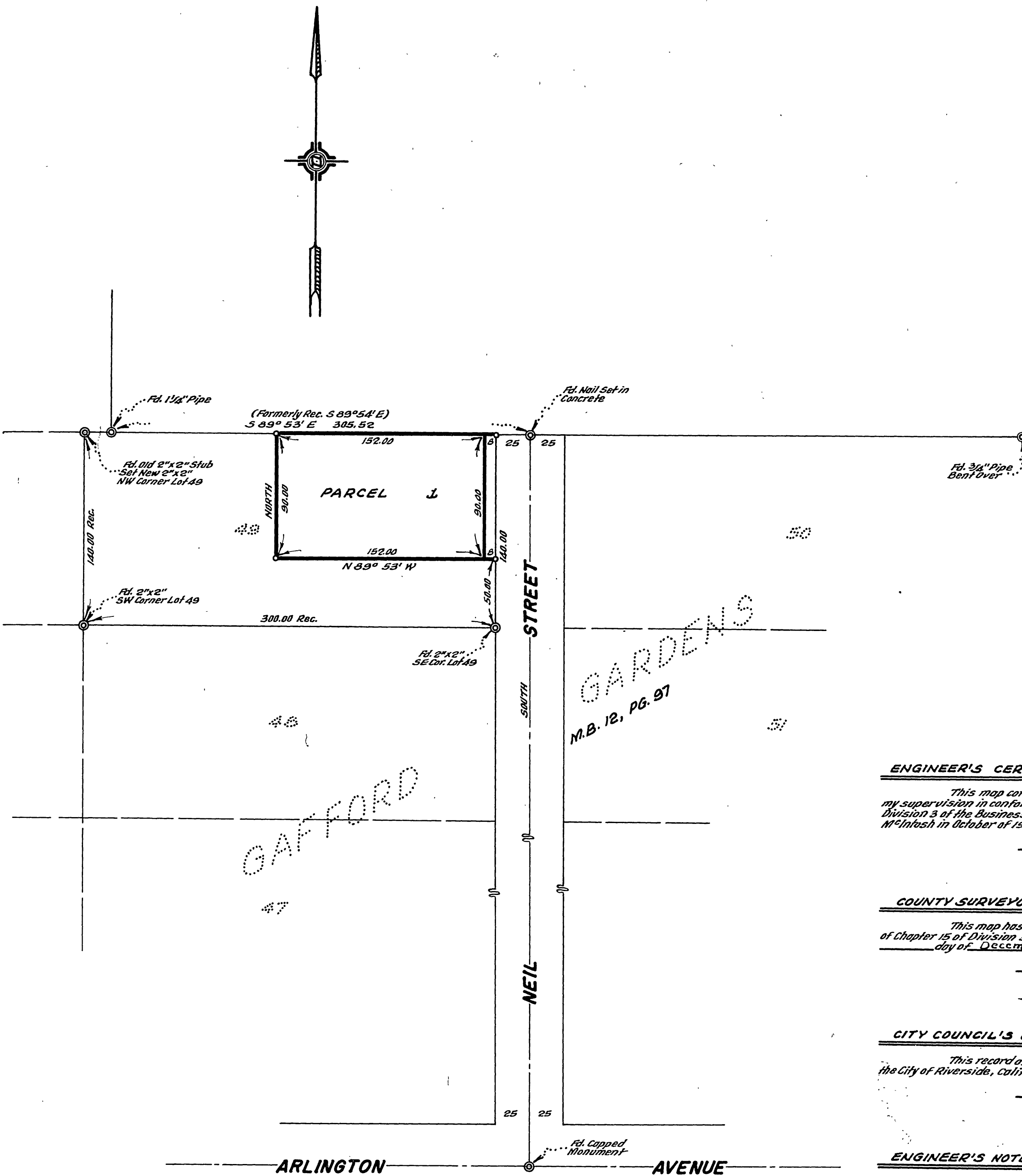
# RECORD OF SURVEY

OF A PORTION OF LOT 49 OF GAFFORD GARDENS AS SHOWN ON MAP ON FILE IN MAP BOOK 12, PAGE 97, RECORDS OF RIVERSIDE COUNTY, CALIFORNIA.

NOVEMBER 1957

SCALE 1" = 60'

— J. F. DAVIDSON, C. E.



ENGINEER'S CERTIFICATE

This map correctly represents a survey made by me or under my supervision in conformance with the requirements of Chapter 15 of Division 3 of the Business and Professions Code of the request of Jack M. Inash in October of 1957.

J. F. Davidson  
Registered Civil Engineer No. 862

COUNTY SURVEYOR'S CERTIFICATE

This map has examined for conformance with the requirements of Chapter 15 of Division 3 of the Business and Professions Code this 18th day of December, 1957.

A.C. Keith  
County Surveyor  
C. T. Worley  
Deputy

CITY COUNCIL'S CERTIFICATE

This record of survey map was approved by the City Council of the City of Riverside, California, on the 19th day of Dec., 1957.

W. H. White  
City Clerk of the City of Riverside, California

ENGINEER'S NOTE

Bearings are based on the center line of NEIL STREET, being 'SOUTH' as shown on map of Gafford Gardens, M.B. 12, Pg. 97, Recs. Riv. Co., Calif.

└ indicates 2"x2" stakes, jagged R.E. 862, set.