

IN THE CITY OF RIVERSIDE

# RECORD OF SURVEY

OF A PORTION OF GOVERNMENT LOT I, SECTION 34, T. 2 S., R. 5 W., S. B. B. & M.

SEPTEMBER 1957

J. F. DAVIDSON, C. E.

SCALE 1" = 50'

### RECORDER'S CERTIFICATE

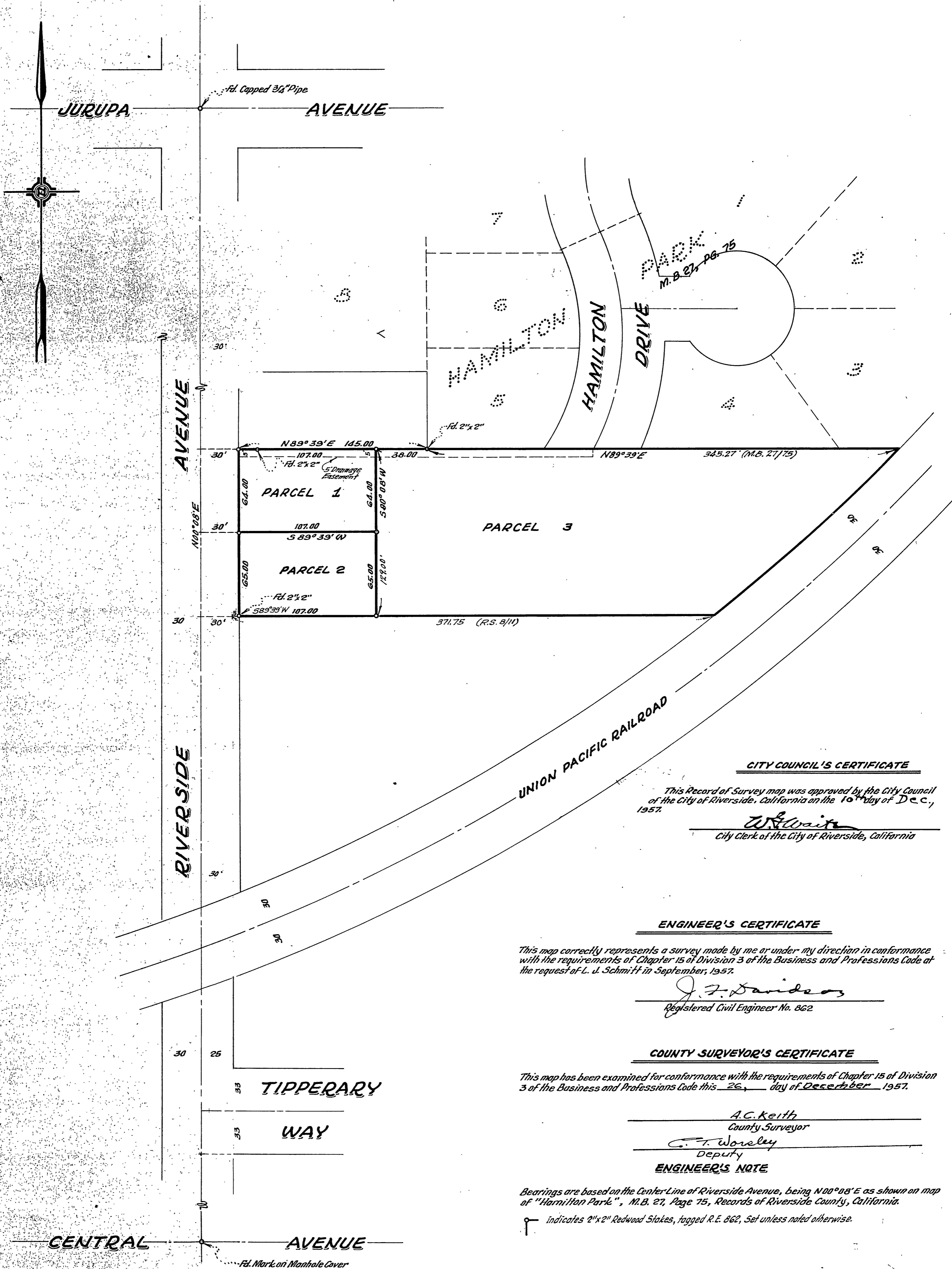
Filed for record this 30th day of Dec., 1957, at 4:20 P. M. in Book 27 of page 53, at the request of County Surveyor.

Jack A. Ross

County Recorder

By O.A. Mead Deputy

Fee \$5.00



### CITY COUNCIL'S CERTIFICATE

This Record of Survey map was approved by the City Council of the City of Riverside, California on the 10th day of Dec., 1957.

W. Swait

City Clerk of the City of Riverside, California

### ENGINEER'S CERTIFICATE

This map correctly represents a survey made by me or under my direction in conformance with the requirements of Chapter 15 of Division 3 of the Business and Professions Code at the request of L. J. Schmitt in September, 1957.

J. F. Davidson

Registered Civil Engineer No. 862

### COUNTY SURVEYOR'S CERTIFICATE

This map has been examined for conformance with the requirements of Chapter 15 of Division 3 of the Business and Professions Code this 26th day of December, 1957.

A.C. Keith

County Surveyor

C. T. Woreley

Deputy

### ENGINEER'S NOTE

Bearings are based on the Center Line of Riverside Avenue, being N 00° 08' E as shown on map of "Hamilton Park", M.B. 27, Page 75, Records of Riverside County, California.

† indicates 2"x2" Redwood Stakes, tagged R.E. 862, Set unless noted otherwise.