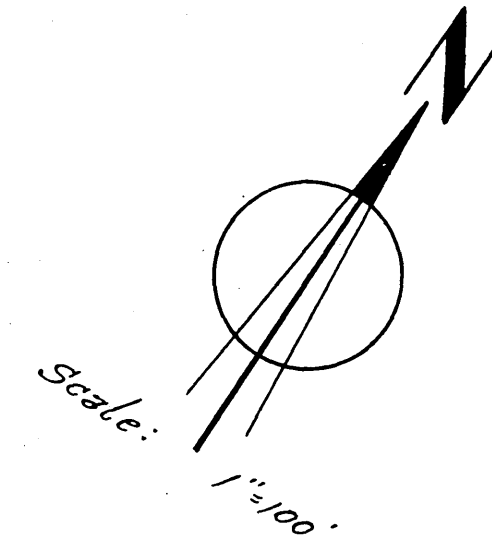
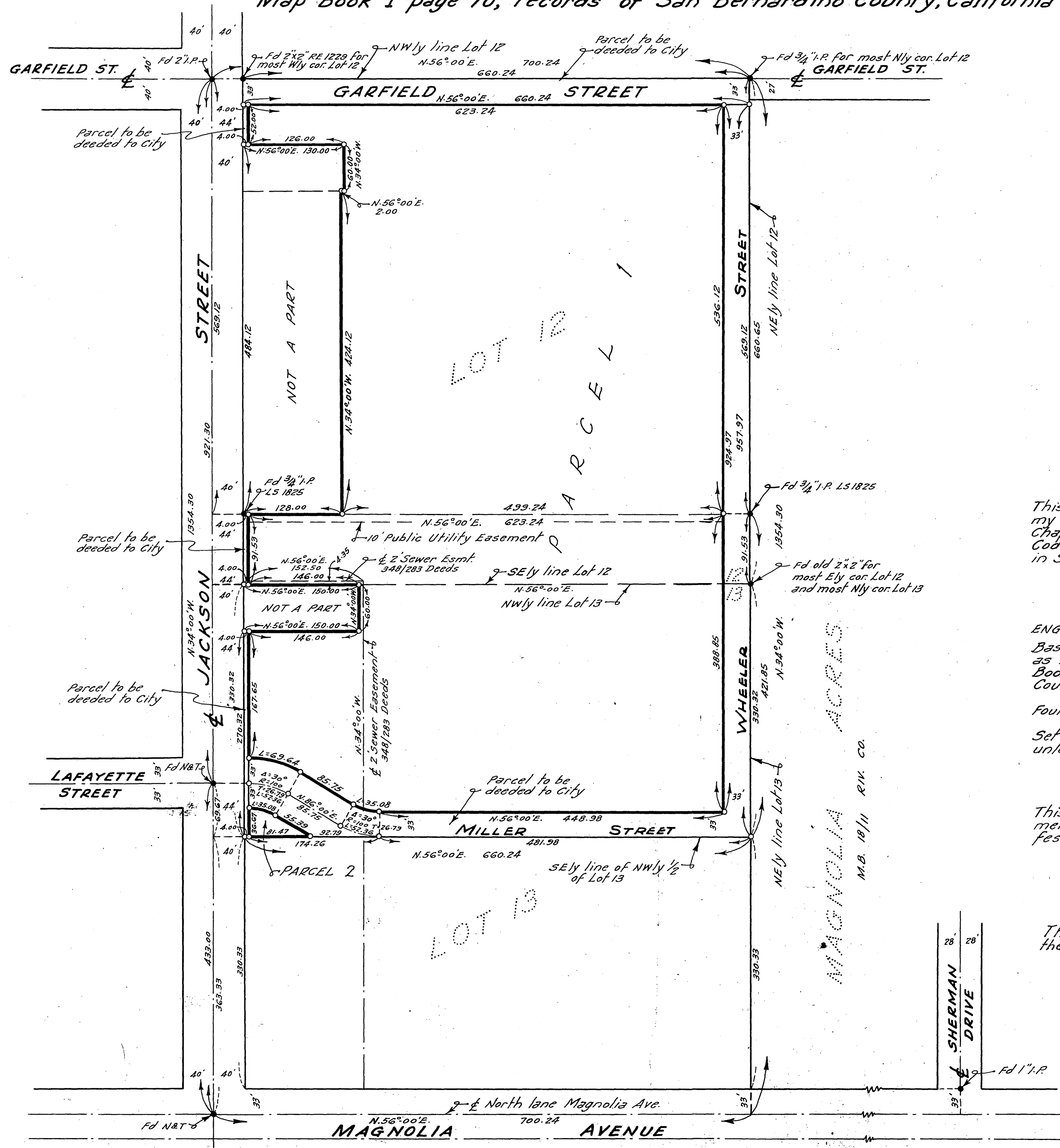


RECORD OF SURVEY

Of portions of Lots 12 & 13 of Block 13 of R.L. & I. Co. Lands as per Map Book 1 page 70, records of San Bernardino County, California



BY
 ALBERT A. WEBB ASSOCIATES
 CIVIL ENGINEERS
 OCTOBER 1957

This map correctly represents a survey made by me or under my direction in conformance with the requirements of Chapter 15 of Division 3 of the Business and Professions Code at the request of Dr. J. Dee Lansing, in September, 1957.

Ernest N. Webb
 R.C.E. No. 9876

ENGINEER'S NOTES:
 Basis of Bearings is the West line of MAGNOLIA ACRES, taken as N.34°00'W, as same is shown on map recorded in Book 18 of Maps at page 11 thereof, records of Riverside County, California.

Found monuments as noted at all points shown thus •
 Set 3/4" I.P. tagged R.E. 9876 at all points shown thus o unless otherwise noted.

This map has been examined for conformance with the requirements of Chapter 15 of Division 3 of the Business and Professions Code this 4th day of February 1958

A.C. Keith
 County Surveyor
 by C.T. Worsley
 Deputy

This Record of Survey was approved by the City Council of the City of Riverside, California on the 24th day of December, 1957.

W. J. Coates
 City Clerk of the City of Riverside, California

Filed for record this 4th day of Feb. 1958
 at 1:00 P.M. in Book 27 at page 62, at the request of County Surveyor.

Jack A. Ross
 County Recorder
 By O.A. Yarnall Deputy
 Fee #J-00 W.O. 57-295 F.B. 353/95