

IN THE CITY OF RIVERSIDE RECORD OF SURVEY

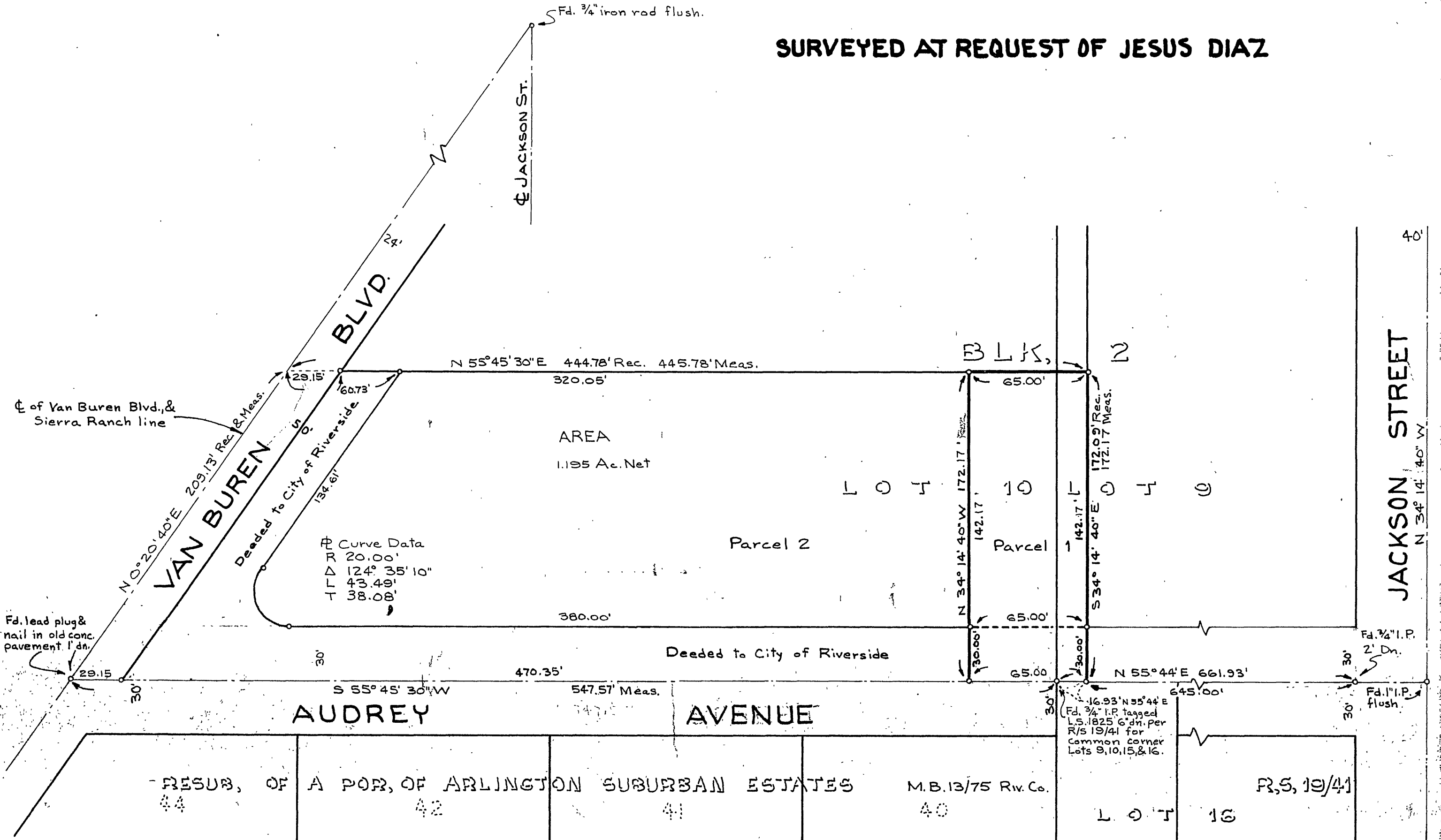
OF PORTIONS OF LOTS 9 & 10, BLOCK 2, OF THE
RIVERSIDE LAND AND IRRIGATING COMPANY
AS SHOWN IN MAP BOOK 1, PAGE 70, RECORDS
OF SAN BERNARDINO COUNTY.

Filed for record this 26th
day of Feb., 1958, at
3:50 P.M. in Book 27 at
page 76, at the request of
County Surveyor.

Jack A. Ross
County Recorder
By O.A. Wheat
Deputy
Fee \$5.00

DAVID F. ROMERO, CIVIL ENGINEER

SURVEYED AT REQUEST OF JESUS DIAZ



1"=50'

OCTOBER, 1957

This map correctly represents a survey made by me or under my direction in conformance with the requirements of Chapter 15 of Division 3 of the Business and Professions Code at the request of Jesus Diaz in October, 1957.

David F. Romero
R.E. 10070

Basis of Bearings is Center Line of Audrey Street, given as N 55° 44' E on Record of Survey 19/41.

° Indicates 2x2 R.W.S tagged R.E. 10070 set, except as noted.

This map has been examined for conformance with the requirements of Chapter 15 of Division 3 of the Business and Professions Code this 26th day of February, 1958.

A.C. Keith
County Surveyor
by C.T. Worsley
Deputy

This Record of Survey was approved by the
City Council of the City of Riverside, California,
on the 14th day of January, 1958.

W. Smith
City Clerk