

IN THE CITY OF RIVERSIDE RECORD OF SURVEY

Being a Survey of a Portion of Lots 24 and 25 of the Resubdivision of Block 32 of Arlington Heights as shown by Map on file in Bk. 1 of Maps Page 37 Records of Riverside County, Calif

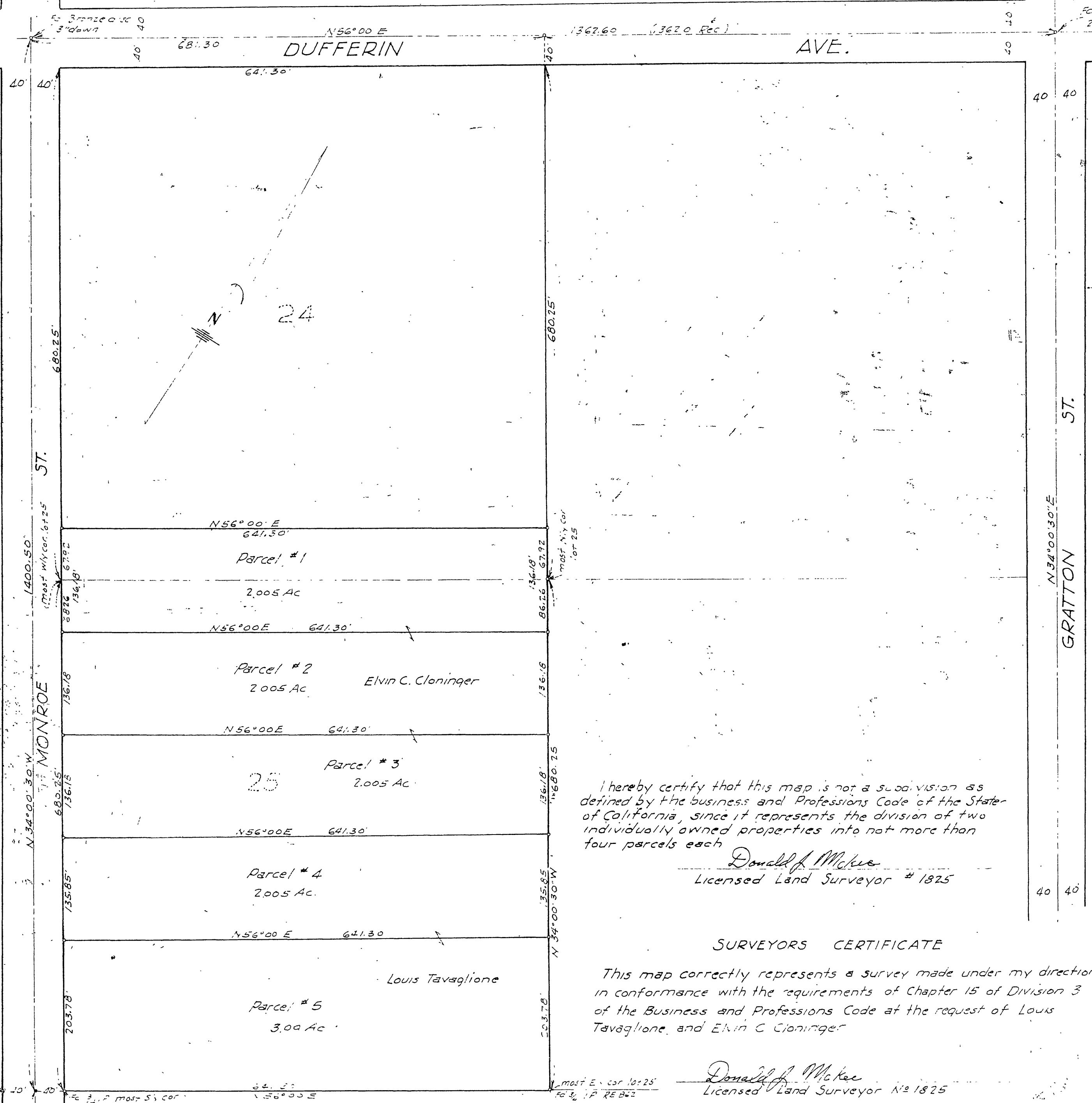
December 1957

Scale 1in=100ft

Donald J McKee ~ Licensed Surveyor

Filed for Record this 2 day of April 1959
at 4:10 PM in Book 28 at Page 1
at the request of Louis Tavaglione & Evin C Cloninger

Jack A. Ross
County Recorder
Fee \$5.00 By O.G. Arment
Deputy



I hereby certify that this map is not a subdivision as defined by the business and Professions Code of the State of California, since it represents the division of two individually owned properties into not more than four parcels each

Donald J. McKee
Licensed Land Surveyor # 1825

SURVEYORS CERTIFICATE

This map correctly represents a survey made under my direction in conformance with the requirements of Chapter 15 of Division 3 of the Business and Professions Code at the request of Louis Tavaglione and Evin C Cloninger

Donald J. McKee
Licensed Land Surveyor # 1825

COUNTY SURVEYOR CERTIFICATE

This map has been examined for conformance with the requirements of Chapter 15 of Division 3 of the Business and Professions Code this 1st day of April 1958

A.C. KEITH County Surveyor
by G.T. Worsley
Asst.

Note: Bearings are based on the center line of Dufferin Ave. as being N56°00'E, shown on M.B. 1 pg. 39 Rec. of Riverside County, Calif
1/4" Iron pipe tagged L.S. 1825 set at all corners unless otherwise noted

RS 28/1