

287

Filed for record at request of County Surveyor this 28th day of April, 1958, at 3:35 P.M. in Book 28 of Record of Survey of Page 7  
Fee \$5.00  
No. 30610  
JACK A. ROSS County Recorder  
By O.A. Mead Deputy

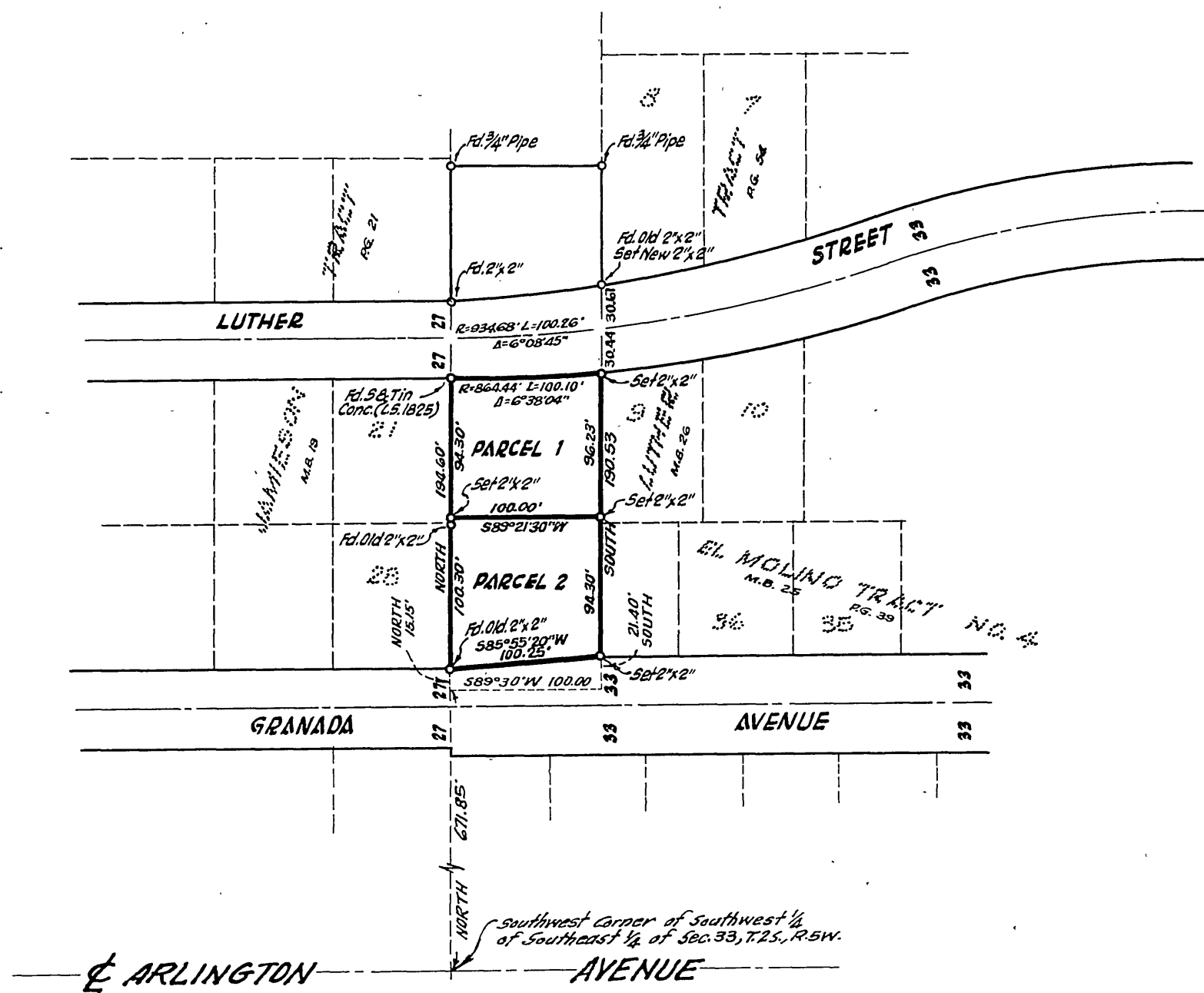
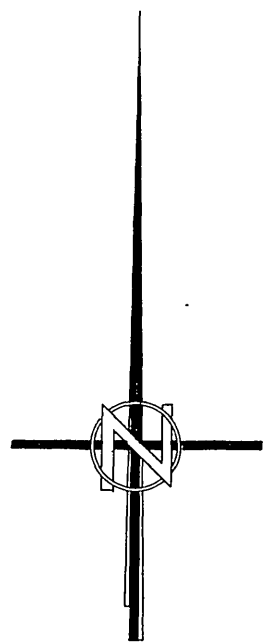
IN THE CITY OF RIVERSIDE

# RECORD OF SURVEY

OF A PORTION OF THE S.W. 1/4 OF S.E. 1/4 OF SECTION 33 T.2.S , R.5W. S.B.B.&M.  
FEBRUARY, 1958

J.F. DAVIDSON, CIVIL ENGINEER

SCALE: 1" = 100'



### ENGINEER'S CERTIFICATE

This map correctly represents a survey made by me or under my direction in conformance with the requirements of Chapter 15 of Division 3 of the Business and Professions Code of the request of Lowell Orr.

J.F. Davidson  
Registered Civil Engineer No. 862

### COUNTY SURVEYOR'S CERTIFICATE

This map has been examined for conformance with the requirements of Chapter 15 of Division 3 of the Business and Professions Code this 25th day of April, 1958.

A.C. Keith  
County Surveyor

### CITY COUNCIL'S CERTIFICATE

This Record of Survey Map was approved by the City Council of the City of Riverside, California on the 27th day of April, 1958.

J. F. Davidson  
City Clerk of the City of Riverside, California

by C. T. Worsley  
Deputy

### ENGINEER'S NOTE

Bearings are based on the easterly boundary of JAMIEBON TRACT, M.B. 19/21 Rec. of Riv. Co., Calif., as being North.

2-218