

90E-5

# RECORD OF SURVEY

Being a Survey of a Portion of Lot 40 and 41 Alamo Tract as shown by Map on file in Book 9 of Maps Page 15 Records of Riverside Co. Calif.

March 1958

Scale 1in=50ft.

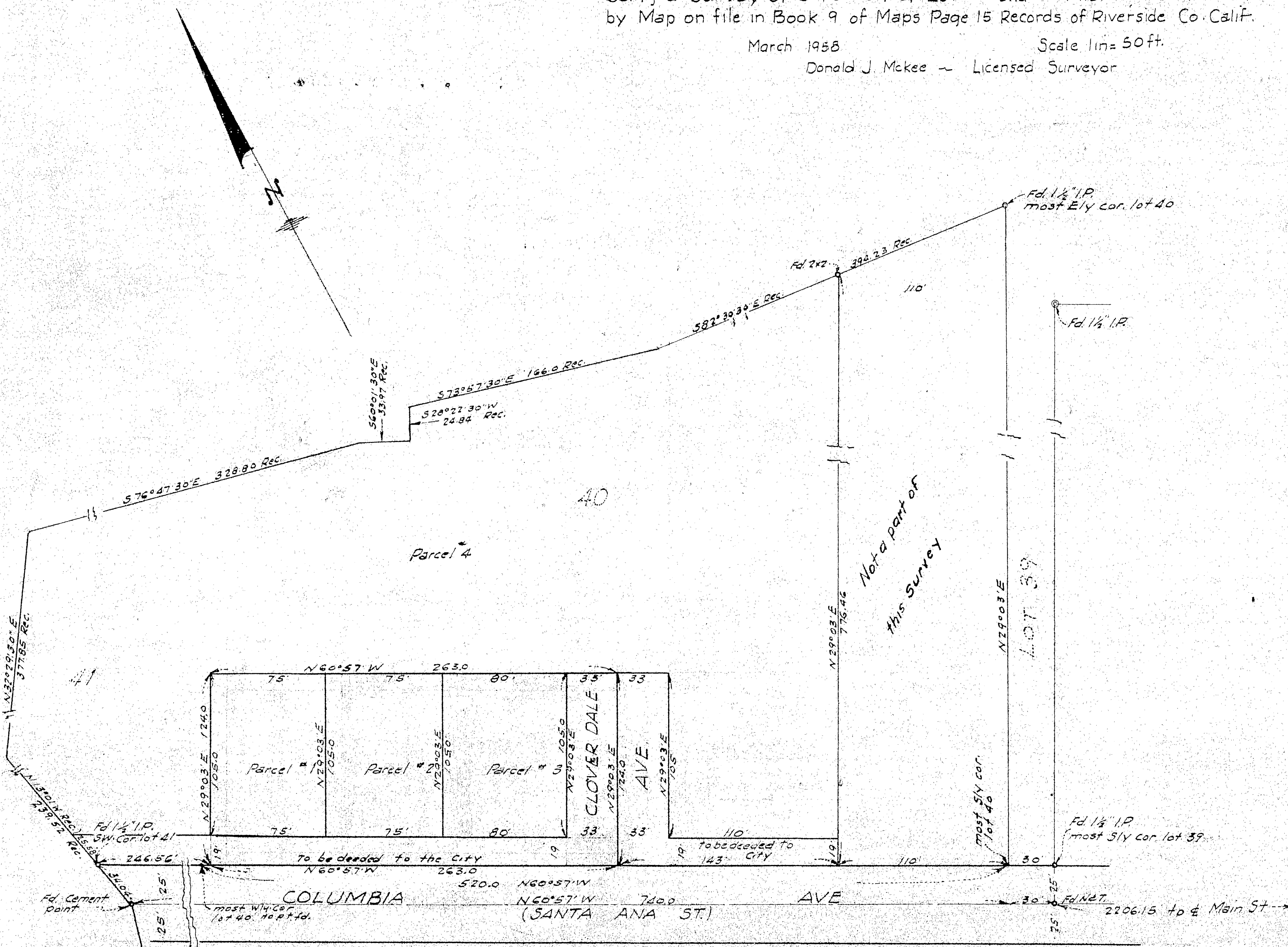
Donald J. McKee - Licensed Surveyor

Filed For Record at Request of County Surveyor  
This 20th day of May 1958 at 3:00 P.M.  
In Book 28 of Record of Survey at Page 19

Fee \$5.00

Jack A. Ross  
County Recorder  
By O.O. Great  
Deputy

No 36770



This map correctly represents a survey made by me in conformance with the requirements of Chapter 15 of Division 3 of the business and professions code at the request of Jackson Turner

Donald J. McKee  
Donald J. McKee L.S. 1875

Note: Bearings are based on

2x2 Redwood Stake Tagged L.S. 1875 Set at all lot corners.  
Monuments found as noted

This map has been examined for conformance with the requirements of chapter 15 of Division 3 of the business and professions code this 19th day of May 1958

A.C. Keith  
County Surveyor  
by T. Worsley  
Deputy

This Record of Survey map was approved by the City Council of the City of Riverside Calif. on the 13th day of May 1958

City Clerk of the City of Riverside

90E-5

S-305