

IN THE CITY OF RIVERSIDE

RECORD OF SURVEY

of Lot 4 in Block 80 of Arlington Heights as shown by map on file in Book 11 of Maps at pages 20 and 21 thereof, Records of San Bernardino County, California.

— BY —

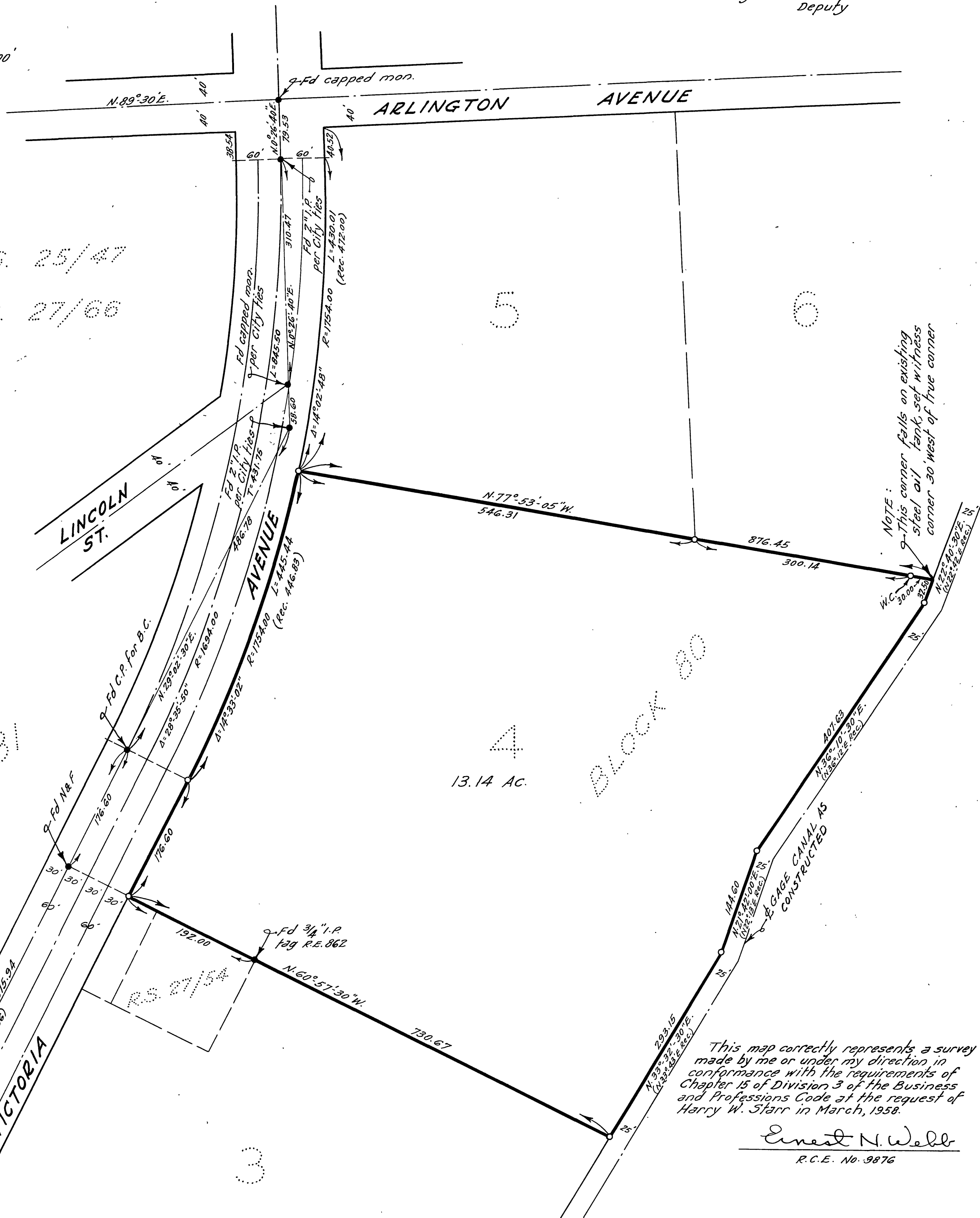
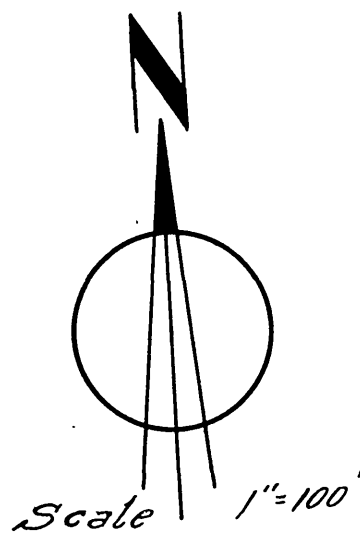
ALBERT A. WEBB ASSOCIATES
CIVIL ENGINEERS
RIVERSIDE CALIFORNIA
APRIL 1958

Filed for record at request of County Surveyor this 30 day of June 1958 at 2:45 P.M. in Book 28 of Record of Survey at page 37.

Fee \$5.00
No. 46678

Jack A. Ross
County Recorder

By O.A. [Signature]
Deputy



R.S. 25/47
R.S. 27/66

This map correctly represents a survey made by me or under my direction in conformance with the requirements of Chapter 15 of Division 3 of the Business and Professions Code at the request of Harry W. Starr in March, 1958.

Ernest N. Webb
R.C.E. No. 9876

ENGINEER'S NOTES:-
Basis of Bearings is the centerline of VICTORIA AVE. taken as N.29°02'30"E., as same is shown on map on file in Book 27 of Records of Survey at page 66 thereof, Records of Riverside County, California...
Found monuments as noted at all points shown thus •
Set 3/4" I.P. tagged R.E. 9876 at all points shown thus ○

This map has been examined for conformance with the requirements of Chapter 15 of Division 3 of the Business and Professions Code this 30th day of June 1958.

A.C. Keith
County Surveyor
By C.T. Worsley
Deputy