

IN THE CITY OF RIVERSIDE, CALIFORNIA

RECORD OF SURVEY

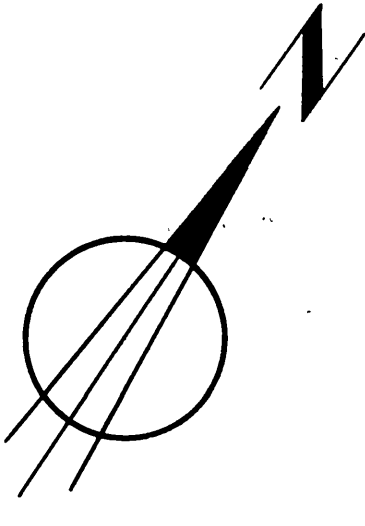
of Lot 14 and a portion of Lot 15 in Block 6 of Orange Acres as recorded in Book 13 of Maps at page 7 thereof, records of Riverside County, California

Filed for record at request of County Surveyor this 24th day of July 1958 at 4:30 P.M. in Book 24 of Record of Survey at page 36 Fee \$5.00 No. 50079

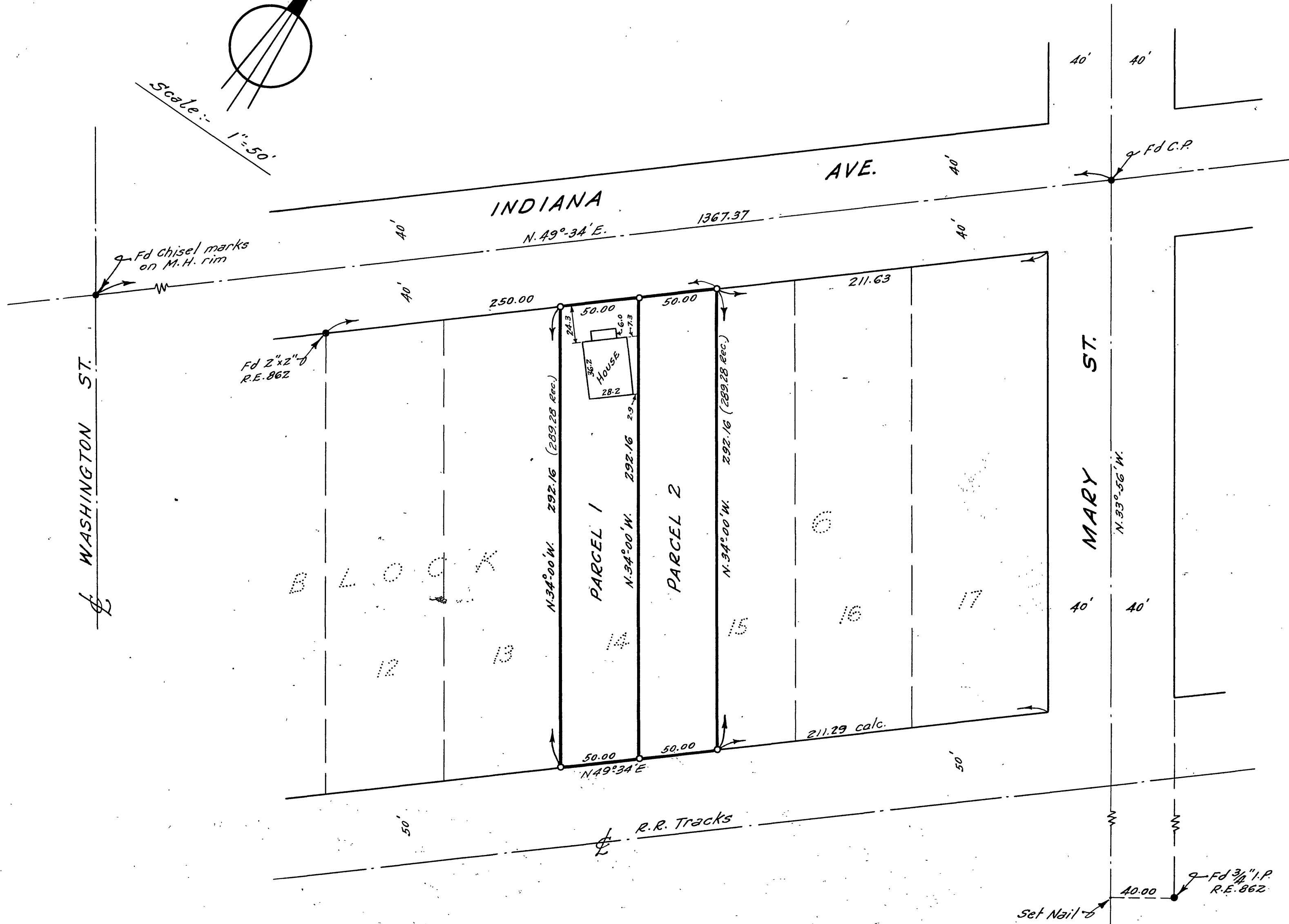
Jack A. Ross, County Recorder by O.A. Mead Deputy

~ BY ~

ALBERT A. WEBB ASSOCIATES
CIVIL ENGINEERS
RIVERSIDE CALIFORNIA
MAY 1958



Scale: 1"=50'



This map correctly represents a survey made by me or under my direction in conformance with the requirements of Chapter 15 of Division 3 of the Business and Professions Code at the request of Mrs. Maude Jones in May of 1958.

Ernest N. Webb
R.C.E. 9876

ENGINEER'S NOTES:-

Basis of Bearings is the centerline of INDIANA AVE., taken as N. 49° 34' E., as same is shown on map of ORANGE ACRES recorded in Book 13 of Maps at page 7 thereof, records of Riverside County, California.

Found monuments as noted at all points shown thus •
Set 3/4" Iron Pipe tagged R.E. 9876 at all points shown thus ○

This map has been examined for conformance with the requirements of Chapter 15 of Division 3 of the Business and Professions Code this 21st day of July 1958.

A.C. KEITH, County Surveyor
By C.T. Worsley Deputy

This Record of Survey map was approved by the City Council of the City of Riverside, California on the 8 day of July 1958.

Virginia Strohecker
City Clerk of the City of Riverside, California