

IN THE CITY OF RIVERSIDE, CALIFORNIA

# RECORD OF SURVEY

of a portion of Lot 9 in Block 14 of R.L.&I. Co. Lands per Book 1 of Maps at page 70 thereof, Records of San Bernardino County, California

— BY —

ALBERT A. WEBB ASSOCIATES  
CIVIL ENGINEERS  
MARCH 1958

This map correctly represents a survey made by me or under my direction in conformance with the requirements of Chapter 15 of Division 3 of the Business and Professions Code at the request of Harry Kriz in February 1958.

Ernest N. Webb  
R.C.E. 9876

ENGINEER'S NOTES:-  
Basis of Bearings is the centerline of ADAMS STREET, taken as N. 33° 59' W, as same is shown by map on file in Book 22 of Records of Survey at page 70 thereof, Records of Riverside County, California.

Found monuments as noted at all points shown thus ●  
Set 3/4" Iron Pipe tagged R.E. 9876 at all points shown thus ○  
Set 2"x2" Redwood stakes tagged R.E. 9876 at all lot corners unless otherwise noted.

This map has been examined for conformance with the requirements of Chapter 15 of Division 3 of the Business and Professions Code this 31<sup>st</sup> day of July 1958.

G.C. Keith  
County Surveyor

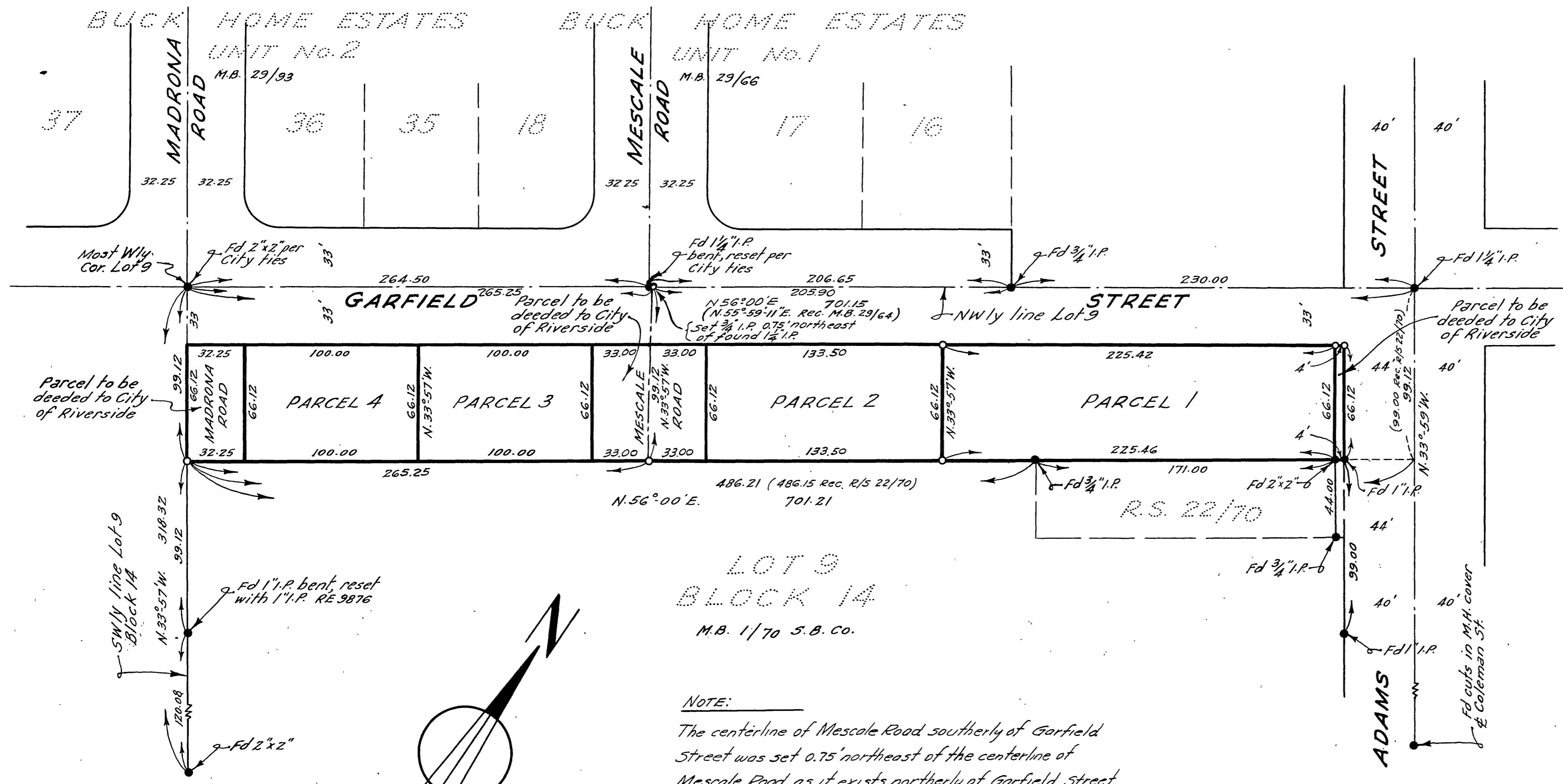
This Record of Survey was approved by the City Council of the City of Riverside, California on the 2<sup>nd</sup> day of July 1958.

Virginia S. Stalacker  
City Clerk of the City of Riverside, California

55443

Filed for record this 1<sup>st</sup> day of August 1958 at 3:10 P.M. in Book 28 at page 59, at the request of County Surveyor

Fee \$5.00  
Jack A. Ross  
County Recorder  
By O.A. Stuart Deputy



LOT 9  
BLOCK 14  
M.B. 1/70 S.B. Co.

NOTE:  
The centerline of Mescale Road southerly of Garfield Street was set 0.75' northeast of the centerline of Mescale Road as it exists northerly of Garfield Street at the request of the City of Riverside Planning Commission.

