

28/61

Filed for record at request of County Surveyor this 20th day of August, 1958, at 3:40 P. M. in Book 23 of Record of Survey at page 4.
Fee \$5.00
No. 60071
JACK A. ROSS County Recorder
By O.A. N. Deputy

IN THE CITY OF RIVERSIDE

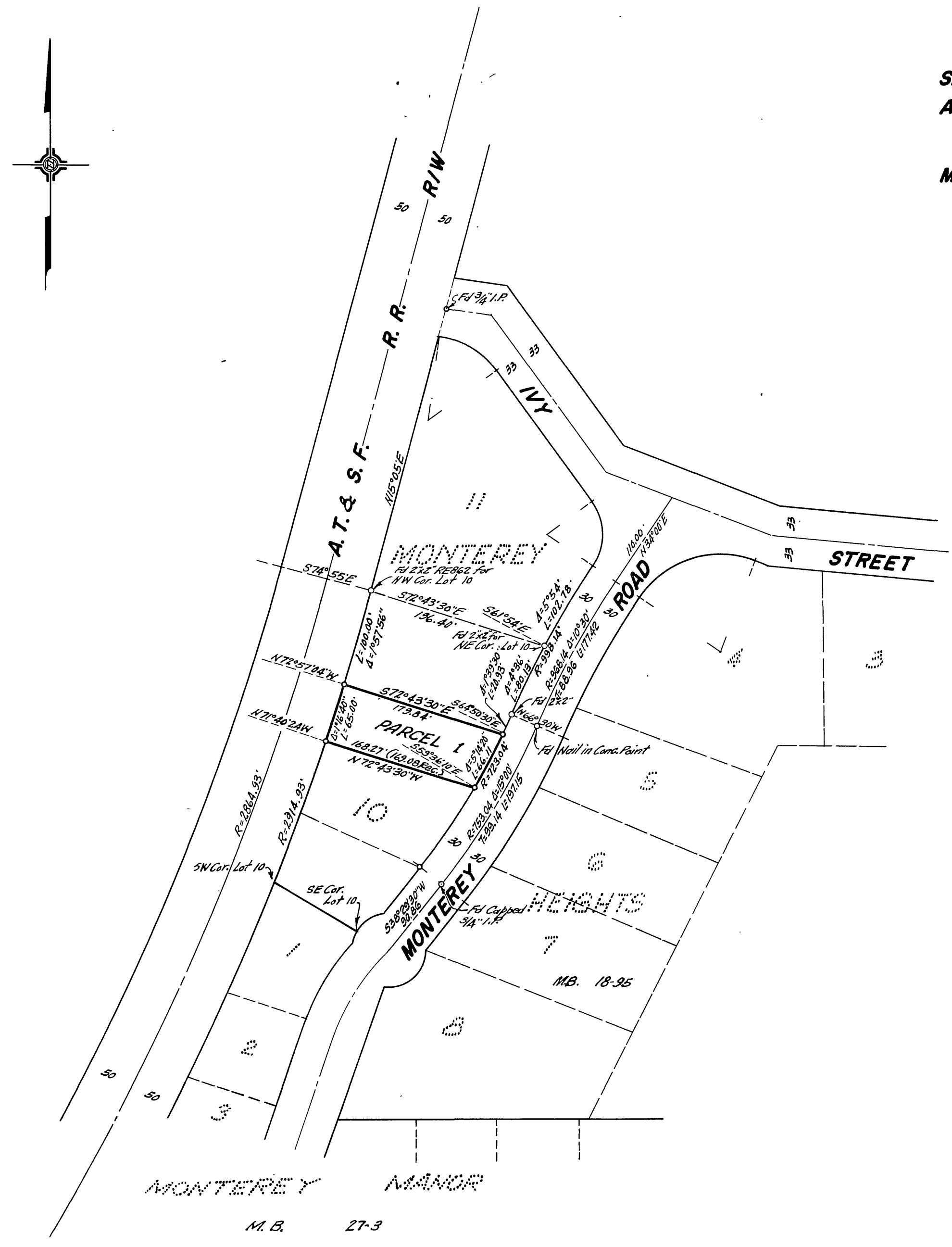
RECORD OF SURVEY

SHOWING A SURVEY OF A PORTION OF LOT 10 OF MONTEREY HEIGHTS AS RECORDED IN MAP BOOK 18 AT PAGE 95, RECORDS OF RIVERSIDE COUNTY, CALIFORNIA.

MAY 1958

J.F. DAVIDSON, C.E.

SCALE 1" = 100'



CITY COUNCIL'S CERTIFICATE

This Record of Survey map was approved by the City Council of the City of Riverside, California, on the 15th day of July, 1958.
Virginia S. Strickland
City Clerk of the City of Riverside, California.

ENGINEER'S CERTIFICATE

This map correctly represents a survey made by me or under my direction in conformance with the requirements of Chapter 15 of Division 3 of the Business and Professions Code at the request of ROBERT JACKSON.
J. F. Davidson
Registered Engineer No. 862

ENGINEER'S NOTE

Bearings are based on the center line of MONTEREY ROAD being S38°29'30"W as shown on map of "MONTEREY HEIGHTS", M.B. 18/95, Rec. Riv. Co., Calif.
Set 2"x2" Redwood stake, painted white, tagged RE-862 at all points shown this: — unless otherwise noted.

COUNTY SURVEYOR'S CERTIFICATE

This map has been examined for conformance with the requirements of Chapter 15 of Division 3 of the Business and Professions Code this 20th day of August, 1958.
A.C. KEITH County Surveyor
By *E. T. Worsley* Deputy