

28/63
#420

IN THE CITY OF RIVERSIDE

RECORD OF SURVEY

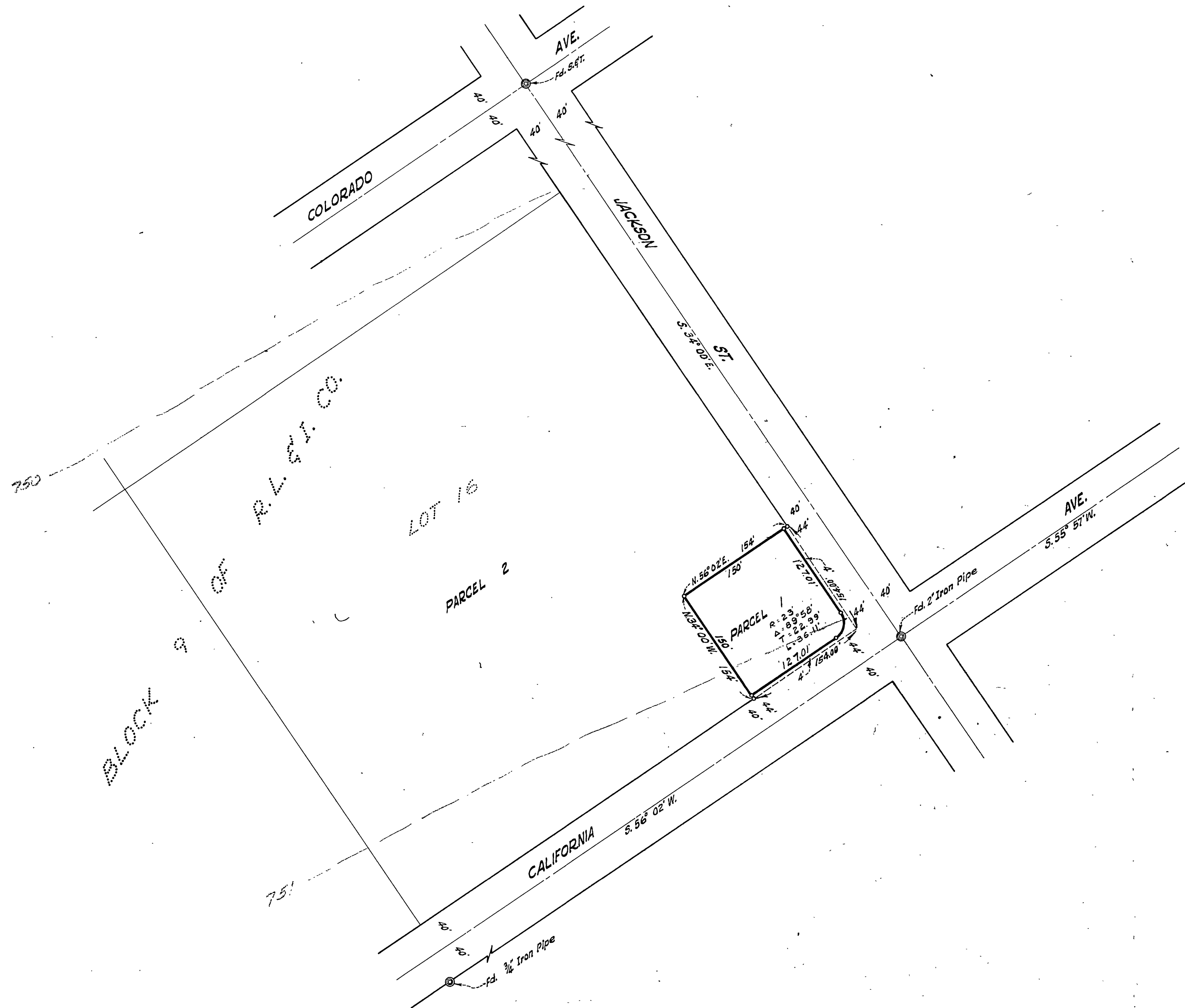
SHOWING A SURVEY OF A PORTION OF LOT 16, BLOCK 9 OF THE RIVERSIDE LAND AND IRRIGATING COMPANY, RECORDED IN MAP BOOK 1 AT PAGE 70, RECORDS OF SAN BERNARDINO COUNTY, CALIFORNIA.

JUNE 1958

SCALE 1" = 100'

J. F. DAVIDSON, C.E.

Filed for Record at request of County Surveyor this 21st day of August, 1958 at 4:15 P.M. in Book 2 of Record of Survey of Page 63.
Fee \$5.00 No. 60582
JACK A. ROSS County Recorder
By O.A. Wheat Deputy



SURVEY MADE AT THE REQUEST OF HOME OIL COMPANY

This Record of Survey map was approved by the City Council of the City of Riverside, California on this 19th day of August, 1958.
Virginia J. Strabaker
City Clerk of the City of Riverside, California.

ENGINEER'S CERTIFICATE

This map correctly represents a survey made by me or under my direction in conformance with the requirements of Chapter 15 of Division 3 of the Business and Professions Code of the request of August, 1958.

J. F. Davidson
Registered Civil Engineer No. 362

ENGINEER'S NOTE

Bearings are based on the Center Line of "JACKSON STREET" being S. 34° 00' E. as shown on map of VILLA d' ESTE, M.B. 30, Pg. 35, Records of Riverside County, California.

o indicates 2x2' Redwood Stake, painted white and tagged R.E. 862, set.

COUNTY SURVEYOR'S CERTIFICATE

This map has been examined for conformance with the requirements of Chapter 15 of Division 3 of the Business and Professions Code this 21st day of August, 1958.

A.C. KEITH County Surveyor

By G.T. Worsley Deputy