

# IN THE CITY OF RIVERSIDE RECORD OF SURVEY

Of a Portion of Lot 45 in Block 12, Village of Arlington, Map Book 1 page 62 Records of San Bernardino County, California.

RIVERSIDE ENGINEERING COMPANY, Inc.

SCALE 1"=50'

JUNE 1958.

FILED FOR RECORD AT REQUEST OF COUNTY SURVEYOR THIS 5th DAY OF Sept 1958 AT 11:05 A. M. IN BOOK 29 OF RECORD OF SURVEY AT PAGE 66

FEE \$5.00

Jack A. Ross  
COUNTY RECORDER

NO. 6195

BY O. A. Deat  
DEPUTY

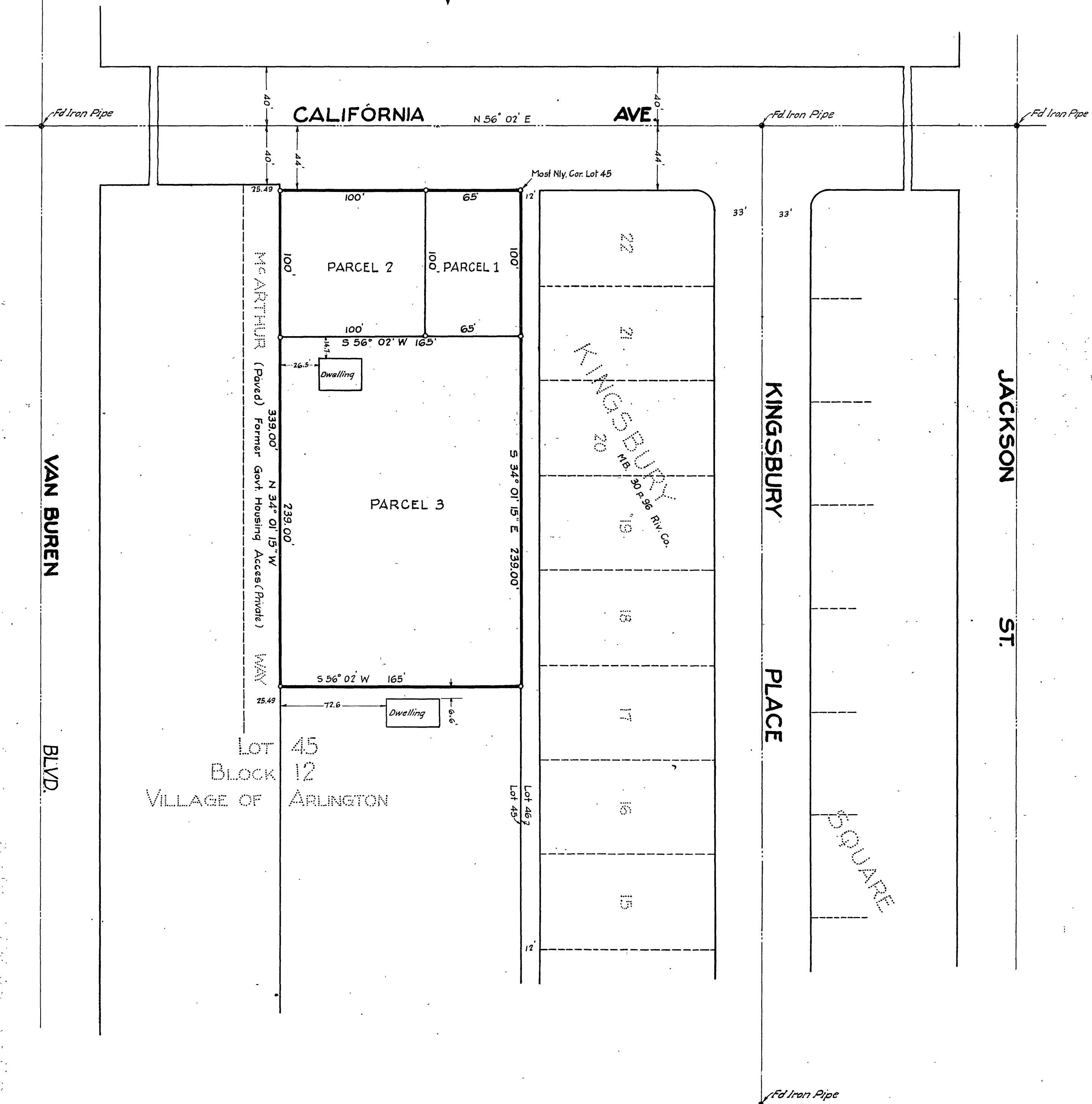
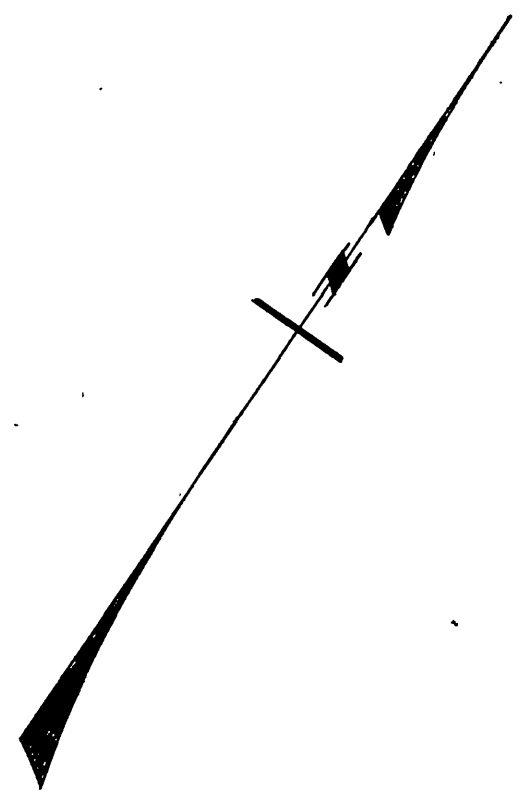
This map has been examined for conformance with the requirements of Chapter 15 Division 3 of the Business and Professions Code this 3rd day of September 1958.

A. C. KEITH  
County Surveyor, Riverside County, California.

By G. T. Worsley  
Deputy

This Record of Survey map was approved by the City Council of the City of Riverside on the 22nd day of July 1958.

Virginia J. Stricker  
City Clerk of the City of Riverside, California.



This map correctly represents a survey made under my supervision in conformance with the requirements of Chapter 15 of Division 3 of the Business and Professions Code in June 1958 at the request of E. E. Pearson.

F. B. Smart  
Reg. Civil Engineer No 4210, Calif.

NOTE  
Bearings are based on the center line of California St. shown on map of Kingsbury Square, MB. 30 page 96 to be N 56° 02' E.  
Monuments found shown thus •  
2x2 stakes set shown thus ○