

28/73

IN THE CITY OF RIVERSIDE

# RECORD OF SURVEY

BEING A SURVEY OF LOTS 1 AND 2 AS SHOWN ON MAP OF EL RIO RANCHO, ON FILE IN MAP BOOK 29, AT PAGE 42 THEREOF, RECORDS OF RIVERSIDE COUNTY, CALIFORNIA.

AUGUST, 1958

SCALE 1" = 40'

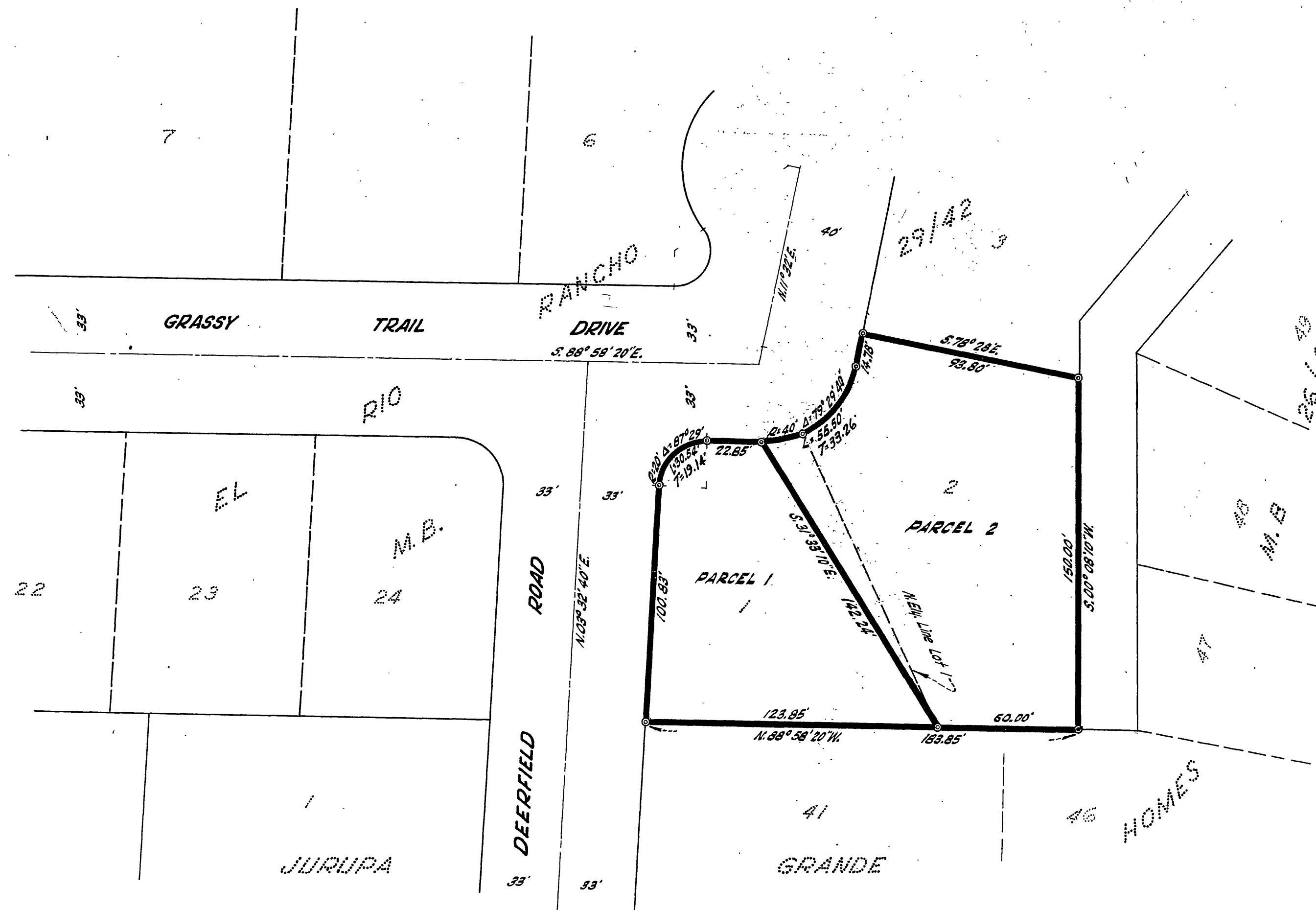
J.F. DAVIDSON, C.E.

Filed for Record at request of County Surveyor this 5th day of Sept., 1958, at 10:25 A.M. in Book 28 of Record of Survey of Page 73.

Fee \$5.00 No. 64088

JACK A. ROSS County Recorder

By O.A. West Deputy



Survey made at the request of Robert Cook.

This Record of Survey map was approved by the City Council of the City of Riverside, California on the 23rd day of July, 1958.

Virginia Strohacker  
City Clerk of the City of Riverside, California

### ENGINEER'S CERTIFICATE

This map correctly represents a survey made by me or under my direction in conformance with the requirements of Chapter 15 of Division 3 of the Business and Professions Code at the request of Robert Cook in July, 1958.

J.F. Davidson  
Registered Civil Engineer No. 862

### ENGINEER'S NOTE

Bearings are based on the center line of "Deerfield Road" as being N. 03° 32' 40" E. as shown on map of "El Rio Rancho" in M.B. 29/42, Records of Riverside County, Calif.

Found 3/4" iron pipe, tagged R.E. 862, at all points shown thus

### COUNTY SURVEYOR'S CERTIFICATE

This map has been examined for conformance with the requirements of Chapter 15 of Division 3 of the Business and Professions Code this 3rd day of Sept. 1958.

A.C. KEITH County Surveyor

By C.T. Worsley Deputy