

28/76  
MS. 4424

IN THE CITY OF RIVERSIDE

# RECORD OF SURVEY

OF A PORTION OF LOT 27 OF THE LANDS OF THE SOUTHERN CALIFORNIA COLONY ASSOCIATION AS SHOWN IN MAP BOOK 7, PAGE 3 RECORDS OF SAN BERNARDINO COUNTY, CALIFORNIA

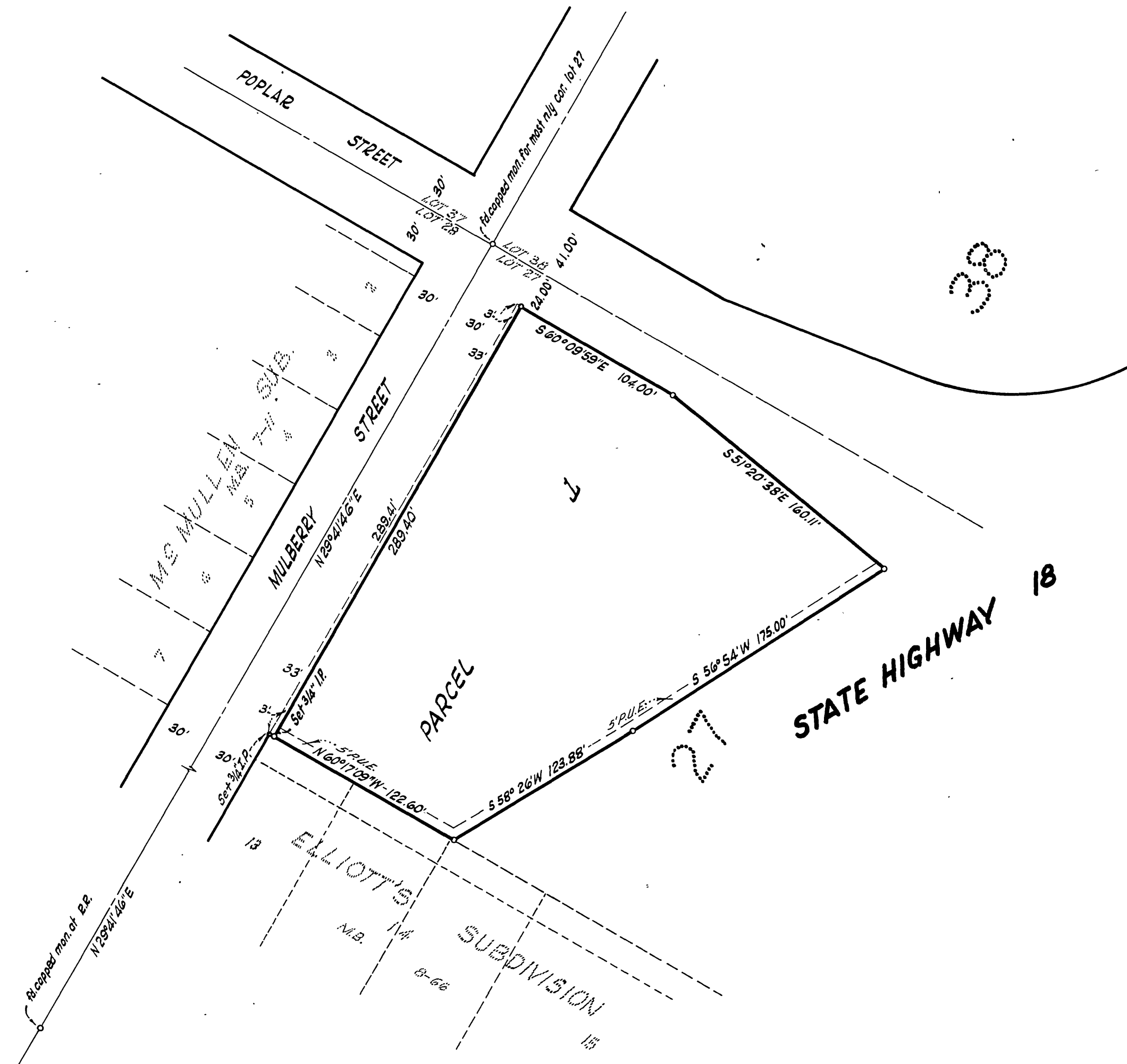
JULY, 1958

J. F. DAVIDSON, CIVIL ENGINEER

SCALE: 1"=60'

Filed for Record at request of County Surveyor this 19th day of Sept., 1958, at 10:45 A.M. in Book 7 of Record of Survey of Page 76.  
Fee \$5.00 No. 67419  
JACK A. ROSS County Recorder  
By O.A. Wheat Deputy

MADE AT THE REQUEST OF JOHN COTE



### ENGINEER'S CERTIFICATE

This map correctly represents a survey made by me or under my direction in conformance with the requirements of Chapter 15 of Division 3 of the Business and Professions Code at the request of John Cote in July, 1958.

*J. F. Davidson*  
Registered Civil Engineer No. 862

### ENGINEER'S NOTE

Basis of bearings is  $N 29^{\circ} 41' 46'' E$ , a grid azimuth of the California Coordinate System, Zone II, for the center line of Mulberry Street, as shown on sheet No. 417045 of the State Highway Right of Way Map for III-RIV-43-RIV, Dated Aug. 8, 1953. Set 2x2 redwood stakes painted white and tagged 'R.E. 862' shown thus unless otherwise noted. Found Flagged nails and set 2x2 at all angle points on highway right of way.

### CITY COUNCIL'S CERTIFICATE

This Record of Survey map was approved by the City Council of the City of Riverside, California on this 16th day of Sept., 1958.

*Virginia J. Anderson*  
City Clerk of the City of Riverside, California

### COUNTY SURVEYOR'S CERTIFICATE

This map has been examined for conformance with the requirements of Chapter 15 of Division 3 of the Business and Professions Code this 19th day of September, 1958.

A.C. KEITH County Surveyor  
By *C. T. Worsley* Deputy