

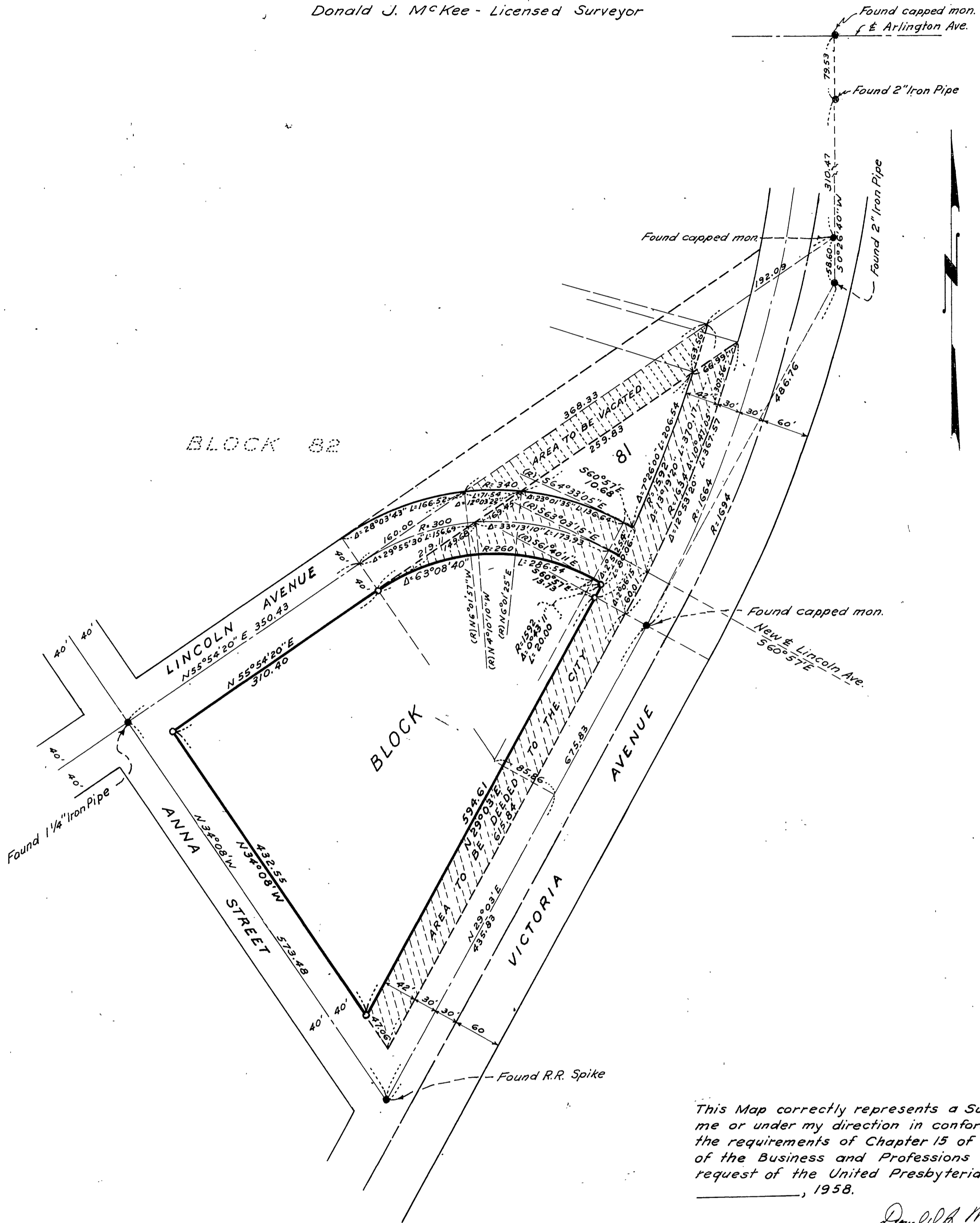
IN THE CITY OF RIVERSIDE
RECORD OF SURVEY

OF BLOCK 81, ARLINGTON HEIGHTS BY MAP FILED IN
 BOOK 11 OF MAPS AT PAGES 21 & 22, RECORDS OF SAN
 BERNARDINO COUNTY, CALIFORNIA

March 1958 Scale 1 in. = 100 ft.
 Donald J. McKee - Licensed Surveyor

Filed for Record at the request of
 County Surveyor this 30th day of
 October 1958, at 4:45 P. M. in
 Book 78 of Record of Survey
 at Page 19.

Fee \$5.00
 No. 71010 Jack A. Ross
 County Recorder
 By O. A. Mead
 Deputy.



This Map correctly represents a Survey made by
 me or under my direction in conformance with
 the requirements of Chapter 15 of Division 3,
 of the Business and Professions Code at the
 request of the United Presbyterian Church in
 _____, 1958.

Donald J. McKee
 Licensed Land Surveyor No. 1825

This Map has been examined for conformance
 with the requirements of Chapter 15 of Division 3
 of the Business and Professions Code this
 3rd day of October 1958.

A.C. Keith
 County Surveyor
 By T. Worsley
 Deputy

This Record of Survey map was approved by the City
 Council of the City of Riverside, Calif on the 2nd day
 of Sept. 1958

Virginia J. Strober
 City Clerk of the City of Riverside, Calif.

Notes
 The bearing N 34° 08' W of the center line of ANNA STREET
 shown on Map of Sun Gold Terrace No. 12, filed in Book 29 of
 Maps at pages 35 & 36, Records of Riverside County, Calif.
 was used as the Basis of Bearings upon this Map.
 Found Monuments as noted shown thus ●
 Set 3/4" Iron Pipe tagged L.S. 1825 shown thus ○