

IN THE CITY OF RIVERSIDE

# RECORD OF SURVEY

OF A PORTION OF LOT 1 OF NON-RESIDENTIAL "M-2" GENERAL MANUFACTURING SUBDIVISION NO. M-12  
MAP BOOK 33 PAGE 67 RECORDS OF RIVERSIDE COUNTY, CALIFORNIA AND A PORTION OF THE NORTH-  
WEST ONE-QUARTER OF SECTION 24, TOWNSHIP 2 SOUTH, RANGE 5 WEST, SAN BERNARDINO. BASE AND  
MERIDIAN.

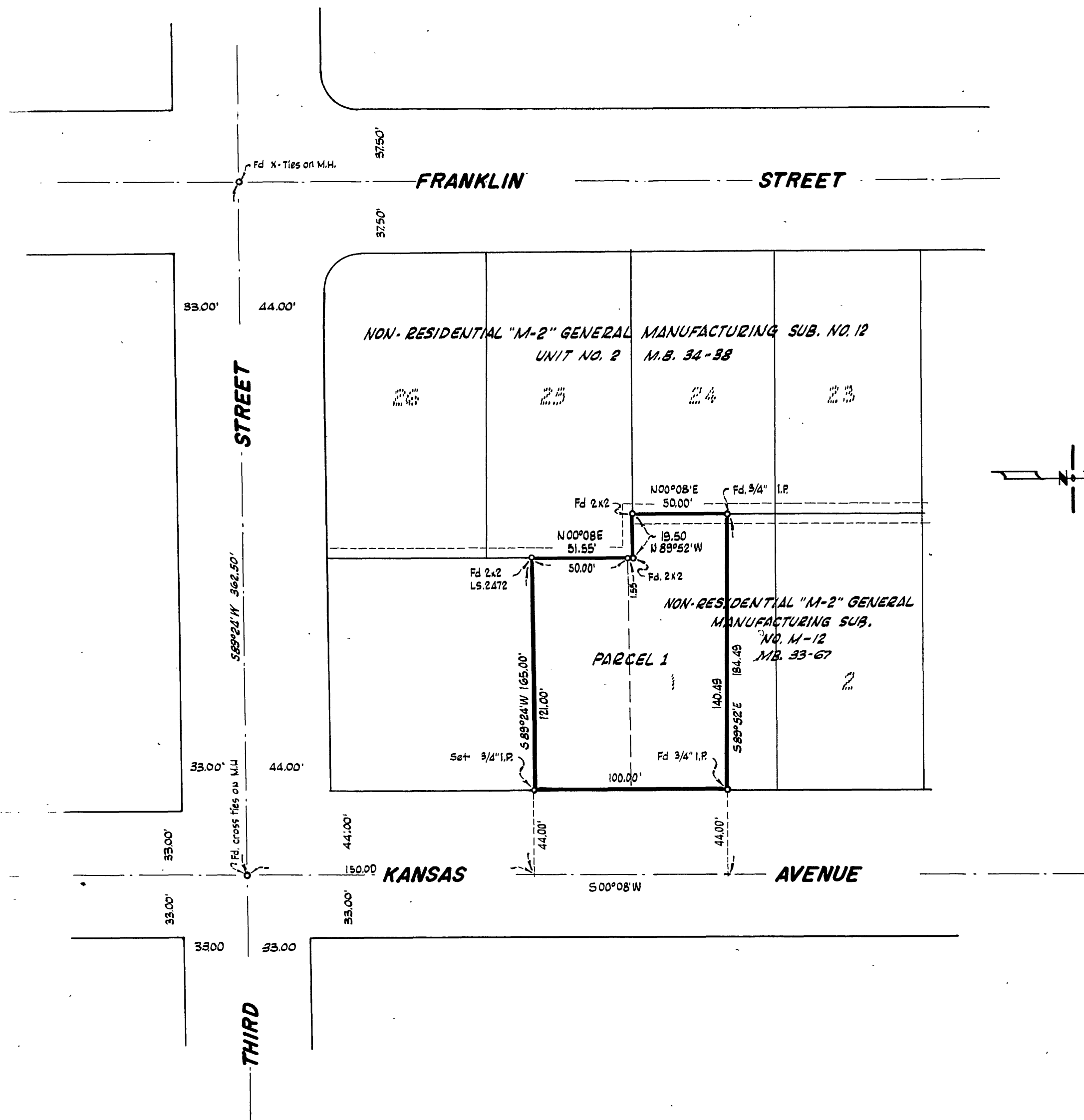
OCTOBER, 1958

J.F. DAVIDSON, CIVIL ENGINEER

SCALE : 1" = 50'

Filed for Record at request of County Surveyor this 17th day of  
Nov. 1958 at 12:30 P.M. in Book 29  
of Record of Survey of Page 1  
Fee \$ 5.00 No. 2859  
JACK A. ROSS County Recorder  
By O.A. Wheat Deputy

MADE AT THE REQUEST OF RUSSELL WALLING



This Record of survey Map was approved by the City Council of the City of  
Riverside, California on the 10 day of Nov., 1958.  
Wm. J. Libalada  
City Clerk of the City of Riverside, California

### ENGINEER'S CERTIFICATE

This map correctly represents a survey made by me or under my direction in con-  
formance with the requirements of Chapter 15 of Division 3 of the Business  
and Professions Code at the request of RUSSELL WALLING  
in Oct. 22, 1958

J. F. Davidson  
Registered Civil Engineer No. 862

### ENGINEER'S NOTE

Bearings are based on the center line of KANSAS AVE. being S00°08'W as shown  
on map of NON-RESIDENTIAL "M-2" GENERAL MANUFACTURING SUBDIVISION  
No. M-12, M.B. 33-67 records of Riverside County, California.

### COUNTY SURVEYOR'S CERTIFICATE

This map has been examined for conformance with the requirements of Chapter 15  
of Division 3 of the Business and Professions Code this 12th day of  
November 1958

A. C. KEITH County Surveyor

By G. T. Worsley Deputy