

29/27

IN THE CITY OF RIVERSIDE RECORD OF SURVEY

OF A PORTION OF THE N.W. 1/4 OF THE S.E. 1/4 OF SEC. 33, T.2S., R.5W.
S.B.B. & M.

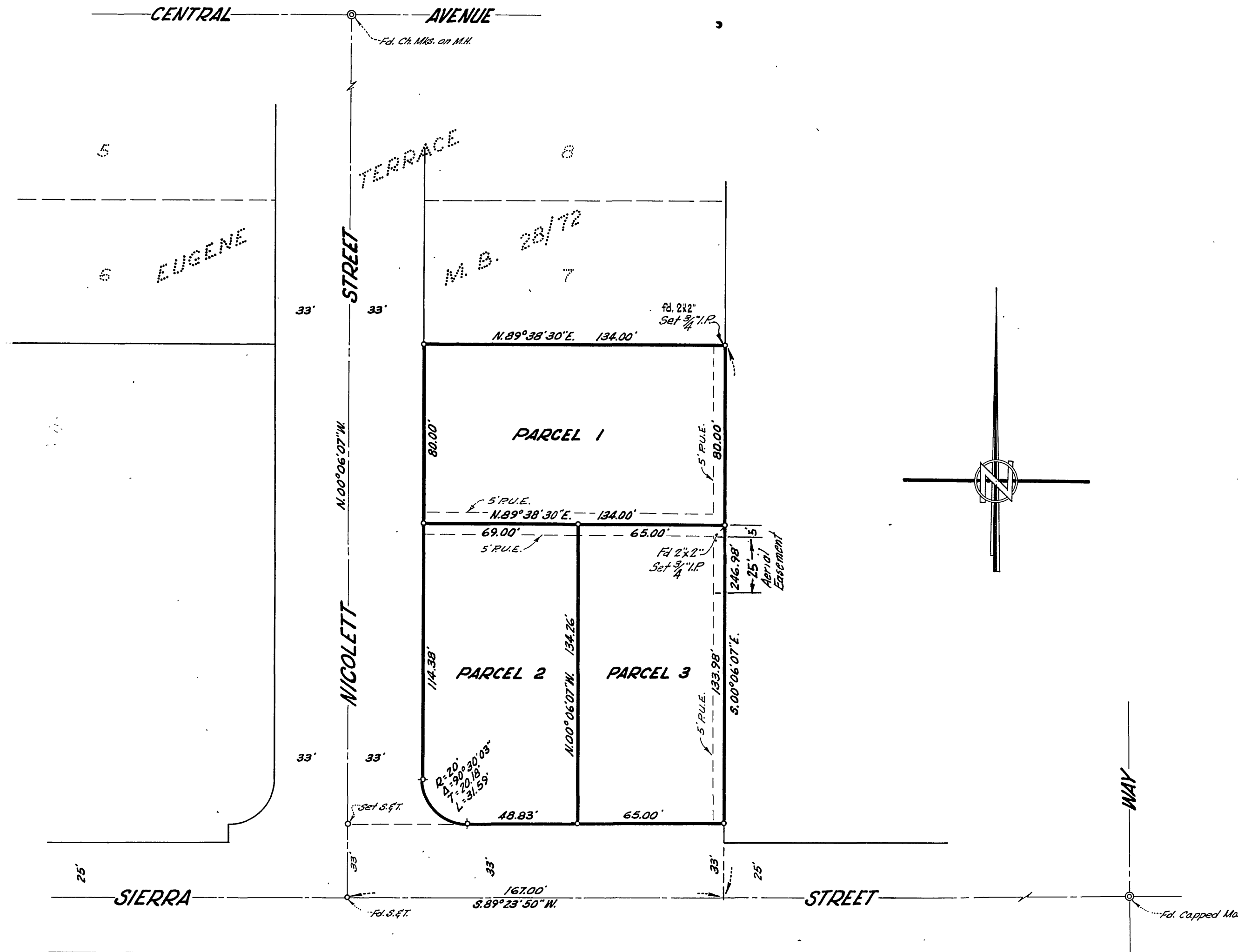
SEPT. 1958

J.F. DAVIDSON, C.E.

SCALE: 1" = 40'

Filed for Record at request of County Surveyor this 17th day of
NOV., 1958, at 12:34 P.M. in Book 29
of Record of Survey of Page 2. 82860
Fee \$5.00 No. _____
JACK A. ROSS County Recorder
By O.A. Swat Deputy

Made at the request of Martin J. Kaplan



This Record of Survey map was approved by the City Council of the City of Riverside, California on the 10th day of ~~Feb~~, 1958.

Virginia J. Strickland
City Clerk of the City of Riverside, California

ENGINEER'S CERTIFICATE

This map correctly represents a survey made by me or under my direction in conformance with the requirements of Chapter 15 of Division 3 of the Business and Professions Code at the request of MARTIN J. KAPLAN in 1958.

J. F. Davidson
Registered Civil Engineer No. _____

ENGINEER'S NOTE

Bearings are based on the center line of SIERRA STREET being S 89° 23' 50" W as shown on map of Eugene Terrace, Map Book 28 Page 72 Records of Riverside County, California. Set 3/4" Iron Pipe, tagged R.E. 862, at all points shown thus unless otherwise noted.

COUNTY SURVEYOR'S CERTIFICATE

This map has been examined for conformance with the requirements of Chapter 15 of Division 3 of the Business and Professions Code this 12th day of NOVEMBER, 1958.

A.C. KEITH County Surveyor
By G. T. Worsley Deputy