

29/29

IN THE CITY OF RIVERSIDE

RECORD OF SURVEY

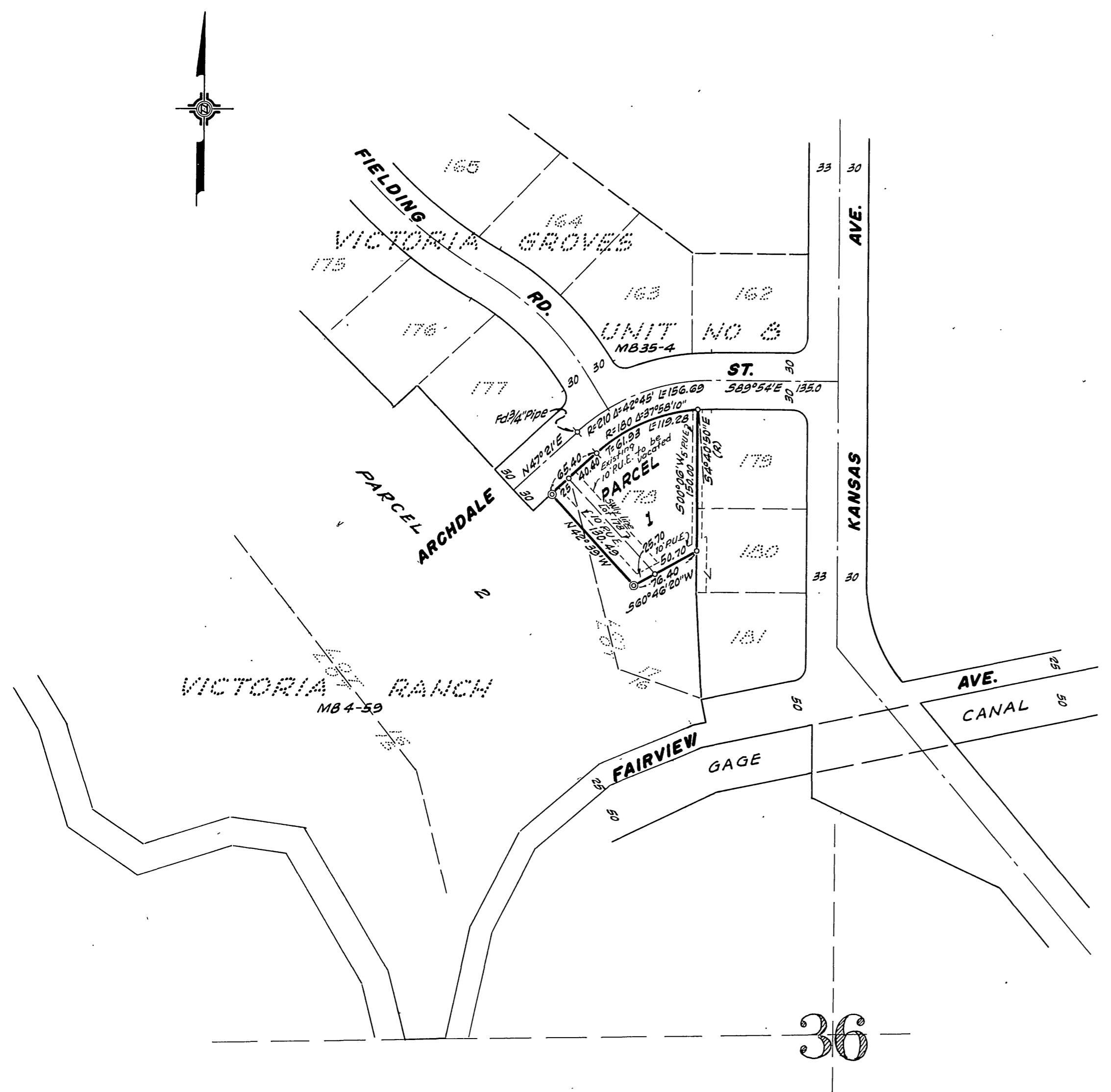
SHOWING A SURVEY OF LOT 178 OF VICTORIA GROVES UNIT NO. 8 AS SHOWN IN MAP BOOK 35, PAGE 4, REC. RIV. CO., CALIF. AND A PORTION OF LOTS 16 AND 17 OF VICTORIA RANCH AS SHOWN IN MAP BOOK 4, PAGE 59, REC. RIV. CO., CALIF.

NOV. 1958

J. F. DAVIDSON, C. E.

SCALE 1"=100'

Filed for Record at request of County Surveyor this 13th day of JANUARY, 1958 at 4:26 P.M. in Book 29 of Record of Survey of Page 29
Fee \$1.00 No. _____
JACK A. ROSS County Recorder
By O. A. Wheat Deputy



This Record of Survey map was approved by the City Council of the City of Riverside, California on the 23rd day of December, 1958.

Virginia J. Stricker
City Clerk of the City of Riverside, California.

ENGINEER'S CERTIFICATE

This map correctly represents a survey made by me or under my direction in conformance with the requirements of Chapter 15 of Division 3 of the Business and Professions Code at the request of JOHNSON, INC. in July, 1958.

J. F. Davidson
Registered Civil Engineer No. 862

ENGINEER'S NOTE

Bearings are based on the center line ARCHDALE STREET being $S 89^{\circ} 54' E$ as shown on map of VICTORIA GROVES UNIT NO. 8, Map Book 35-4, Rec. Riverside Co., California.

- ↳ Indicates 2" x 2" Redwood Stake tagged R. E. 862 set.
- ↳ Indicates 2" x 2" Redwood Stake tagged R. E. 862 found unless noted otherwise.

COUNTY SURVEYOR'S CERTIFICATE

This map has been examined for conformance with the requirements of Chapter 15 of Division 3 of the Business and Professions Code this 13th day of JANUARY, 1958.

A. C. KEITH County Surveyor
By A. T. Worsley Deputy