

29/34

Filed for Record at request of County Surveyor this 20th day of JANUARY 1959 at 11:20 A.M. in Book 29 of Record of Survey of Page 34  
Fee \$5.00 No. 5017  
JACK A. ROSS County Recorder  
By P. A. Wheat Deputy

# RECORD OF SURVEY

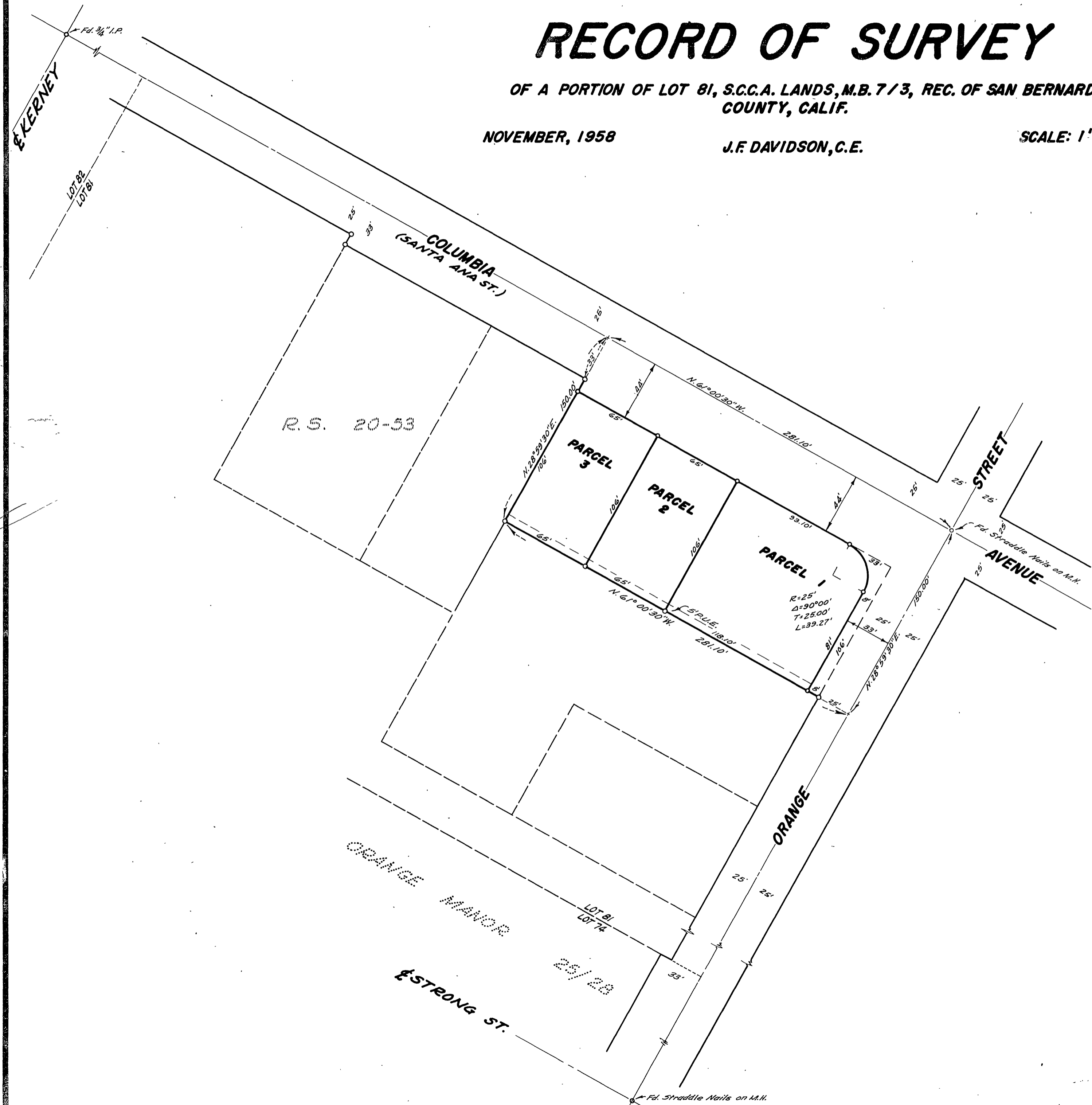
OF A PORTION OF LOT 81, S.C.C.A. LANDS, M.B. 7/3, REC. OF SAN BERNARDINO COUNTY, CALIF.

NOVEMBER, 1958

J.F. DAVIDSON, C.E.

SCALE: 1" = 50'

SURVEY MADE AT THE REQUEST OF JOHN B. GEESING



This Record of Survey map was approved by the City Council of the City of Riverside, California, on the 23<sup>rd</sup> day of December, 1958.

Virginia J. Strobel  
City Clerk of the City of Riverside, California

### ENGINEER'S CERTIFICATE

This map correctly represents a survey made by me or under my direction in conformance with the requirements of Chapter 15 of Division 3 of the Business and Professions Code at the request of JOHN B. GEESING in December, 1958.

J. F. Davidson  
Registered Civil Engineer No. 862

### ENGINEER'S NOTE

Bearings are based on the Center-Line of Santa Ana Street (Now Columbia Avenue) which bears N. 61° 00' 30" W. as shown on Record of Survey 20/53, Records of Riverside County, California.

Set 2"x2" Redwood Stakes, painted white and tagged R.E. 862, at all points shown thus — unless otherwise noted.

### COUNTY SURVEYOR'S CERTIFICATE

This map has been examined for conformance with the requirements of Chapter 15 of Division 3 of the Business and Professions Code this 12<sup>th</sup> day of JANUARY, 1959.

A. C. KEITH County Surveyor  
By C. T. Worley Deputy