

# IN THE COUNTY OF RIVERSIDE RECORD OF SURVEY

Being a Survey of a Portion of the S.E. 1/4 of Section 4 T. 2 S. R. 6 W.  
and a Portion of the N.E. 1/4 of Section 3 T. 3 S. R. 6 W. S.B.B. & M.

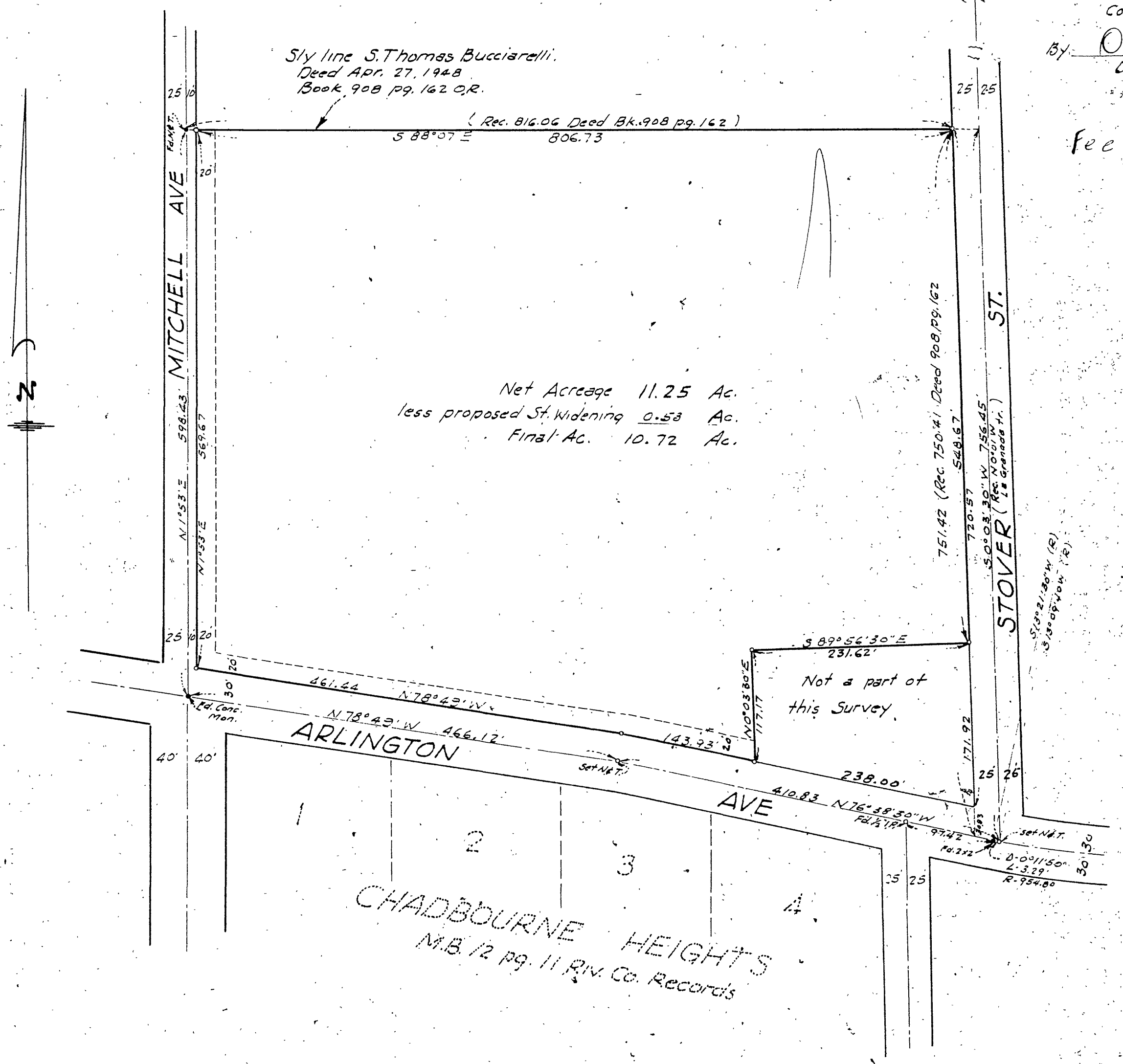
January 1959 Scale 1 in. = 100 ft.  
Donald J. McKee — Licenced Surveyor

Filed for Record this 5th day of  
February 1959 at 11:00 A.M.  
in Book 29 of Page 41 at the  
request of County Surveyor

JACK A. ROSS  
County Recorder

By O. G. Neal  
Deputy

Fee \$5.00



Note: - Bearings are based on the center line of Mitchell Ave shown as N 1° 53' E on Map of Alhambra Addition M.B. 11 pg. 78 & 79 Riv. Co.

- Indicates 1/4" Iron Pipe set and tagged L.S. 1825
- indicates Monuments found as shown.

### SURVEYOR'S CERTIFICATE

This map correctly represents a survey made under my direction in conformance with the requirements of Chapter 15 of Division 3 of the Business and Professions Code at the request of the Alvard School District in Jan 1959.

Donald J. McKee  
Licenced Land Surveyor N<sup>o</sup>. 1825

### COUNTY SURVEYOR'S CERTIFICATE

This map has been examined for conformance with the requirements of Chapter 15 of Division 3 of the Business and Professions Code this 4th day of February 1959

A. C. KEITH, COUNTY SURVEYOR

By G. T. Worsley  
Assistant.

29/41  
RS 29/41