

IN THE CITY OF RIVERSIDE

RECORD OF SURVEY

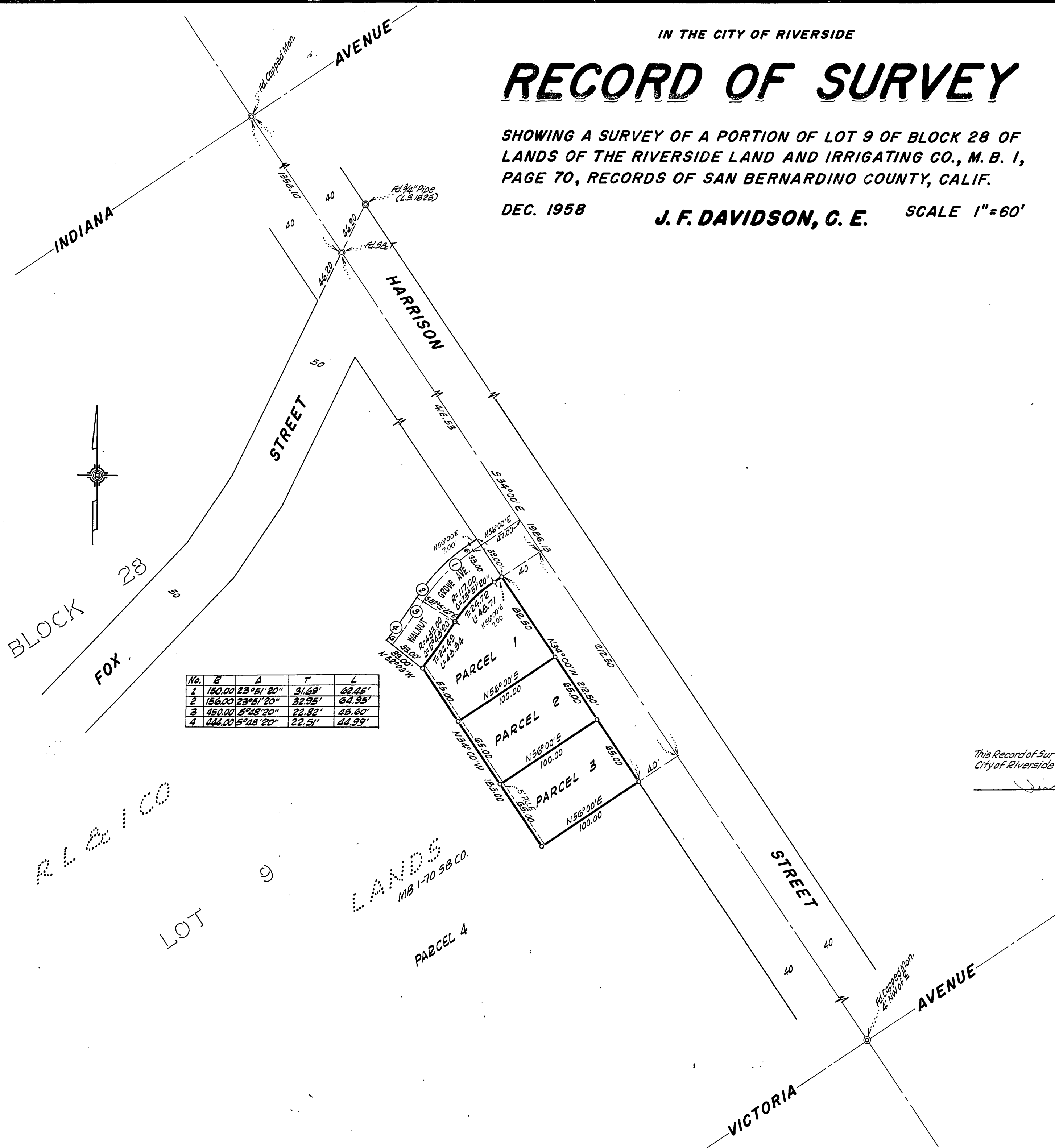
SHOWING A SURVEY OF A PORTION OF LOT 9 OF BLOCK 28 OF LANDS OF THE RIVERSIDE LAND AND IRRIGATING CO., M. B. 1, PAGE 70, RECORDS OF SAN BERNARDINO COUNTY, CALIF.

DEC. 1958

J. F. DAVIDSON, C. E.

SCALE 1"=60'

Filed for Record at request of County Surveyor this 5th day of March, 1959 at 3:15 P.M. in Book 79 of Record of Survey of Page 48.
Fee \$5.00 No. 100-211
JACK A. ROSS County Recorder
By O. A. Wheat Deputy



No.	E	A	T	L
1	180.00	23°51'20"	31.68'	62.25'
2	156.00	23°51'20"	32.35'	63.95'
3	450.00	5°45'20"	22.82'	45.60'
4	446.00	5°45'20"	22.51'	44.99'

SURVEY MADE AT REQUEST OF HAROLD HEERS

This Record of Survey map was approved by the City Council of the City of Riverside on the 3rd day of March, 1959.

Virginia J. Shroeder
City Clerk of the City of Riverside

ENGINEER'S CERTIFICATE

This map correctly represents a survey made by me or under my direction in conformance with the requirements of Chapter 15 of Division 3 of the Business and Professions Code at the request of HAROLD HEERS in DEC., 1958.

J. F. Davidson
Registered Civil Engineer No. 862

ENGINEER'S NOTE

Bearings are based on the center line of HARRISON STREET being S34°00'E as shown on R.S. 24-73, Rec. Riv. Co., Calif.

⌒ Indicates 2"x2" Redwood Stake tagged R.E. 862 set.

COUNTY SURVEYOR'S CERTIFICATE

This map has been examined for conformance with the requirements of Chapter 15 of Division 3 of the Business and Professions Code this 5th day of March, 1959.

A. C. KEITH County Surveyor

By G. T. Worsley Deputy