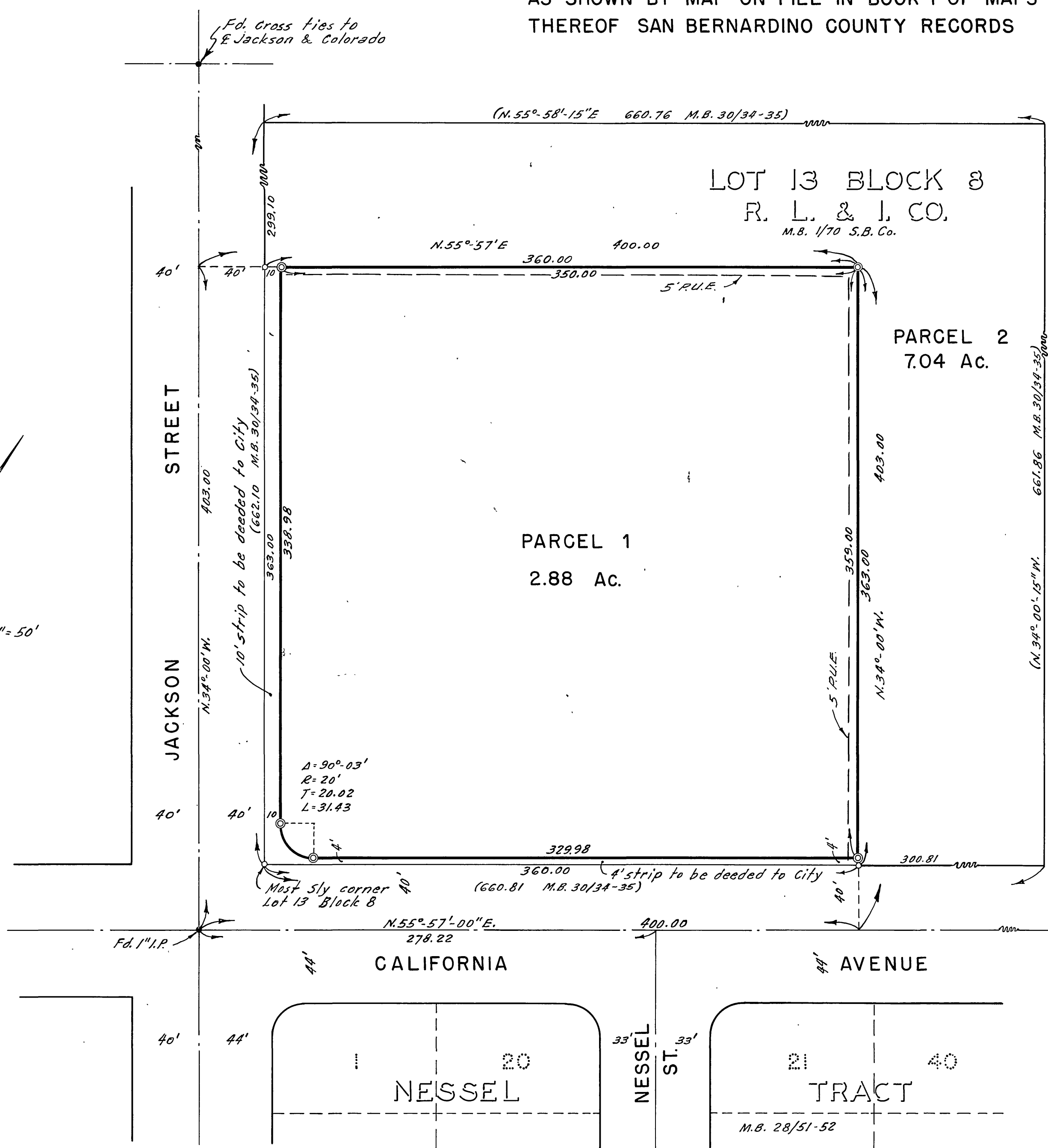
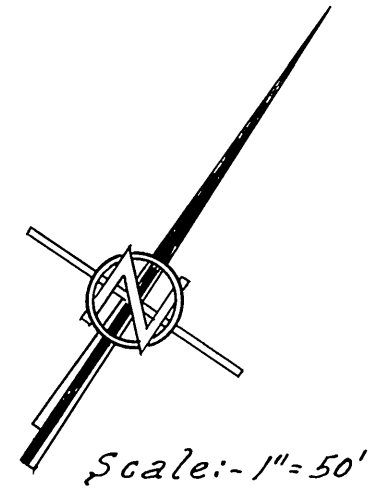


IN THE CITY OF RIVERSIDE

RECORD OF SURVEY

OF A PORTION OF LOT 13 IN BLOCK 8 OF R. L. & I. CO. LANDS AS SHOWN BY MAP ON FILE IN BOOK 1 OF MAPS AT PAGE 70 THEREOF SAN BERNARDINO COUNTY RECORDS

Filed for record at request of County Surveyor this 6th day of March 1959 at 4:40 P.M. in Book 29 of Record of Survey at page 49
Fee \$ 5.00 Jack A. Ross County Recorder
No. 15117
By O. A. Great Deputy



This map correctly represents a survey made by me or under my direction in conformance with the requirements of Chapter 15 of Division 3 of the Business and Professions Code at the request of Arlington Foursquare Church in December 1958.

Ernest N. Webb
R. E. 9876

ENGINEER'S NOTES:-
Basis of Bearings is the centerline of California Avenue taken as N.55°-57'E. as same is shown by map of Nessel Tract on file in Book 28 of Maps at Pages 51 & 52 thereof, Records of Riverside County, California.

Found monuments as noted at all points shown thus ●
Set 3/4" Iron pipe tagged R.E. 9876 at all points shown thus ©
Set 2"x2" redwood stakes tagged R.E. 9876 at all points shown thus ○

Bearings and distances shown (N.55°-58'-15"E. 660.76 M.B. 30/34-35) refer to those taken or computed from Villa d'Este on file in Book 30 of Maps at Pages 34 & 35 thereof, Riv. Co. Records.

This map has been examined for conformance with the requirements of Chapter 15, of Division 3 of the Business and Profession Code this 6th day of March 1959.

A.C. Keith
County Surveyor
By G. T. Worsley Deputy

This Record of Survey was approved by the City Council of the City of Riverside, California on the 23rd day of March 1959

Virginia J. Strobeska
City Clerk of the City of Riverside, California

BY
ALBERT A. WEBB ASSOCIATES
CIVIL ENGINEERS
DECEMBER 1958