

29/53

IN THE CITY OF RIVERSIDE

RECORD OF SURVEY

OF A PORTION OF THE NORTHWEST ONE-QUARTER OF THE NORTHWEST ONE-QUARTER OF SECTION 33, T. 2 S., R. 5 W., S. B. B. & M.

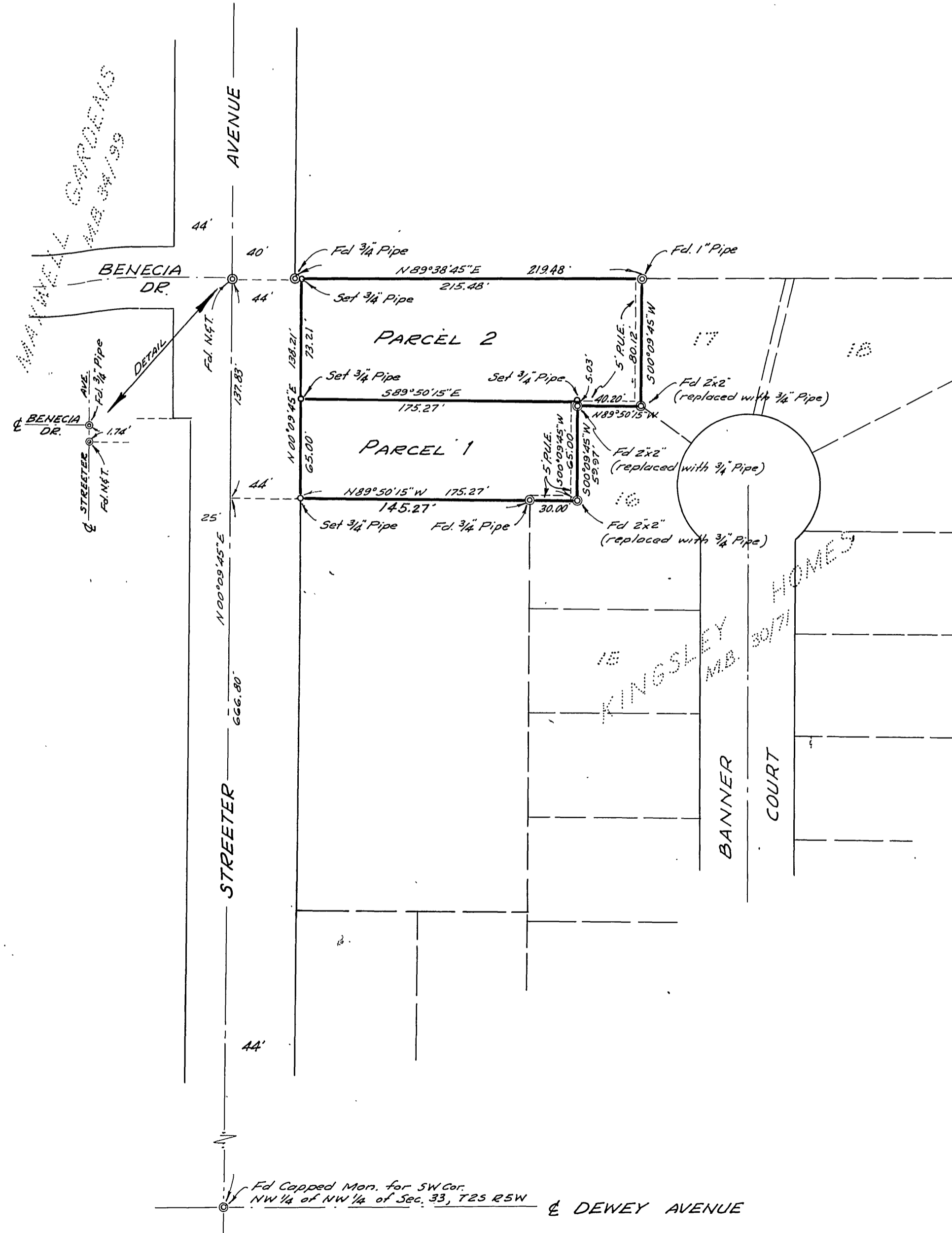
JAN. 1959

J. F. DAVIDSON, C. E.

SCALE 1"=60'

Filed for Record at request of County Surveyor this 13th day of March, 1959 at 4:00 P. M. in Book 79 of Record of Survey of Page 53.
Fee \$5.00 No. 0111
JACK A. ROSS County Recorder
By Carheat Deputy

SURVEYED AT REQUEST OF CARL OAKDEN



This Record of Survey map was approved by the City Council of the City of Riverside, California on the 9th day of January, 1959.
Virginia S. Strickland
City Clerk of the City of Riverside, Calif.

ENGINEER'S CERTIFICATE

This map correctly represents a survey made by me or under my direction in conformance with the requirements of Chapter 15 of Division 3 of the Business and Professions Code at the request of CARL OAKDEN in January, 1959.

George E. McCarty
Registered Civil Engineer No. 10688

ENGINEER'S NOTE

Bearings are based on the center line of STREETER AVENUE being N00°00'45"E as shown on map of "KINGSLEY HOMES" map book 30, page 71, Rec. Riv. Co., Calif.

COUNTY SURVEYOR'S CERTIFICATE

This map has been examined for conformance with the requirements of Chapter 15 of Division 3 of the Business and Professions Code this 13th day of March, 1959.

A. C. KEITH County Surveyor
By G. T. Worsley Deputy