

79/57

RECORD OF SURVEY

OF LOTS 1 AND 6 OF MOUNTAIN VIEW FARMS AS SHOWN IN MAP BOOK 14, PAGE 24, RECORDS OF RIVERSIDE COUNTY, CALIFORNIA.

DECEMBER, 1958

J.F. DAVIDSON C.E.

SCALE 1" = 50'

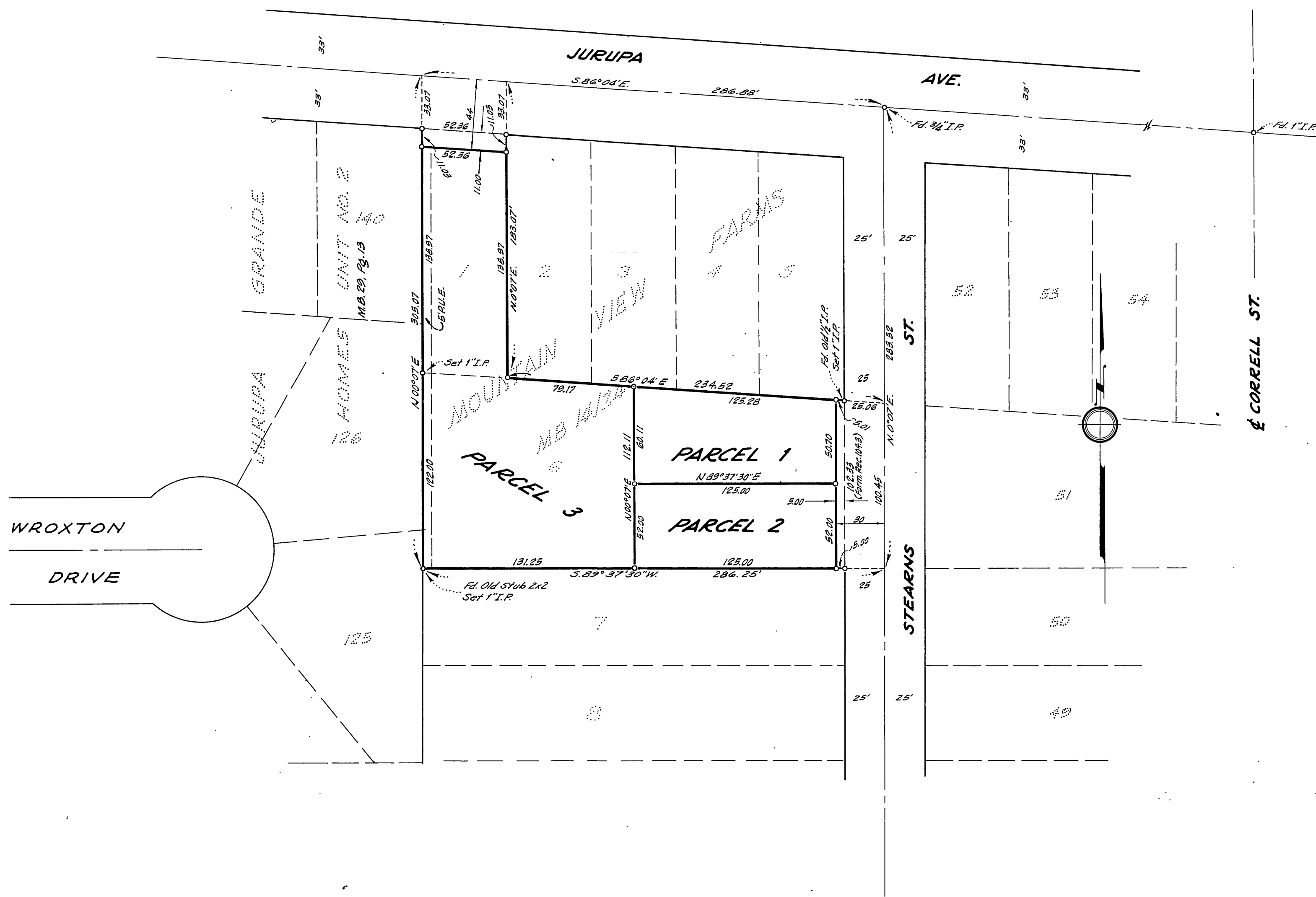
Filed for Record at request of County Surveyor, this 16th day of March, 1959, at 11:58 P.M. in Book 79 of Record of Survey of Page 57.

Fee \$5.00 No. 21895

JACK A. ROSS County Recorder

By O.A. West Deputy

MADE AT THE REQUEST OF MR. H. FLANNERY



ENGINEER'S CERTIFICATE

This map correctly represents a survey made by me or under my direction in conformance with the requirements of Chapter 15 of Division 3 of the Business and Professions Code at the request of Mr. H. FLANNERY in December, 1958.

J.F. Davidson
Registered Civil Engineer No.

ENGINEER'S NOTE

Bearings are based on the Centerline of Jurupa Ave. which bears S. 86° 04' E. as shown on a map of Mountain View Farms, Map Book 14, Page 24, Records of Riverside County, Calif. in 1958.
o = 3/4" Pipe tagged R.E. 862 set unless noted otherwise.

This Record of Survey map was approved by the City Council of the City of Riverside, California on the 3rd day of March, 1959.

Virginia Strober
City Clerk of the City of Riverside, California.

COUNTY SURVEYOR'S CERTIFICATE

This map has been examined for conformance with the requirements of Chapter 15 of Division 3 of the Business and Professions Code this 16th day of March, 1959.

A.C. KEITH County Surveyor
By C.T. Worsley Deputy

1795

FB 636-29