

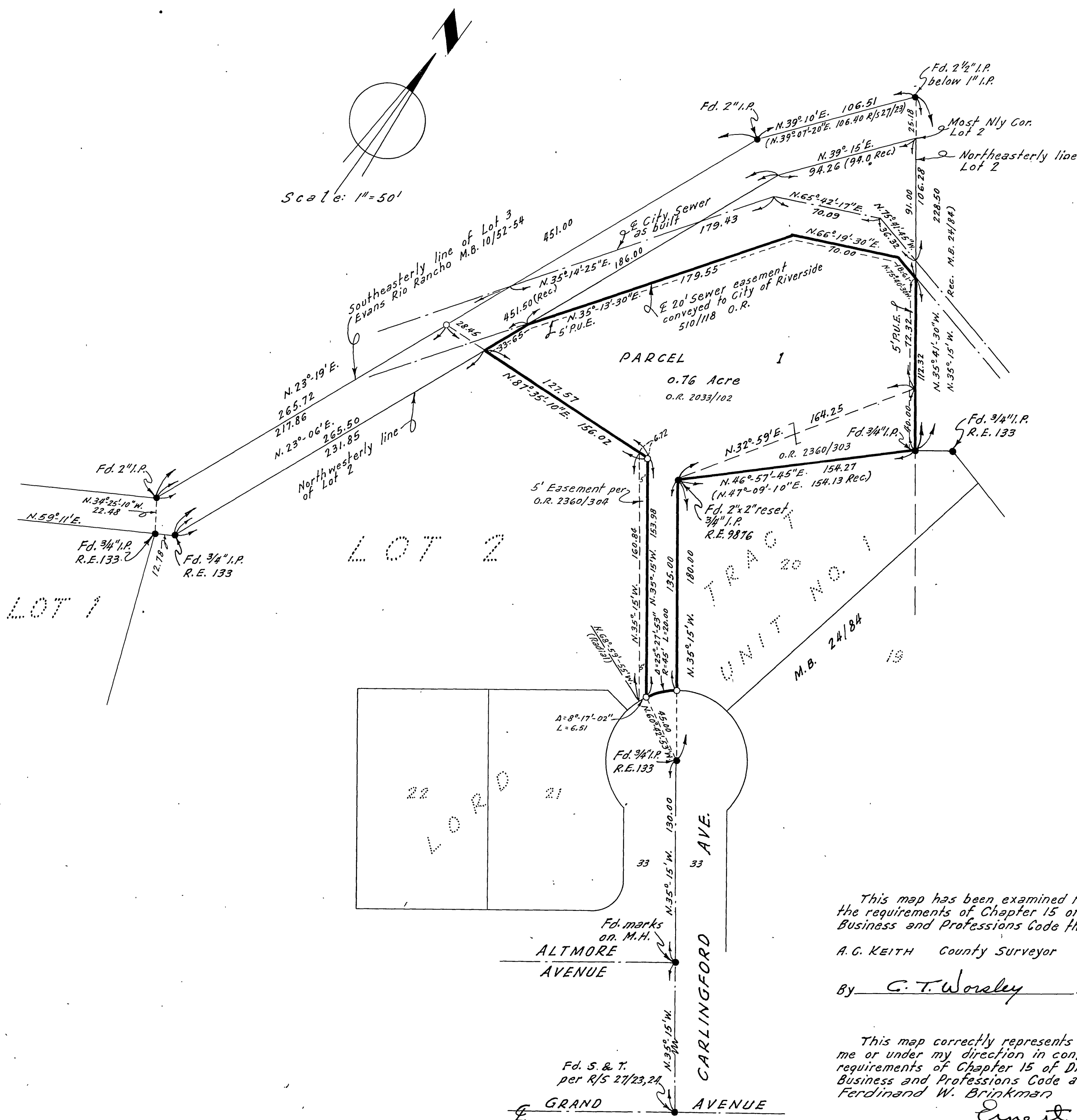
# IN THE CITY OF RIVERSIDE RECORD OF SURVEY

OF A PORTION OF LOT 2 OF MAP OF ADDITION NO. 1  
TO GRAND AVENUE TRACT AS SHOWN BY MAP ON FILE  
IN BOOK 6 OF MAPS AT PAGE 90 THEREOF, RECORDS  
OF RIVERSIDE COUNTY, CALIFORNIA.

ALBERT A. WEBB ASSOCIATES  
CIVIL ENGINEERS  
RIVERSIDE CALIFORNIA  
JULY 1958

Filed for Record at request of County Surveyor this  
19th day of March, 1958 at 9:00 A.M. in  
Book 29 of Record of Survey at Page 59.  
Fee \$5.00 No. 59  
JACK A. ROSS County Recorder

By O. A. Great Deputy



This map has been examined for conformance with  
the requirements of Chapter 15 of Division 3 of the  
Business and Professions Code this 17th day of March 1959

A. G. KEITH County Surveyor

By G. T. Worley Deputy

This map correctly represents a survey made by  
me or under my direction in conformance with the  
requirements of Chapter 15 of Division 3 of the  
Business and Professions Code at the request of  
Ferdinand W. Brinkman in June of 1958.

Ernest N. Webb  
R. C. E. No. 9876

ENGINEER'S NOTES:-

Basis of Bearings is the centerline of CARLINGFORD  
AVENUE taken as N. 35° 15' W. as same is shown by Map  
of Lord Tract Unit No. 1 on file in Book 24 of Maps  
at Page 84 thereof, Records of Riv. Co. Calif.

Found monuments as noted at all points  
shown thus •

Set 3/4" I.P. tagged R.E. 9876 at all points shown  
thus o

This Record of Survey map was approved by  
the City Council of the City of Riverside,  
California on the 17th day of March, 1958.

Virginia J. Strickland  
City Clerk of the City of Riverside,  
California