

IN THE CITY OF RIVERSIDE

RECORD OF SURVEY

SHOWING A SURVEY OF LOT 2 OF BLOCK 79 OF ARLINGTON HEIGHTS, MAP BOOK 11, PAGES 20 AND 21, REC. S. B. CO., CALIF.

NOV. 1958

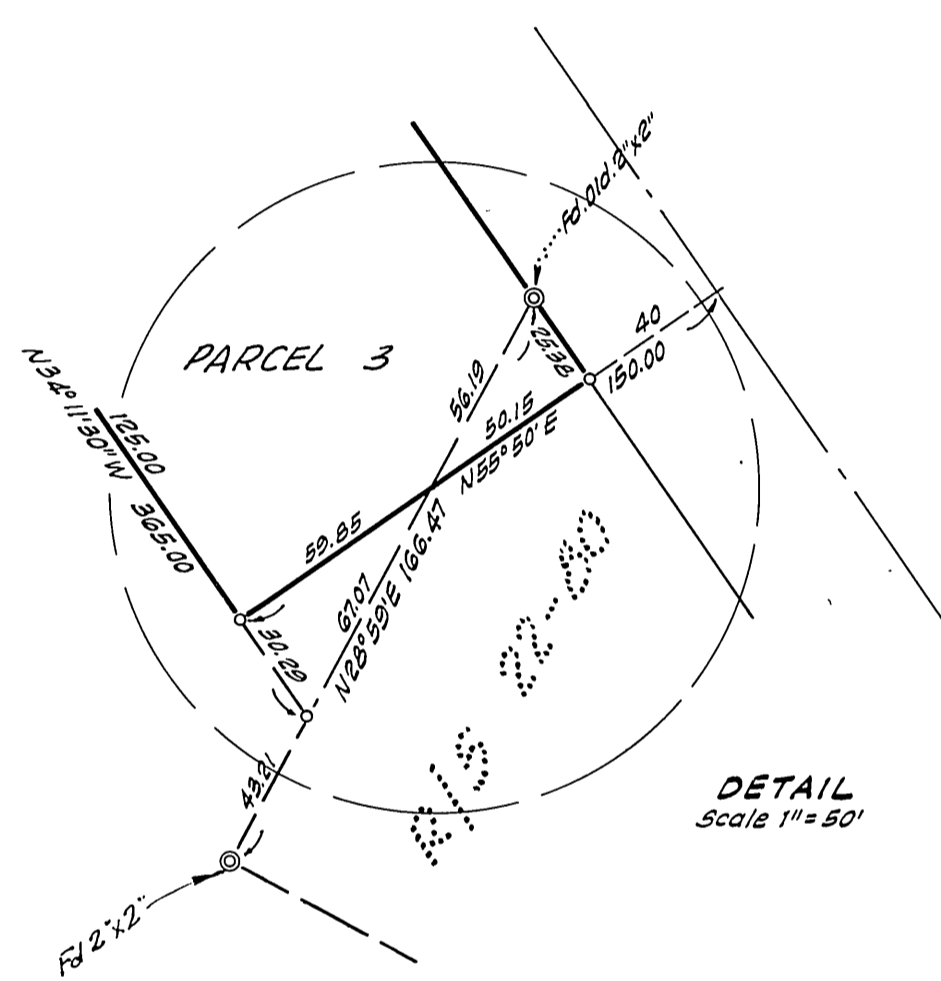
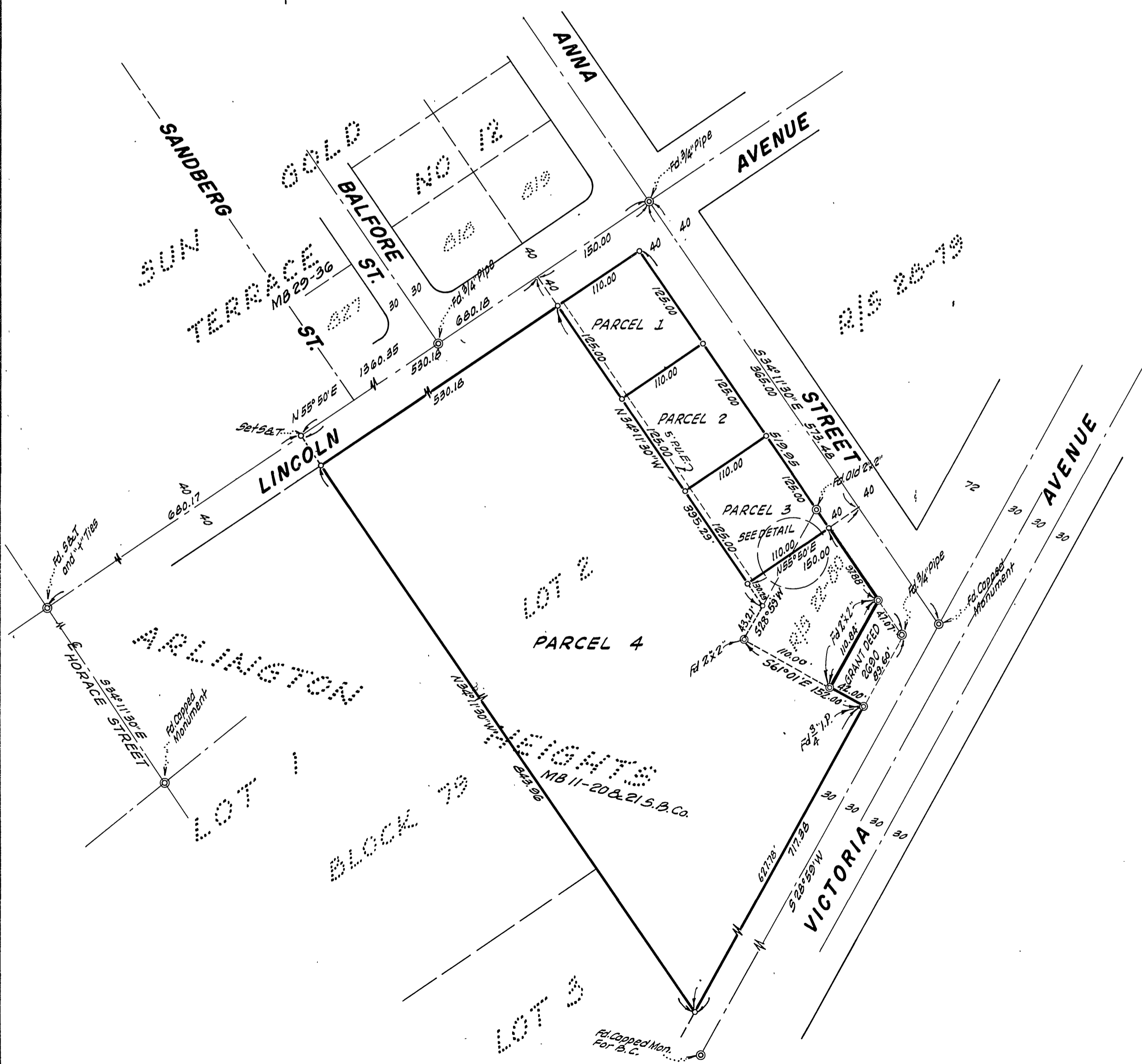
J. F. DAVIDSON, C. E.

SCALE 1"=100'

Filed for Record at request of County Surveyor this 24th day of March, 1959 at 4:31 P.M. in Book 79 of Record of Survey of Page 1e1
Fee \$5.00 No. 79/61
JACK A. ROSS County Recorder
By O. A. Ornat Deputy



SURVEY MADE AT REQUEST OF CLINTON M. THORSON



This Record of Survey map was approved by the City Council of the City of Riverside, California on the 3rd day of March, 1959
Virginia Strohecker
City Clerk of the City of Riverside, Calif.

ENGINEER'S CERTIFICATE
This map correctly represents a survey made by me or under my direction in conformance with the requirements of Chapter 15 of Division 3 of the Business and Professions Code at the request of CLINTON M. THORSON on December, 1958.
J. F. Davidson
Registered Civil Engineer No. 862

ENGINEER'S NOTE
Bearings are based on the center line of ANNA STREET being S 34° 11' 30" E as shown on R.S. 22-30 Rec. Riv. Co. California.
o = 3/4" Pipe tagged R.E. 862 set unless otherwise noted.

COUNTY SURVEYOR'S CERTIFICATE
This map has been examined for conformance with the requirements of Chapter 15 of Division 3 of the Business and Professions Code this 23rd day of March, 1959.
A. C. KEITH County Surveyor
By A. T. Worsley Deputy