

IN THE CITY OF RIVERSIDE

# RECORD OF SURVEY

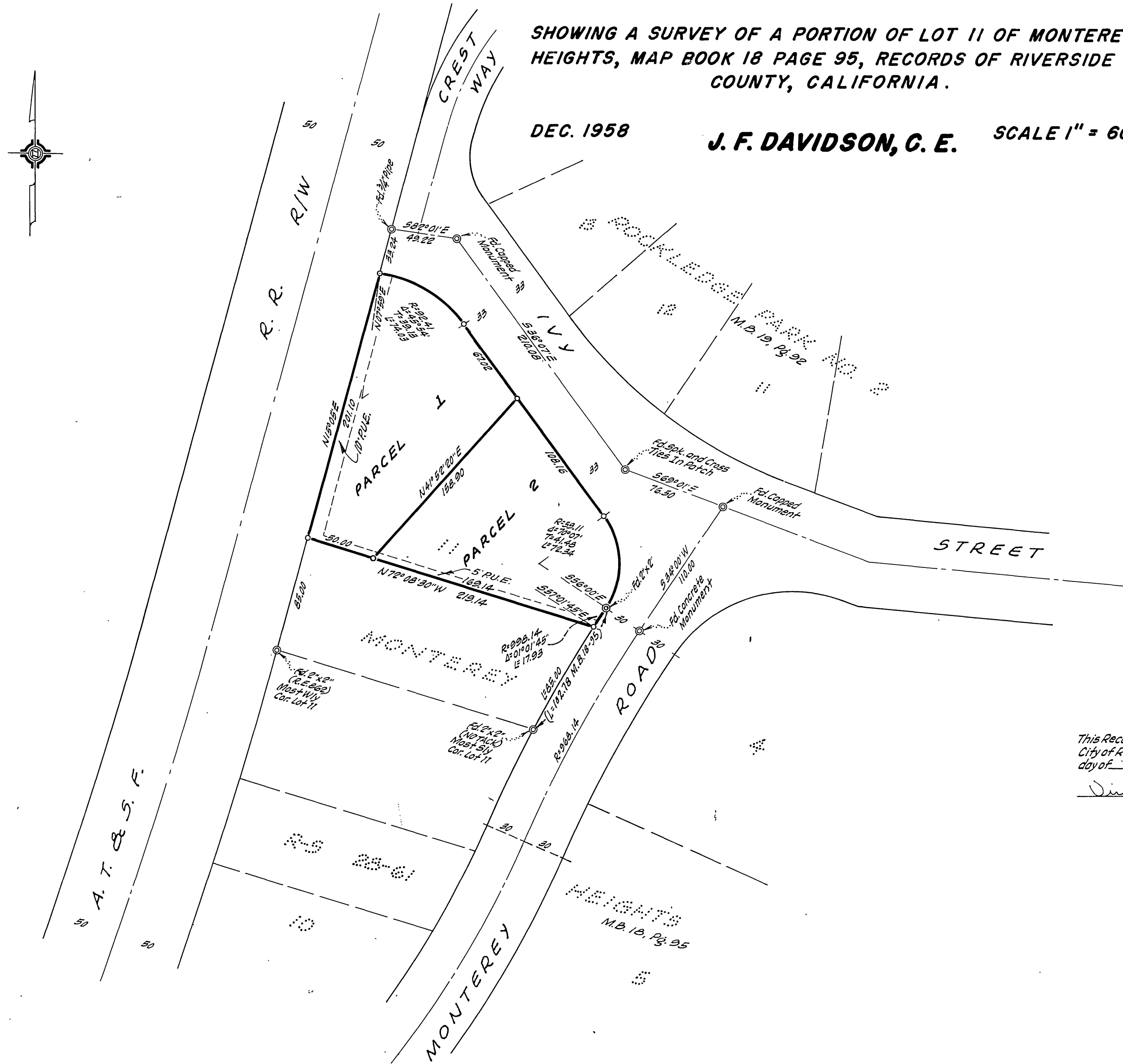
SHOWING A SURVEY OF A PORTION OF LOT 11 OF MONTEREY HEIGHTS, MAP BOOK 18 PAGE 95, RECORDS OF RIVERSIDE COUNTY, CALIFORNIA.

DEC. 1958

J. F. DAVIDSON, C. E. SCALE 1" = 60'

Filed for Record at request of County Surveyor this 25th day of MARCH, 1959, at 4:10 P. M. in Book 29 of Record of Survey of Page 63.  
Fee \$ 5.00 No. \_\_\_\_\_  
JACK A. ROSS County Recorder  
By O. A. Mead Deputy

SURVEYED AT REQUEST OF MRS. W. A. CADD



This Record of Survey map was approved by the City Council of the City of Riverside, California, on this 5th day of March, 1959

Virginia D. Stralcher  
City Clerk of the City of Riverside

### ENGINEER'S CERTIFICATE

This map correctly represents a survey made by me or under my direction in conformance with the requirements of Chapter 15 of Division 3 of the Business and Professions Code at the request of MRS. W. A. CADD in February, 1959.

J. F. Davidson  
Registered Civil Engineer No. 862

### ENGINEER'S NOTE

Bearings are based on the center line of IVY STREET being 536°07'E as shown on map of "MONTEREY HEIGHTS" map book 18 page 95 Records of Riverside County, California.

o = 3/4" Pipe tagged R.E. 862 set.

### COUNTY SURVEYOR'S CERTIFICATE

This map has been examined for conformance with the requirements of Chapter 15 of Division 3 of the Business and Professions Code this 25th day of MARCH, 1959

A. C. KEITH County Surveyor  
By C. T. Worsley Deputy