

29/64
R5A-38

IN THE CITY OF RIVERSIDE RECORD OF SURVEY

Filed for Record at request of County Surveyor this 1st day of April, 1959, at 9:00 A.M. in Book 27 of Record of Survey of Page 64.
Fee \$ 5.00 No. 28259
JACK A. ROSS County Recorder
By O.A. West Deputy

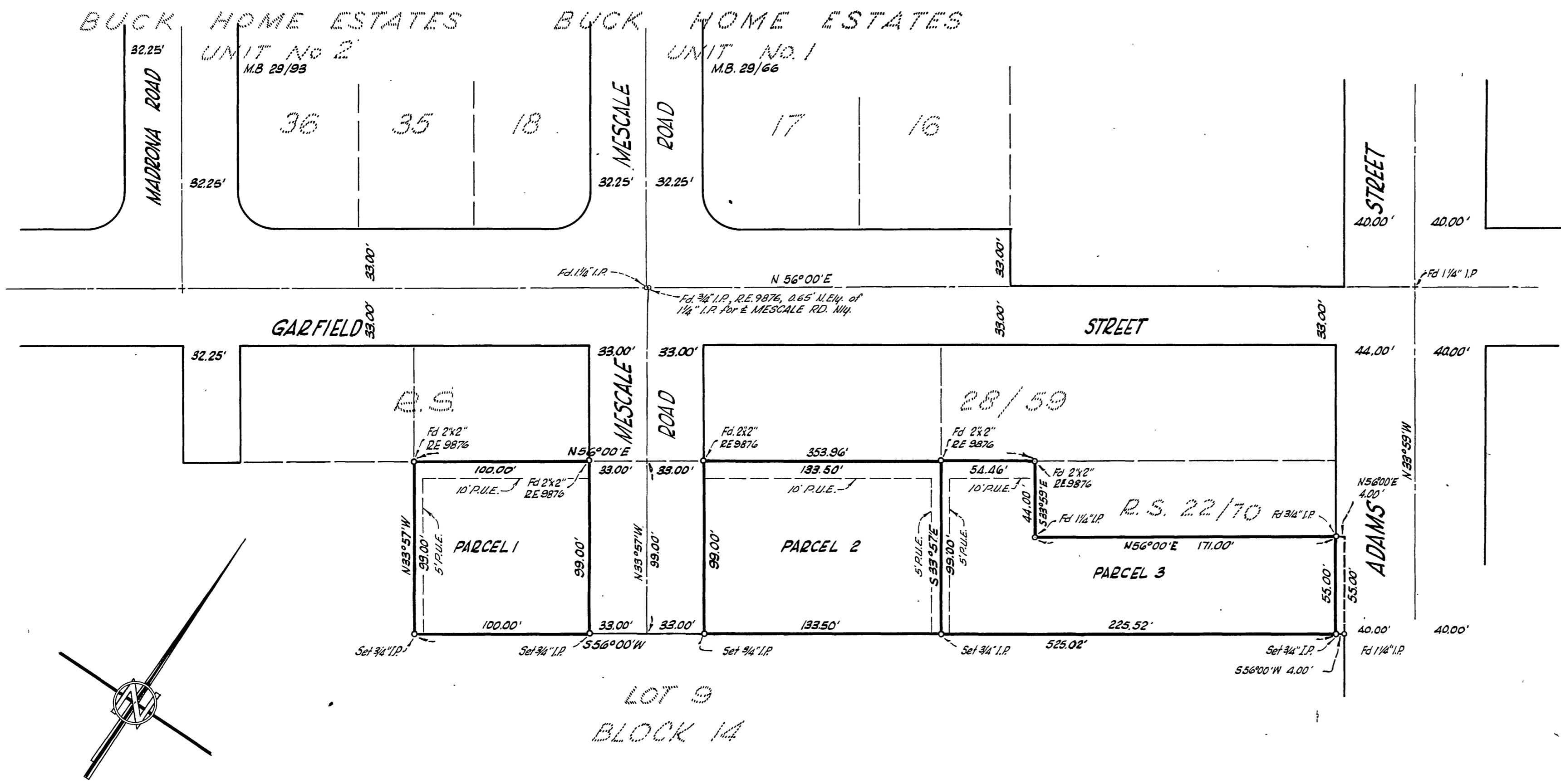
OF A PORTION OF LOT 9 IN BLOCK 14 OF THE LANDS OF THE RIVERSIDE LAND AND IRRIGATING COMPANY AS SHOWN IN MAP BOOK 1, PAGE 70, RECORDS OF SAN BERNARDINO COUNTY, CALIFORNIA.

SEPTEMBER, 1958

J.F. DAVIDSON, CIVIL ENGINEER

SCALE: 1" = 50'

Made at the request of FRANK STENZEL



This Record of Survey map was approved by the City Council of the City of Riverside, California on the 17th day of March, 1959.
Virginia H. Hatcher
City Clerk of the City of Riverside, California

ENGINEER'S CERTIFICATE

This map correctly represents a survey made by me or under my direction in conformance with the requirements of Chapter 15 of Division 3 of the Business and Professions Code at the request of FRANK STENZEL.
in September, 1958
George E. McCarty
Registered Civil Engineer No. 106880

ENGINEER'S NOTE

Bearings are based on the center line of GARFIELD ST. being N56°00'E as shown on Record of Survey 28/59, Records of Riv. Co. Calif.

COUNTY SURVEYOR'S CERTIFICATE

This map has been examined for conformance with the requirements of Chapter 15 of Division 3 of the Business and Professions Code this 31st day of MARCH, 1959.
A.C. KEITH County Surveyor
By G.T. Worsley Deputy