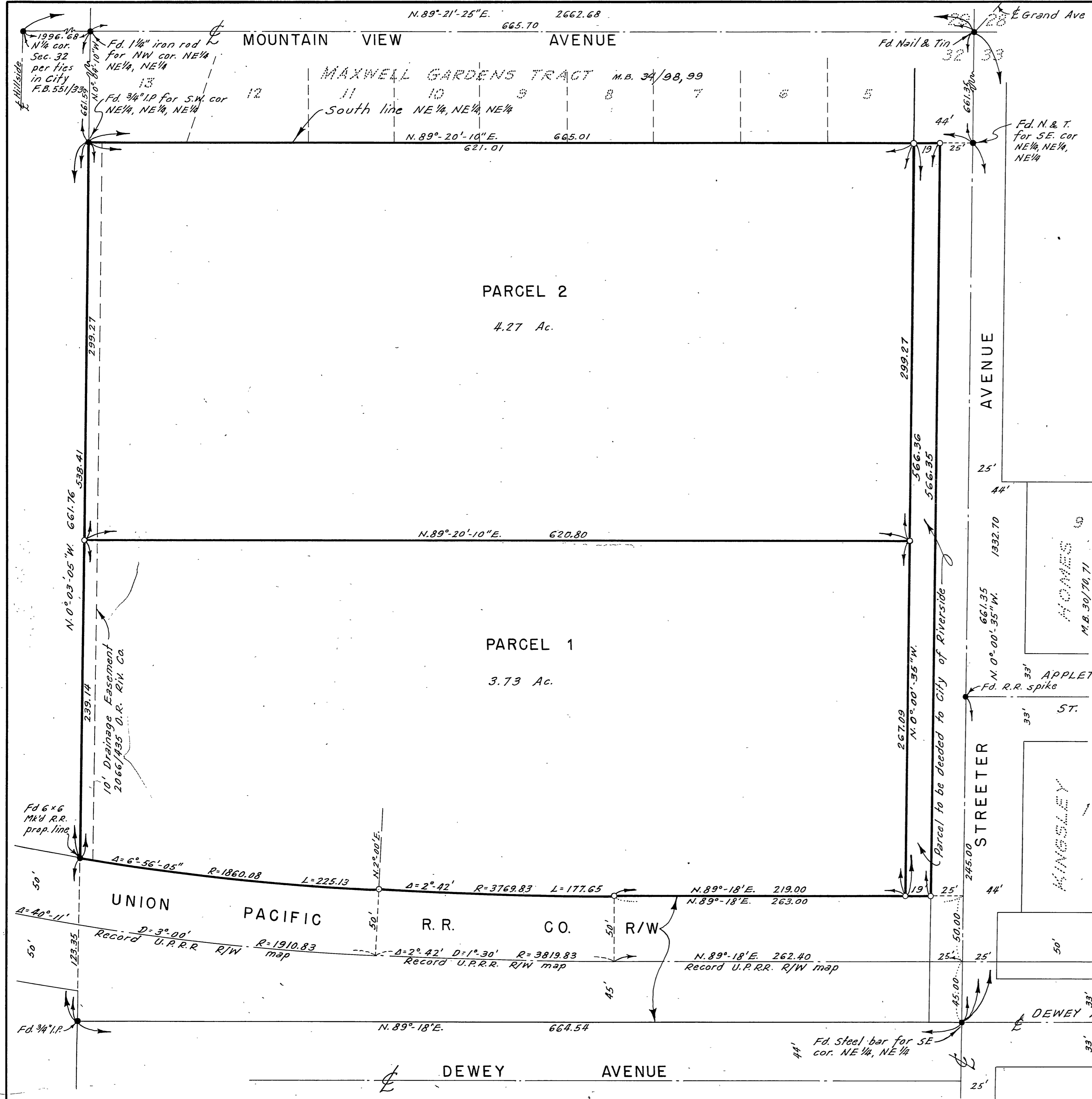


29/69



IN THE CITY OF RIVERSIDE
RECORD OF SURVEY

OF A PORTION OF THE E 1/2 OF THE NE 1/4 OF THE
 NE 1/4 OF SECTION 32, T.2S., R.5W., S.B.B.8M.

— BY —
 ALBERT A. WEBB ASSOCIATES
 CIVIL ENGINEERS
 FEBRUARY 1958

This map correctly represents a survey made by me or under my direction in conformance with the requirements of Chapter 15 of Division 3 of the Business and Professions Code at the request of Mrs. Cora E. Call in February 1958

Ernest N. Webb
 R.C.E. 9876

ENGINEER'S NOTES:

Basis of Bearings is the centerline of Streeter Avenue taken as N. 0° 00' - 35" W. as same is shown on map of MAXWELL GARDENS TRACT recorded in Book 34 of Maps at pages 98 and 99 thereof, Record of Riverside County, California.

Found monuments as noted at all points shown thus ●

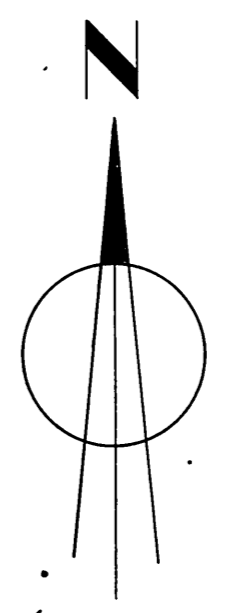
Set 3/4" Iron Pipe tagged R.E. 9876 at all points shown thus ○ unless otherwise noted.

This map has been examined for conformance with the requirements of Chapter 15 of Division 3 of the Business and Profession Code this 13th day of April 1959.

A.C. Keith
 County Surveyor
C. T. Woreley
 by Deputy

This Record of Survey was approved by the City Council of the City of Riverside, California on the 7th day of April 1959.

Virginia J. Straker
 City Clerk of the City of Riverside, California



Scale: - 1" = 50'

31045

Filed for record this 13th day of April 1959 at 4:50 P.M. in Book 29 at page 69, at the request of County Surveyor

Fee \$5.00 Jack A. Ross County Recorder Deputy