

IN THE CITY OF RIVERSIDE

# RECORD OF SURVEY

OF A PORTION OF LOT 2 IN BLOCK 28 OF THE LANDS OF RIVERSIDE LAND AND IRRIGATING COMPANY, AS SHOWN BY MAP ON FILE IN BOOK 1 PAGE 70 OF MAPS, SAN BERNARDINO COUNTY RECORDS

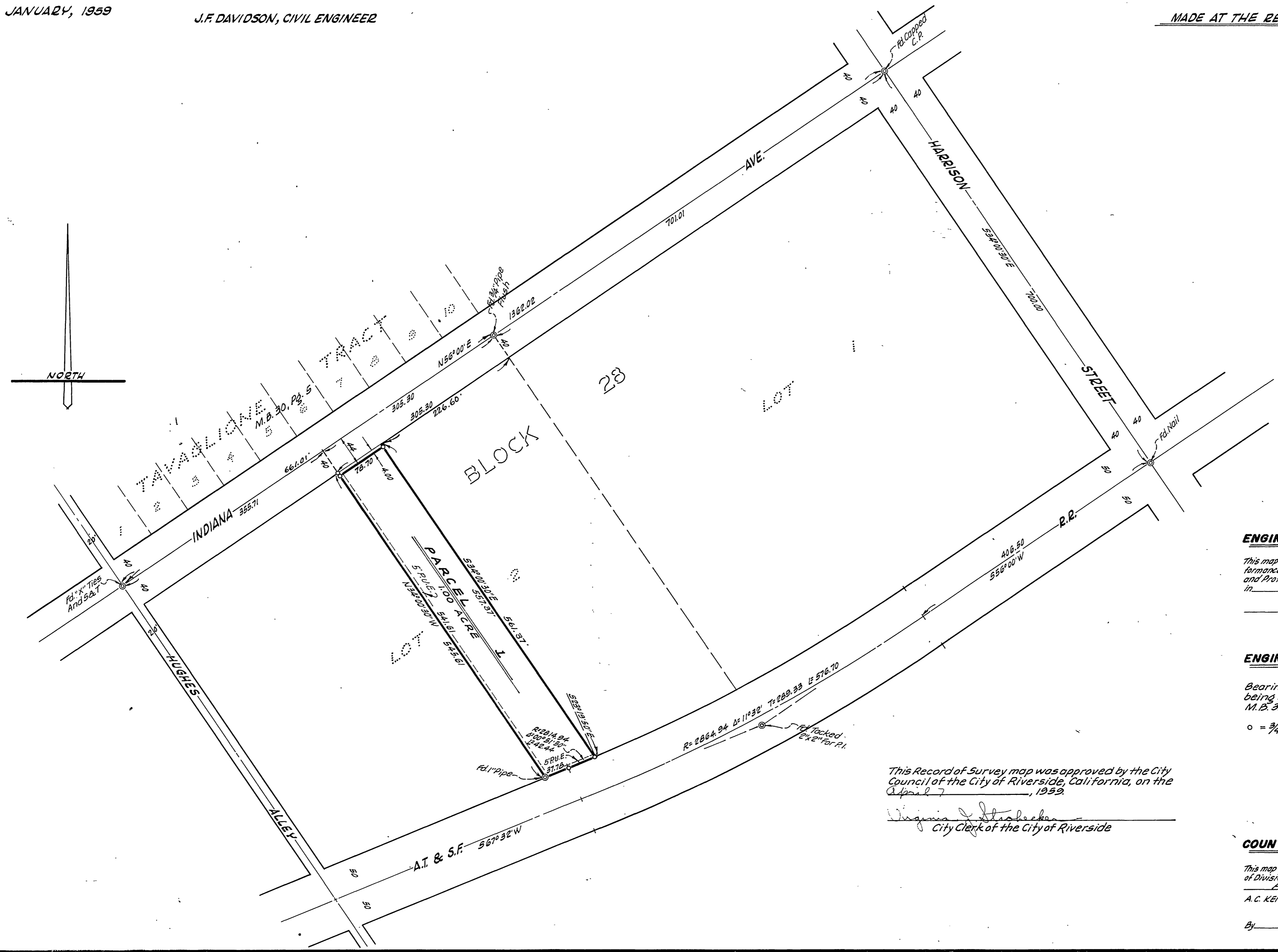
JANUARY, 1959

J.F. DAVIDSON, CIVIL ENGINEER

SCALE 1"=100'

Filed for Record at request of County Surveyor this 13th day of April, 1959, at 4:05 P.M. in Book 79 of Record of Survey of Page 70.  
Fee \$ 5.00 No. 31010  
JACK A. ROSS County Recorder  
By O.A. Wheat Deputy

MADE AT THE REQUEST OF D.A. YBARRA



### ENGINEER'S CERTIFICATE

This map correctly represents a survey made by me or under my direction in conformance with the requirements of Chapter 15 of Division 3 of the Business and Professions Code at the request of D.A. YBARRA in February, 1959.

J.F. Davidson  
Registered Civil Engineer No. 862

### ENGINEER'S NOTE

Bearings are based on the center line of INDIANA AVENUE being N56°00'E as shown on map of "TAVAGLIONE TRACT" M.B. 30, Pg. 5, Rec. of Riverside County, California.

o = 3/4" Pipe tagged R.E. 862 set.

This Record of Survey map was approved by the City Council of the City of Riverside, California, on the April 7, 1959.

Virginia J. Stebbins  
City Clerk of the City of Riverside

### COUNTY SURVEYOR'S CERTIFICATE

This map has been examined for conformance with the requirements of Chapter 15 of Division 3 of the Business and Professions Code this April 11, 1959.

A.C. KEITH County Surveyor

By G.T. Worsley Deputy