

IN THE CITY OF RIVERSIDE

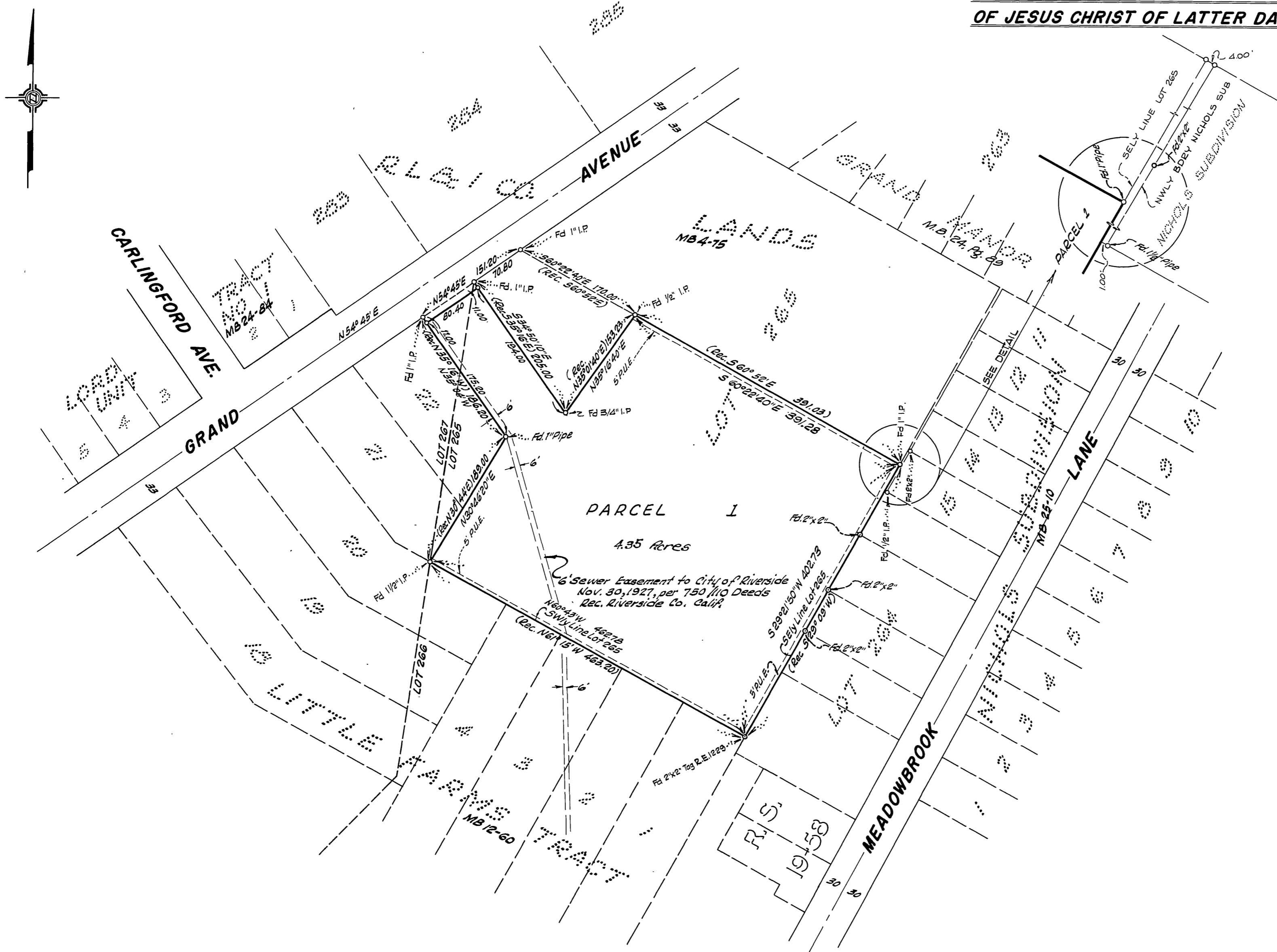
RECORD OF SURVEY

SHOWING A SURVEY OF PORTIONS OF LOTS 265 & 267 OF CORRECTED MAP OF ADDITIONS TO MAPS, RIVERSIDE LAND AND IRRIGATING COMPANY LANDS, MAP BOOK 4, PAGE 75, RECORDS OF RIVERSIDE CO., CALIF.

SEPTEMBER 1958 J. F. DAVIDSON, C. E. SCALE 1" = 100'

Filed for Record at request of County Surveyor this 1st day of May, 1958, at 3:54 P. M. in Book 227 of Record of Survey at Page 741. Fee \$5.00 No. 07676
JACK A. ROSS County Recorder
By O. A. Wheat Deputy

SURVEY MADE AT REQUEST OF THE CHURCH OF JESUS CHRIST OF LATTER DAY SAINTS



This Record of Survey map was approved by the City Council of the City of Riverside California, on the 28th day of April, 1958
Virginia J. Strohecker
City Clerk of the City of Riverside

ENGINEER'S CERTIFICATE

This map correctly represents a survey made by me or under my direction in conformance with the requirements of Chapter 15 of Division 3 of the Business and Professions Code at the request of The Church of Jesus Christ of L.D.S. in No. V. 1958

J. F. Davidson
Registered Civil Engineer No. 862

ENGINEER'S NOTE

Bearings are based on the Center line of GRAND AVENUE, being N54°45'E as shown on map of "JURUPA GRANDE HOMES" MB 26-44, Records of Riverside County, California.

COUNTY SURVEYOR'S CERTIFICATE

This map has been examined for conformance with the requirements of Chapter 15 of Division 3 of the Business and Professions Code this 1st day of May, 1958

A. C. KEITH County Surveyor

By E. T. Worsley Deputy