

IN THE CITY OF RIVERSIDE

RECORD OF SURVEY

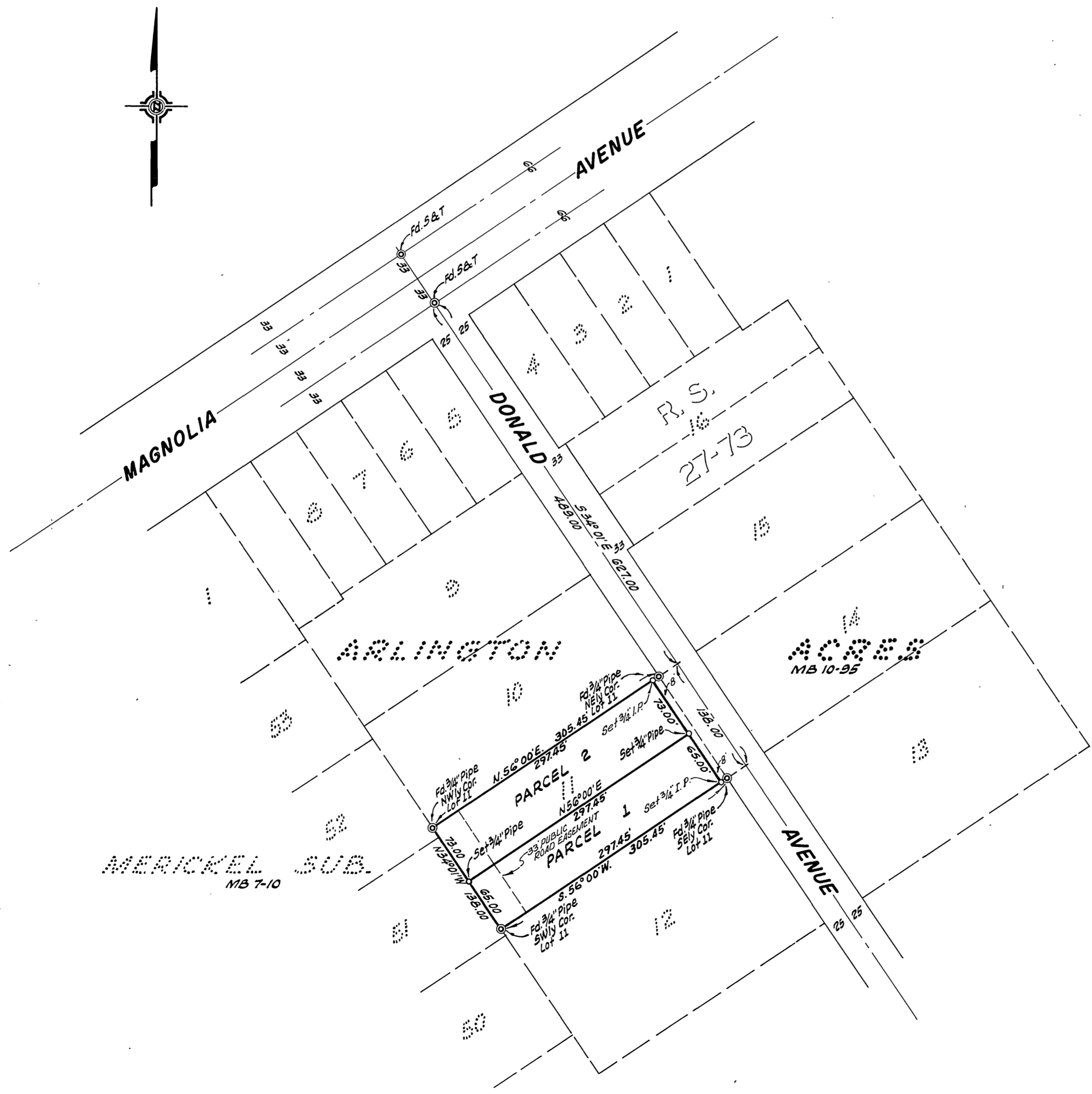
SHOWING A SURVEY OF LOT 11 OF THE ARLINGTON ACRES
AS SHOWN IN MAP BOOK 10, PAGE 95, REC. RIVERSIDE CO., CALIF.

SEPT. 1958

J. F. DAVIDSON, C. E.

SCALE 1"=100'

Filed for Record at request of County Surveyor this 7th day of May, 1958 at 10:00 A.M. in Book 77 of Record of Survey of Page 77
Fee \$ 1.00 No. 10668
JACK A. ROSS County Recorder
By O. A. Wheat Deputy



SURVEY MADE AT REQUEST OF CARL O. HANSON

This Record of Survey map was approved by the City Council of the City of Riverside, California on the 5th day of May, 1958.
Virginia J. Strobocher
City Clerk of the City of Riverside, California.

ENGINEER'S CERTIFICATE

This map correctly represents a survey made by me or under my direction in conformance with the requirements of Chapter 15 of Division 3 of the Business and Professions Code at the request of _____ in _____ September, 1958.

J. F. Davidson
Registered Civil Engineer No. 10668

ENGINEER'S NOTE

Bearings are based on the Center-Line of Donald Avenue, being S34°01'E as shown on map of "ARLINGTON ACRES", MB 10-95, Rec. Riv. Co., Calif.

COUNTY SURVEYOR'S CERTIFICATE

This map has been examined for conformance with the requirements of Chapter 15 of Division 3 of the Business and Professions Code this 6th day of May, 1958.

A. C. KEITH County Surveyor

By C. T. Woolley Deputy
FB 625-42 (REV. 5-55-70)