

29/79

IN THE CITY OF RIVERSIDE

RECORD OF SURVEY

OF A PORTION OF BLOCK 65 OF ARLINGTON HEIGHTS,
MAP BOOK 11, PAGES 20 AND 21, REC. S. B. CO., CALIF.

MARCH 1959 SCALE 1" = 200'

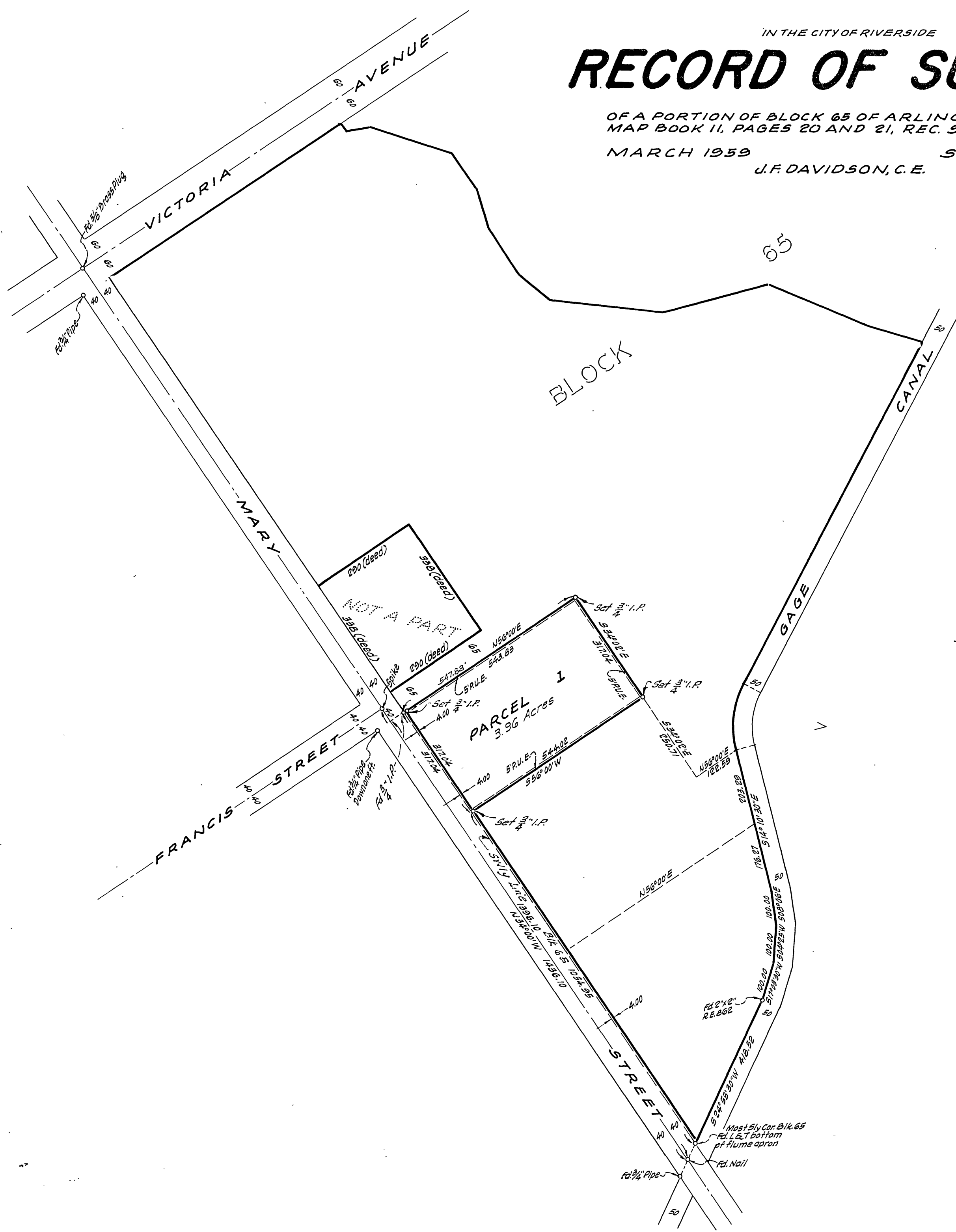
J. F. DAVIDSON, C. E.

Filed for Record at request of County Surveyor this 14 day of MAY, 1959, at 1:52 P.M. in Book 29 of Record of Survey at Page 79.

Fee \$ 5.00 No. _____

JACK A. ROSS County Recorder

By O. A. Wheat Deputy



Survey made at request of Nicholas E. Tavaglione



This Record of Survey map was approved by the City Council of the City of Riverside, California, on the March 10, 1959.
Virginia J. Strachan
City Clerk of the City of Riverside

ENGINEER'S CERTIFICATE

This map correctly represents a survey made by me or under my direction in conformance with the requirements of Chapter 15 of Division 3 of the Business and Professions Code at the request of NICHOLAS E. TAVAGLIONE in March, 1959.
J. F. Davidson
Registered Civil Engineer No. 062

ENGINEER'S NOTE

Bearings are based on the Southwesterly line of Block 65 as being N34°00'W as shown on deed to City of Riverside on file in Book 2427 Page 723 of Official Records, Riverside County, California.

COUNTY SURVEYOR'S CERTIFICATE

This map has been examined for conformance with the requirements of Chapter 15 of Division 3 of the Business and Professions Code this 6th day of May, 1959.
A. C. KEITH County Surveyor
By C. T. Worsley Deputy
F.B. 669-17
F.B. 629-44 (Ref.)