

IN THE CITY OF RIVERSIDE, CALIFORNIA

# RECORD OF SURVEY

of a portion of Lot 304 as shown by Corrected Map of Additions to Maps of Riverside Land and Irrigating Co. Map on file in Book 4 of Maps at page 75 Riv. Co. Records and a portion of Lot 6 of Evans Rio Rancho as shown by map on file in Book 10 of Maps at pages 52-54 Riv. Co. Records.

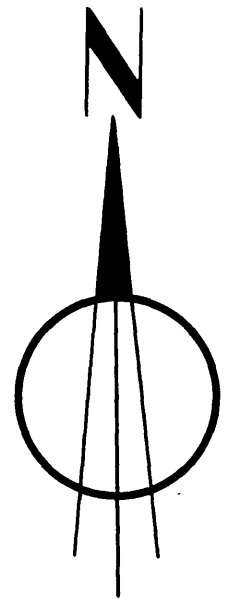
BY  
ALBERT A. WEBB ASSOCIATES  
January 1959

(Rec N86°26'30"W 457.00 M.B. 10/52)  
N.86°25'30"W 456.71

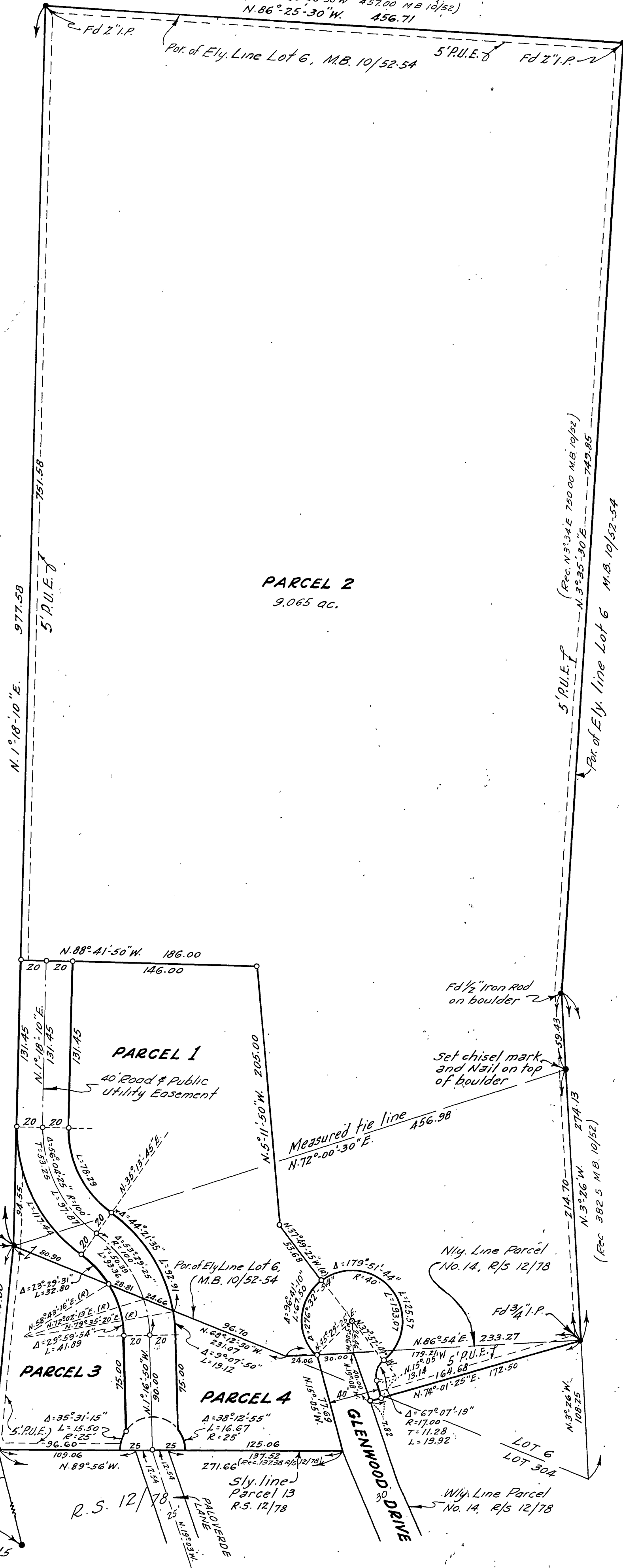
Filed for record at request of County Surveyor  
this 14th day of May 1959 at 4:00 P.M.  
in Book 29 of Record of Survey at page 37.  
Fee \$5.00 No.

JACK A. ROSS, County Recorder

by O. A. Wheat Deputy



Scale: - 1" = 60'



This map correctly represents a survey made by me or under my direction in conformance with the requirements of Chapter 15 of Division 3 of the Business and Professions Code at the request of Mrs. Peggy Cree in January of 1959.

Ernest N. Webb  
R.C.E. 9876

ENGINEER'S NOTES:-

Basis of Bearings is a portion of the Easterly boundary of Lot 6 of Evans Rio Rancho, taken as S.3°26'E, as same is shown on Map of Evans Rio Rancho on file in Book 10 of Maps at pages 52-54 thereof, records of Riverside County, Calif.

Found monuments as noted at all points shown thus •

Set 3/4" Iron Pipe lagged R.E. 9876 at all points shown thus ○ unless otherwise noted.

This Record of Survey, was approved by the City Council of the City of Riverside, California on the 24th day of March, 1959.

Virginia J. Stuebecker  
City Clerk of the City of Riverside,  
California

This map has been examined for conformance with the requirements of Chapter 15 of Division 3 of the Business and Professions Code this 11th day of May 1959.

A.C. KEITH, County Surveyor

by C. T. Worsley Deputy