

Continued on Sheet 2

Fd cross ties for center Sec. 32

IN THE CITY OF RIVERSIDE

# RECORD OF SURVEY

of portions of the W 1/2 of Section 32, T.2S., R.5W., S.B.B.&M., portions of Clifton Heights per M.B. 7 pg. 32, and portions of Blocks 27 and 28 of Tract No. 1 of the Riverview Addition per M.B. 6 pg. 38, Records of Riverside County, California

—BY—  
ALBERT A. WEBB ASSOCIATES  
CIVIL ENGINEERS  
JANUARY 1958

This map correctly represents a survey made by me or under my direction in conformance with the requirements of Chapter 15 of Division 3 of the Business and Professions Code at the request of the City of Riverside in November, 1957.

Ernest N. Webb  
R.C.E. 9876

### ENGINEER'S NOTES:

Basis of Bearings is the centerline of Arlington Avenue, taken as N. 89° 32' 10" E., as same is shown by map on File 10, Book 27 of Records of Survey of Riverside County, California, at pages 95 and 96 thereof.

Found monuments as noted at all points shown thus

Set 3/4" Iron Pipe tagged R.E. 9876 at all points shown thus unless otherwise noted.

Position computed but nothing set at all points shown thus

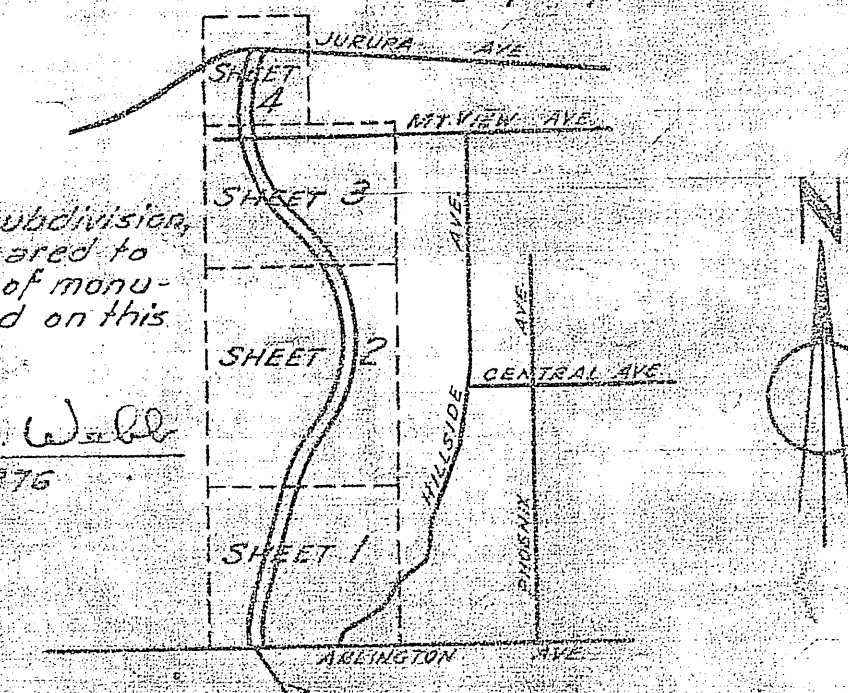
This map has been examined for conformance with the requirements of Chapter 15 of Division 3 of the Business and Professions Code this 13th day of May, 1958

A.C. Keith  
County Surveyor  
G.T. Woodley  
Deputy

### NOTE:-

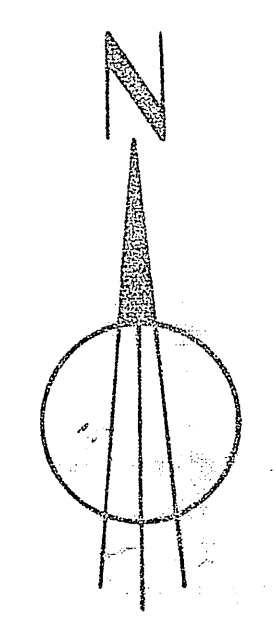
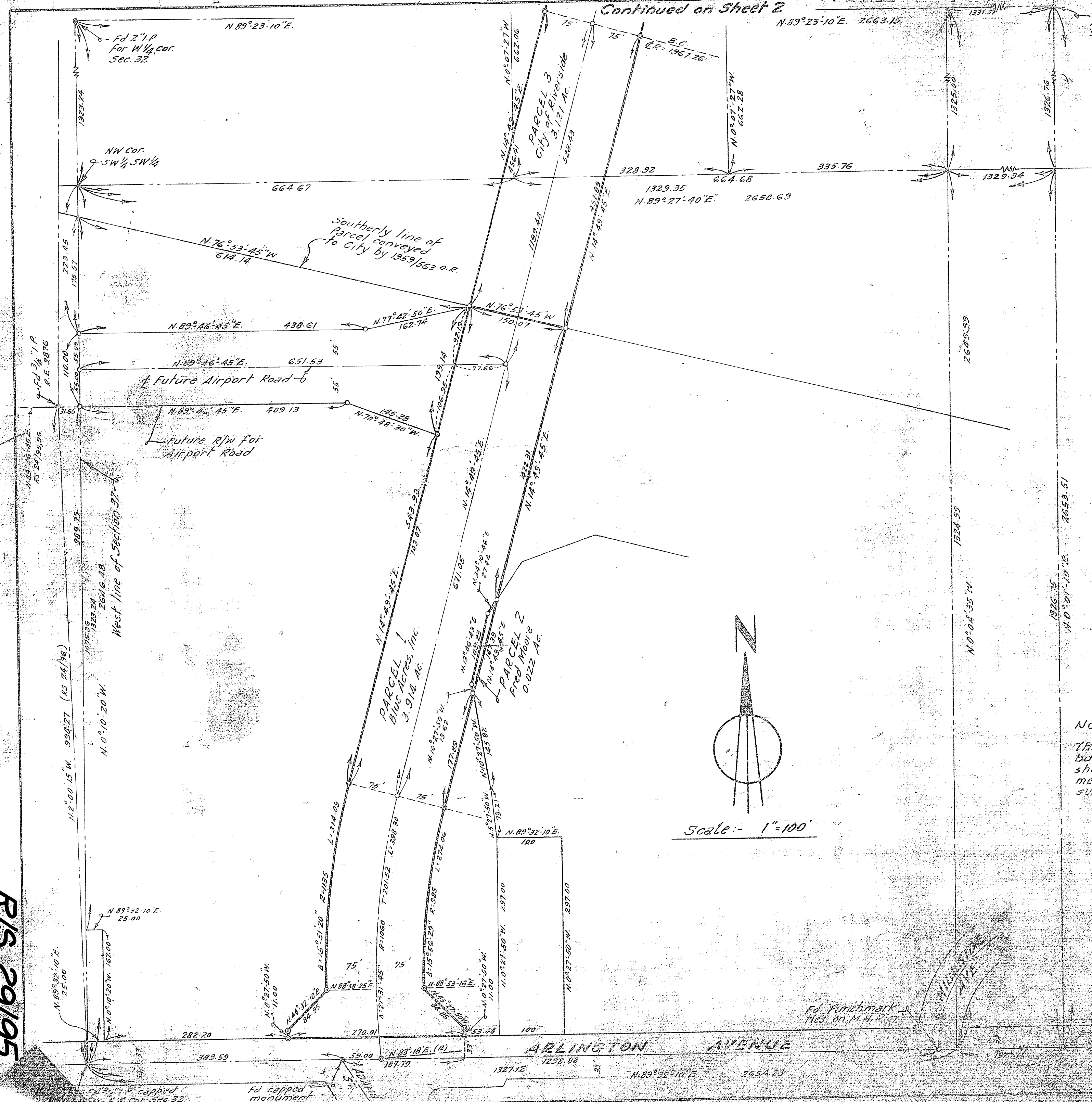
This map is not a subdivision, but has been prepared to show the position of monuments set or found on this survey.

Ernest N. Webb  
R.C.E. 9876



LOCATION DIAGRAM  
Scale: 1"=2000'

Filed for record this 20th day of January, 1958  
in Book 27 of Records of Survey of Riverside County, California at page 95 of same



Scale:- 1"=100'

R/S 29/195

R/S 29/195

County Recorder  
John K. ...