

304
R5465

IN THE CITY OF RIVERSIDE

RECORD OF SURVEY

OF A PORTION OF LOT 16 BLOCK 35 OF LANDS OF RIVERSIDE LAND AND IRRIGATING COMPANY, MAP BOOK 1
PAGE 70 RECORDS OF SAN BERNARDINO COUNTY, CALIFORNIA

DECEMBER 1958

SCALE: 1" = 100'

J.F. DAVIDSON, CIVIL ENGINEER

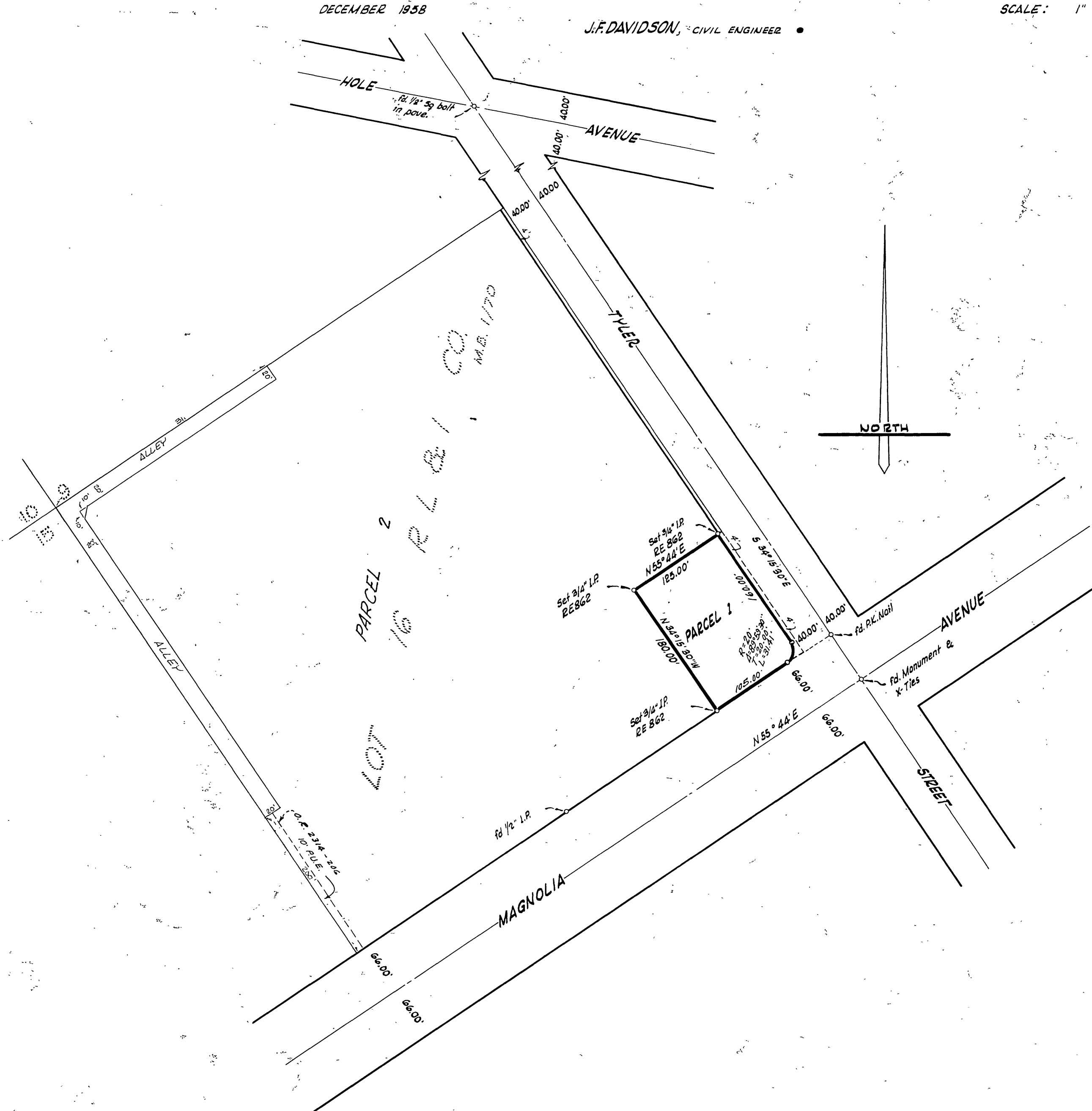
Filed for Record at request of County Surveyor this 5th day of June, 1959 at 3:00 PM in Book 30
of Record of Survey of Page 4

Fee \$5.00 No. _____

JACK A. ROSS County Recorder

By O.A. Mead Deputy

MADE AT THE REQUEST OF W² R. AUSTIN et. al.



This Record of Survey map was approved by the City Council of the City of Riverside, California on the 9th day of May, 1959

Virginia D. Strohecker
City Clerk of the City of Riverside, California
By Rachel D. Ladue, Deputy

ENGINEER'S CERTIFICATE

This map correctly represents a survey made by me or under my direction in conformance with the requirements of Chapter 15 of Division 3 of the Business and Professions Code of the request of W² R. Austin et. al. in December, 1958

J.F. Davidson
Registered Civil Engineer No. 862

ENGINEER'S NOTE

Bearings are based on the Nly Right of Way line of Magnolia Avenue being N 55° 44' E as shown on map of La Sierra Entrance Tract, R S. 5 Page 40, Records of Riverside County, California

COUNTY SURVEYOR'S CERTIFICATE

This map has been examined for conformance with the requirements of Chapter 15 of Division 3 of the Business and Professions Code this 4th day of June, 1959

A.C. KEITH County Surveyor

By G.T. Worsley Deputy