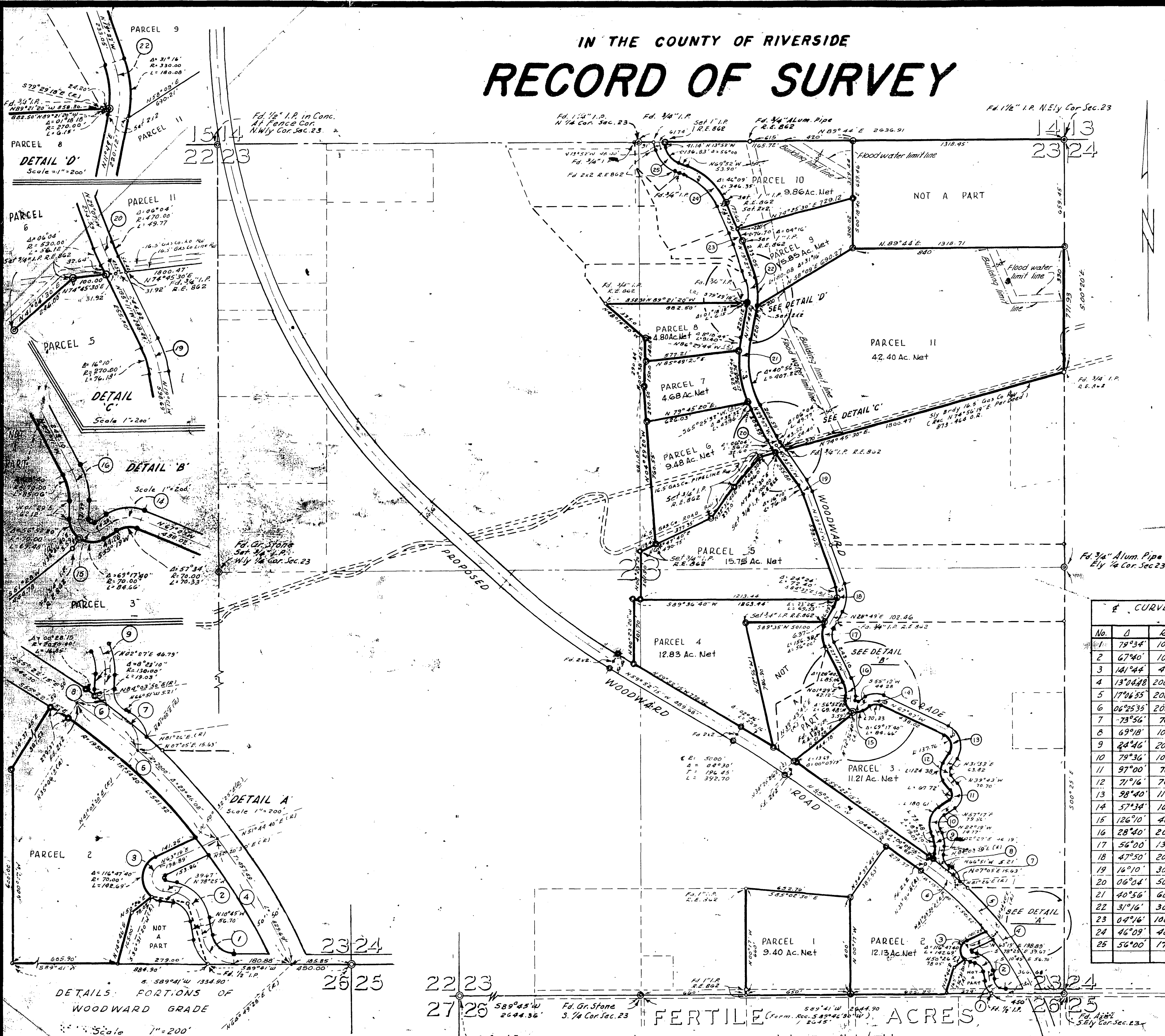


IN THE COUNTY OF RIVERSIDE  
**RECORD OF SURVEY**

Filed for Record at request of County Surveyor on the 17th day of August 1959 at 10:00 A.M. in Book 30 of Record of Survey of Page 35  
Fee \$5.00 No. 1000  
JACK A. ROSS County Recorder  
By O. A. [Signature] Deputy

OF A PORTION OF SECTION 23,  
T. 3 S., R. 5 W., S.B.B. & M.  
MAY 1959 SCALE 1"=400'  
J. F. DAVIDSON C. E.

SURVEY MADE AT THE  
REQUEST OF  
LELA H. PEET



**CURVE DATA**

No.	D	R	T	L
1	79°34'	100	83.27	138.87
2	67°40'	100	67.03	118.10
3	141°44'	40	115.30	38.95
4	13°04'48"	2000	229.29	456.58
5	17°46'55"	2000	300.95	597.44
6	06°25'35"	2000	112.27	224.32
7	73°56'	70	52.08	90.33
8	69°18'	100	69.11	120.95
9	24°46'	200	43.91	86.45
10	79°36'	100	83.32	138.93
11	97°00'	70	79.12	118.51
12	71°16'	70	50.18	87.07
13	98°40'	110	128.04	189.43
14	57°34'	100	58.94	100.47
15	126°10'	40	78.78	98.08
16	28°40'	200	51.10	100.06
17	56°00'	130	69.12	127.06
18	47°50'	200	88.70	166.97
19	16°10'	300	42.61	84.65
20	06°04'	500	26.50	52.54
21	40°56'	600	223.93	428.05
22	31°16'	300	83.95	163.71
23	04°16'	1000	37.25	74.47
24	46°09'	400	170.41	322.19
25	56°00'	170	90.39	166.16

**ENGINEER'S CERTIFICATE**  
This map correctly represents a survey made by me or under my direction in conformance with the requirements of Chapter 15 of the Business and Professions Code of the State of California as amended and the provisions of the laws of the State of California in March, 1959.  
J. F. Davidson  
Registered Civil Engineer No. 1000

**ENGINEER'S NOTE**  
Set 2x2 reewood stakes pointed white & flagged R.E. 862 of all points shown thus unless otherwise noted.  
Set 3/4" I.P. tagged R.E. 862 of all points shown thus unless otherwise noted.  
Bearings are based on the east line of the S.E. 1/4 of Sec. 23, T. 3 S., R. 5 W., S.B.B. & M. as being S. 00° 25' E. as shown by deed recorded July 24, 1956, in book 1947, of page 542 Official Records of Riverside Co. of California.

**COUNTY SURVEYOR'S CERTIFICATE**  
This map has been examined for conformance with the requirements of Chapter 15 of Division 3 of the Business and Professions Code of the State of California and is correct as shown on this day of August 1959.  
A.C. [Signature] County Surveyor  
By E. J. [Signature] Deputy

FERTILE (Form. Rec. 5.89°41'W 2644.90) ACRES  
M.B. 11/71